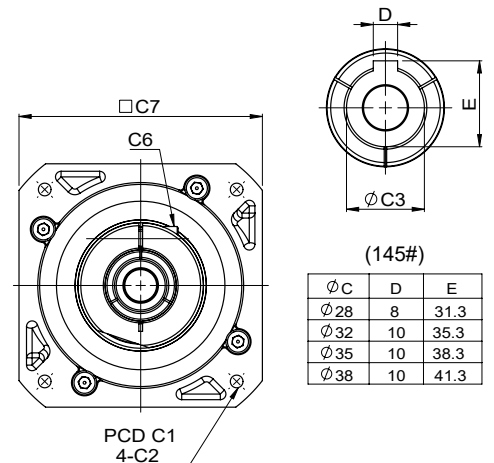
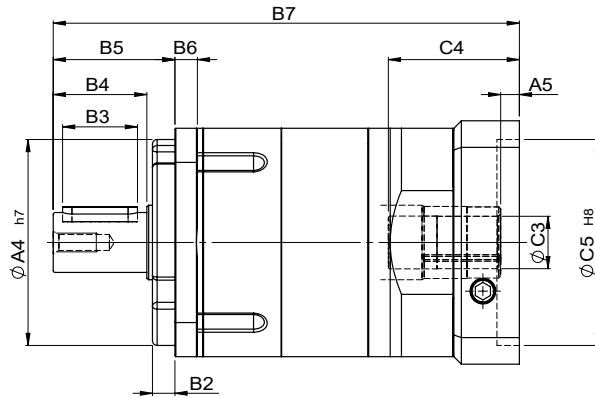
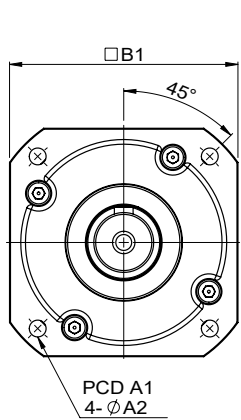
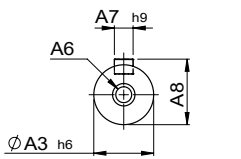


MODEL : FC

雙段 2-Stage

RATIO : 15, 20, 25, 30, 35, 40, 50, 70, 100



unit: mm

Model Code	50	70	90	120	145	
A	A1	50	70	100	130	165
	A2	4.5	5.5	6.8	9	11
	A3	13	16	22	32	40
	A4	35	50	80	110	130
	A5	4.5	6	9·23.5	10·20	11.5
	A6	M4 x P0.7	M5 x P0.8	M8 x P1.25	M10 x P1.5	M12 x P1.75
	A7	5	5	6	10	12
	A8	15	18	24.5	35	43
B	B1	51	69	90	122	145
	B2	5	7	10	12	12
	B3	15	20	30	40	65
	B4	20	28	36	50	74
	B5	26	36	48	65	92
	B6	5	7	9	12	14
	B7	121	148.8·156.8	190.5·205	249·259	310
C	C1	46·60·63	70·75·90	90·100·115·145	115·145·165	145·165·215
	C2	M3·M4·M5	M4·M5·M6	M5·M6·M8	M6·M8·M10	M8·M10·M12
	C3	8·11	11·14·16·19	19·24	24·28·32	28·32·35·38
	C4	32	33.5·41.5	51·65.5	70·80	83
	C5	30·40·50	50·60·70	70·80·95·110	95·110·130	110·130·180
	C6	M4 x P0.7	M5 x P0.8	M6 x P1.0	M8 x P1.25	M10 x P1.5
	C7	46·55	64·70·80	92·110·130	122·130·150	146·150·190



規格 Parameter	代號	單位 Unit	速比 Ratio	50	70	90	120	145
額定輸出扭矩 Rated Output Torque (Nominal output torque)	T_{2N}	Nm	15	16	50	135	276	496
			20	14	45	120	245	432
			25	15	42	118	230	423
			30	16	50	135	275	496
			35	12	40	114	215	393
			40	14	45	120	245	432
			50	15	42	118	230	423
			70	12	40	114	215	393
			100	11	37	108	204	375
最大加速扭矩 Max. Acceleration Torque	T_{2B}	Nm	15 ~ 100	1.8 倍額定輸出扭矩 1.8 Times of Rated Output Torque				
最大輸出扭矩 Max. Output Torque 急停扭矩 Emergency Stop Torque	T_{2NOT}	Nm	15 ~ 100	3 倍額定輸出力矩 3 Times of Rated Output Torque				
額定輸入轉速 Rated Input Speed	n_{1N}	rpm	15 ~ 100	3,000	3,000	3,000	3,000	3,000
最大輸入轉速 Max. Input Speed	n_{1B}	rpm	15 ~ 100	5,000	5,000	5,000	5,000	5,000
背隙 Backlash		arcmin	15 ~ 100	≤ 10	≤ 10	≤ 10	≤ 10	≤ 10
扭轉剛性 Torsional Rigidity		Nm/arcmin	15 ~ 100	2.5	5	12	26	58
容許徑向力 Max. Radial Force	F_{2rB}	N	15 ~ 100	750	1,196	2,850	6,100	8,600
容許軸向力 Max. Axial Force	F_{2aB}	N	15 ~ 100	375	598	1,425	3,050	4,300
使用壽命 Service Life	L_H	hr	15 ~ 100	S5 周期運轉 : >30,000 (S1 連續運轉 : >15,000 hrs) S5 Cycle Operation: >30,000 (S1 Continuous Operation: >15,000 hrs)				
效率 Efficiency	η	%	15 ~ 100	≥ 94%				
使用溫度 Operating Temperature		°C	15 ~ 100	- 25° C ~ + 90° C				
潤滑 Lubrication			15 ~ 100	全合成潤滑油脂 Synthetic Grease				
防護等級 Protection Class			15 ~ 100	IP65				
安裝方向 Mounting Position			15 ~ 100	任意方向 Any				
噪音值 Noise Level		dB	15 ~ 100	≤ 60	≤ 62	≤ 64	≤ 66	≤ 68
重量 Weight ±3%		Kg	15 ~ 100	0.86	1.85	3.9	9.35	15.725

■ 轉動慣量 Mass Moments of Inertia (kg.cm²)

Ratio	50	70	90	120	145
15	0.03	0.13	0.41	2.54	6.50
20	0.03	0.14	0.42	2.55	6.80
25	0.03	0.13	0.41	2.54	6.50
30	0.03	0.16	0.51	3.02	8.31
35	0.03	0.13	0.35	2.40	6.44
40	0.03	0.14	0.42	2.55	6.80
50	0.03	0.13	0.41	2.54	6.50
70	0.03	0.13	0.35	2.40	6.44
100	0.03	0.13	0.35	2.39	6.37