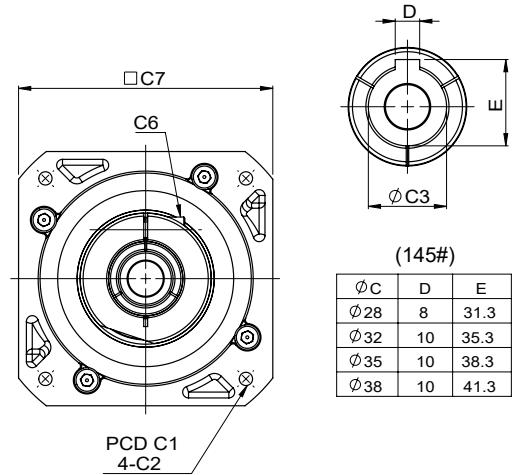
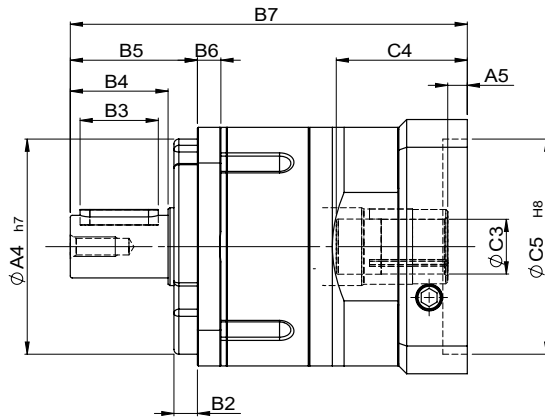
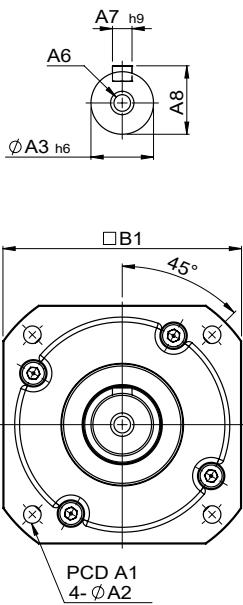


## MODEL : FC

單段 1-Stage

RATIO : 3, 4, 5, 7, 10

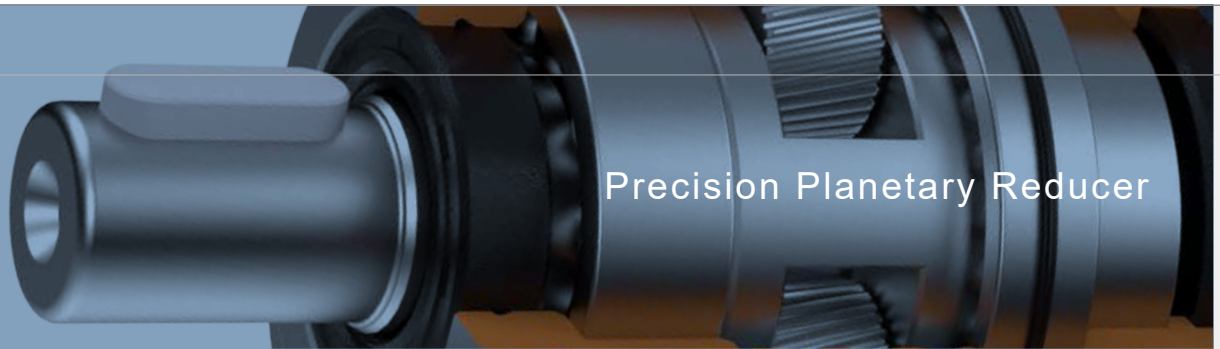


(145#)

Ø C	D	E
Ø28	8	31.3
Ø32	10	35.3
Ø35	10	38.3
Ø38	10	41.3

unit: mm

Model Code	50	70	90	120	145	
<b>A</b>	A1	50	70	100	130	165
	A2	4.5	5.5	6.8	9	11
	A3	13	16	22	32	40
	A4	35	50	80	110	130
	A5	4.5	6	9 · 23.5	10 · 20	11.5
	A6	M4 x P0.7	M5 x P0.8	M8 x P1.25	M10 x P1.5	M12 x P1.75
	A7	5	5	6	10	12
	A8	15	18	24.5	35	43
<b>B</b>	B1	51	69	90	122	145
	B2	5	7	10	12	12
	B3	15	20	30	40	65
	B4	20	28	36	50	74
	B5	26	36	48	65	92
	B6	5	7	9	12	14
	B7	95	115 · 123	155.5 · 170	203 · 213	253.5
<b>C</b>	C1	46 · 60 · 63	70 · 75 · 90	90 · 100 · 115 · 145	115 · 145 · 165	145 · 165 · 165
	C2	M3 · M4 · M5	M4 · M5 · M6	M5 · M6 · M8	M6 · M8 · M10	M8 · M10 · M12
	C3	8 · 11	11 · 14 · 16 · 19	19 · 24	24 · 28 · 32	28 · 32 · 35 · 38
	C4	32	33.5 · 41.5	51 · 65.5	67 · 77	83
	C5	30 · 40 · 50	50 · 60 · 70	70 · 80 · 95 · 110	95 · 110 · 130	110 · 130 · 180
	C6	M4 x P0.7	M5 x P0.8	M6 x P1.0	M8 x P1.25	M10 x P1.5
	C7	46 · 55	64 · 70 · 80	92 · 110 · 130	122 · 130 · 150	146 · 150 · 190



規格 Parameter	代號	單位 Unit	速比 Ratio	50	70	90	120	145
額定輸出扭矩 Rated Output Torque (Nominal output torque)	$T_{2N}$	Nm	3	16	50	135	276	496
			4	14	45	120	245	432
			5	15	42	118	230	423
			7	12	40	114	215	393
			10	11	37	108	204	375
最大加速扭矩 Max. Acceleration Torque	$T_{2B}$	Nm	3 ~ 10	1.8 倍額定輸出扭矩 1.8 Times of Rated Output Torque				
最大輸出扭矩 Max. Output Torque 急停扭矩 Emergency Stop Torque	$T_{2NOT}$	Nm	3 ~ 10	3 倍額定輸出力矩 3 Times of Rated Output Torque				
額定輸入轉速 Rated Input Speed	$n_{1N}$	rpm	3 ~ 10	3,000	3,000	3,000	3,000	3,000
最大輸入轉速 Max. Input Speed	$n_{1B}$	rpm	3 ~ 10	5,000	5,000	5,000	5,000	5,000
背隙 Backlash		arcmin	3 ~ 10	≤ 8	≤ 8	≤ 8	≤ 8	≤ 8
扭轉剛性 Torsional Rigidity		Nm/arcmin	3 ~ 10	2.5	5	12	26	58
容許徑向力 Max. Radial Force	$F_{2rB}$	N	3 ~ 10	750	1,196	2,850	6,100	8,600
容許軸向力 Max. Axial Force	$F_{2aB}$	N	3 ~ 10	375	598	1,425	3,050	4,300
使用壽命 Service Life	$L_H$	hr	3 ~ 10	S5 周期運轉 : >30,000 (S1 連續運轉 : >15,000 hrs) S5 Cycle Operation: >30,000 (S1 Continuous Operation: >15,000 hrs)				
效率 Efficiency	$\eta$	%	3 ~ 10	≥ 97%				
使用溫度 Operating Temperature		°C	3 ~ 10	- 25° C ~ + 90° C				
潤滑 Lubrication			3 ~ 10	全合成潤滑油脂 Synthetic Grease				
防護等級 Protection Class			3 ~ 10	IP65				
安裝方向 Mounting Position			3 ~ 10	任意方向 Any				
噪音值 Noise Level		dB	3 ~ 10	≤ 58	≤ 60	≤ 62	≤ 65	≤ 66
重量 Weight ±3%		Kg	3 ~ 10	0.53	1.12	2.6	6.2	9.83

■ 轉動慣量 Mass Moments of Inertia (kg.cm<sup>2</sup>)

Ratio	50	70	90	120	145
3	0.03	0.16	0.51	3.02	8.31
4	0.03	0.14	0.42	2.55	6.80
5	0.03	0.13	0.41	2.54	6.50
7	0.03	0.13	0.35	2.40	6.44
10	0.03	0.13	0.35	2.39	6.37