

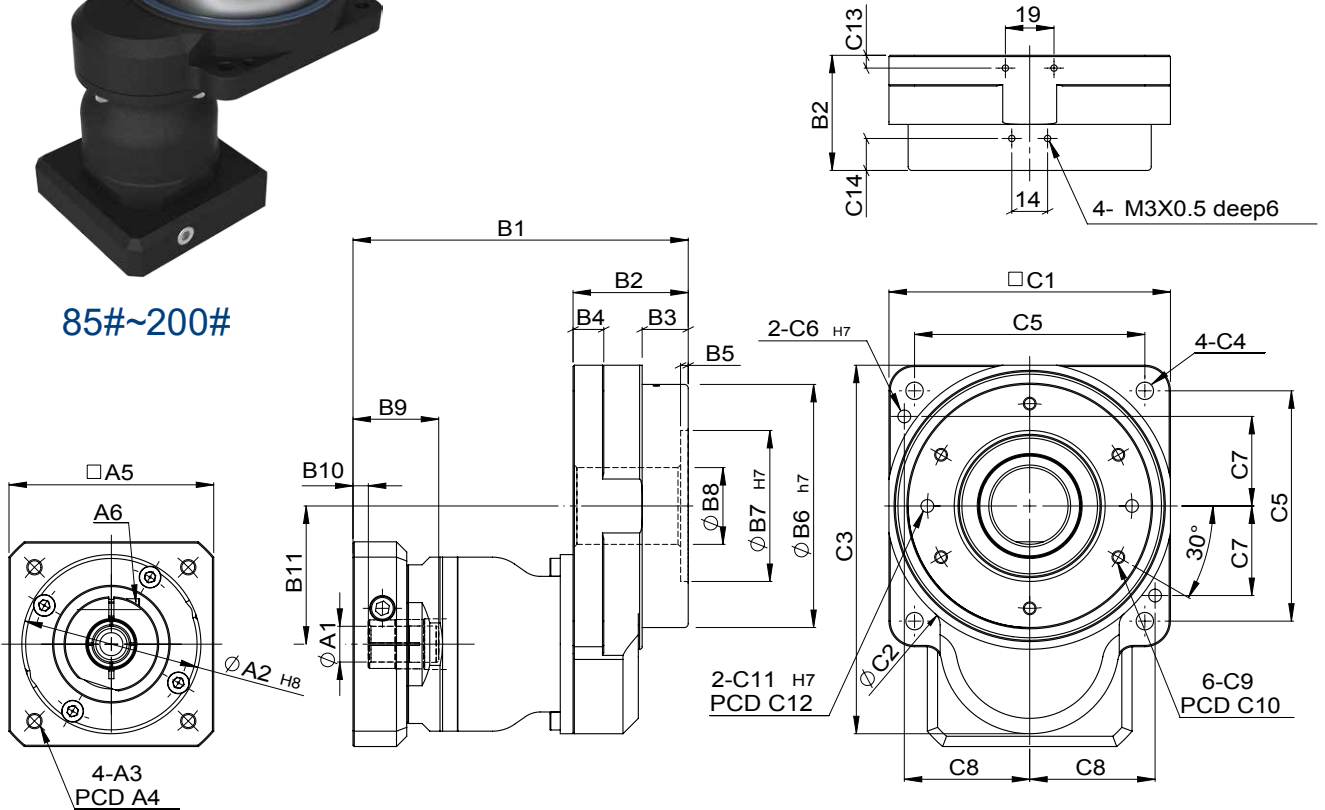
MODEL : GT-B

RATIO : 25.50.100 (雙段 2-Stage)

GT



85#~200#



unit: mm

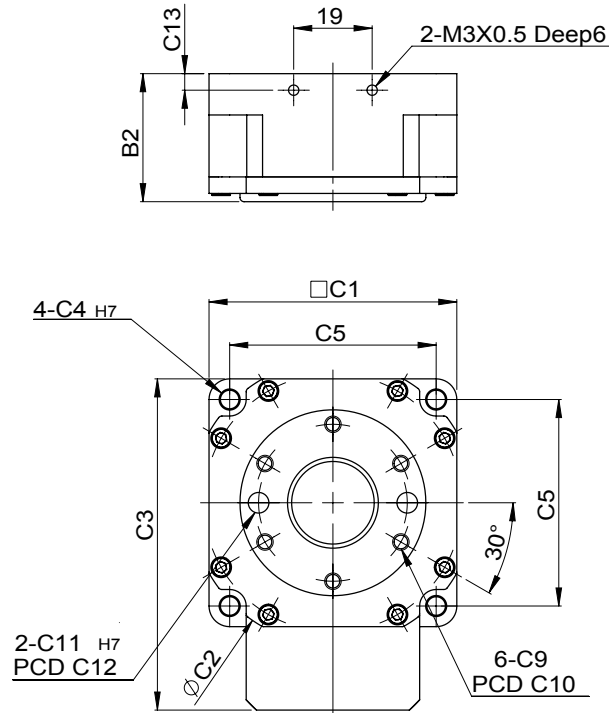
| Model Code | 60 | 85 | 110 | 135 | 200 | |
|------------|-----|--------------|--------------|--------------|--------------|--------------|
| A | A1 | 8 | 14 | 14 | 19 | |
| | A2 | 30 · 40 · 50 | 30 · 40 · 50 | 50 · 60 · 70 | 50 · 60 · 70 | 50 · 60 · 70 |
| | A3 | M3 · M4 · M5 | M3 · M4 · M5 | M4 · M5 · M6 | M4 · M5 · M6 | M4 · M5 · M6 |
| | A4 | 46 · 63 · 60 | 46 · 63 · 60 | 70 · 75 · 90 | 70 · 75 · 90 | 70 · 75 · 90 |
| | A5 | 46 · 55 | 46 · 55 | 64 · 70 · 80 | 64 · 70 · 80 | 64 · 70 · 80 |
| | A6 | M4 x 0.7 | M4 x 0.7 | M5 x 0.8 | M5 x 0.8 | M5 x 0.8 |
| B | B1 | 103 | 116.5 | 131 | 141 | 166.5 |
| | B2 | 31 | 44.5 | 45 | 55 | 70 |
| | B3 | 6 | 21.5 | 18 | 22 | 30 |
| | B4 | 10 | 10 | 12 | 15 | 20 |
| | B5 | 2 | 3 | 3 | 3 | 4 |
| | B6 | 45 | 70 | 95 | 115 | 170 |
| | B7 | - | 52 | 59 | 92 | 120 |
| | B8 | 20 | 22 | 30 | 50 | 75 |
| | B9 | 32 | 32 | 33.5 | 33.5 | 45.5 |
| | B10 | 4.5 | 5 | 6 | 6 | 10 |
| | B11 | 29.2 | 41.6 | 54 | 66.6 | 92.5 |
| C | C1 | 60 | 85 | 110 | 135 | 200 |
| | C2 | 69 | 87 | 112 | 138 | 202 |
| | C3 | 80.2 | 110.1 | 144 | 169.1 | 242.5 |
| | C4 | 4.5 | 5.5 | 6.8 | 9 | 11 |
| | C5 | 50 | 70 | 90 | 110 | 170 |
| | C6 | - | 4 | 5 | 5 | 8 |
| | C7 | - | 28 | 35 | 45 | 68 |
| | C8 | - | 38 | 49 | 60 | 85 |
| | C9 | M4 x 0.7 | M4 x 0.7 | M5 x 0.8 | M5 x 0.8 | M6 x 1.0 |
| | C10 | 38 | 62.5 | 80 | 104 | 155 |
| | C11 | 5 deep6 | 5 deep6 | 5 deep6 | 5 deep5 | 8 deep8 |
| | C12 | 36 | 62.5 | 80 | 104 | 155 |
| | C13 | 4 | 4 | 5 | 5.5 | 9 |
| | C14 | - | 7.5 | 12.5 | 17 | 24 |

Characteristic of GT-B 2-Stage Series

GT-B 雙段系列產品特性



60#



GT-B 雙段減速機 2-Stage

| 特性 Parameter | Code | Unit | Ratio | 60B | 85B | 110B | 135B | 200B |
|---|------------|-------------------|--------|--|-----------------------|-----------------------|-----------------------|------------------------|
| 輸出平台支撐軸 / Output Table Supporting Bearing | | | 25~100 | 深溝滾珠軸承 / Ball Bearing | | | | |
| 額定輸出扭矩 / Rated Output Torque (Nominal output torque) | T_{2N} | Nm | 25 | 5 | 18 | 33 | 43 | 142 |
| | | | 50 | 4 | 14 | 26 | 34 | 112 |
| | | | 100 | 4 | 14 | 26 | 34 | 112 |
| 最大加速扭矩 / Max. Acceleration Torque | T_{2B} | Nm | 25~100 | 1.5 倍額定輸出扭矩 1.5 Times of Rated Output Torque | | | | |
| 最大輸出扭矩 / Max. Output Torque 急停扭矩 / Emergency Stop Torque | T_{2NOT} | Nm | 25~100 | 2 倍額定輸出扭矩 2 Times of Rated Output Torque | | | | |
| 慣性慣量 / Inertia Moment | | kg.m ² | 25~100 | 777×10^{-7} | 1268×10^{-6} | 1562×10^{-6} | 2918×10^{-6} | 29072×10^{-6} |
| 出力容許轉速 / Output Permissible Speed | | rpm | 25~100 | 300 | 300 | 300 | 300 | 300 |
| 回程間隙 / Torsional Backlash | | arcmin | 25~100 | ≤ 2 | ≤ 2 | ≤ 2 | ≤ 2 | ≤ 2 |
| 動態齒輪差 / Lost Motion | | arcmin | 25~100 | 3(0.05°) | | | | |
| 重覆定位精度 / Repetitive Positioning Accuracy | | arcsec | 25~100 | ±15(0.0042°) | | | | |
| 容許載重 / Permissible Thrust Load | | N | 25~100 | 350 | 600 | 800 | 1450 | 2500 |
| 容許彎矩負載 / Permissible Moment Load | | Nm | 25~100 | 7 | 12 | 16 | 30 | 50 |
| 工作台面偏擺 / Runout of Output Table Surface | | mm | 25~100 | 0.01 | 0.01 | 0.015 | 0.015 | 0.02 |
| 工作台面同心度 / Runout of Output Table Inner / Outer Diameter | | mm | 25~100 | 0.01 | 0.01 | 0.015 | 0.015 | 0.02 |
| 工作台面平行度 / Parallelism of Output Table | | mm | 25~100 | 0.02 | 0.02 | 0.025 | 0.025 | 0.03 |
| 重量 / Weight | | kg | 25~100 | 1.1 | 1.95 | 3.76 | 4.92 | 11.8 |