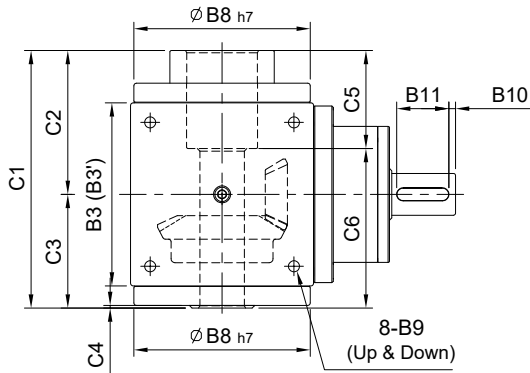


ST-DP series

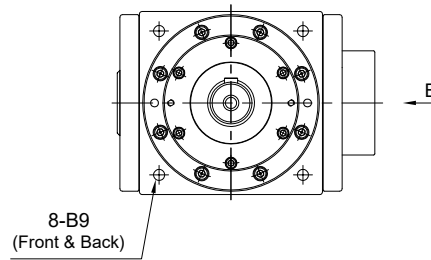
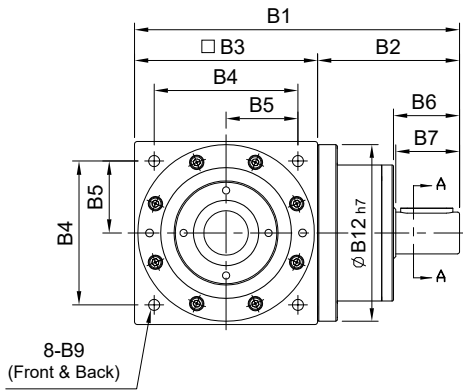
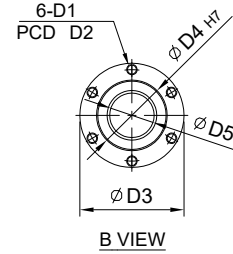
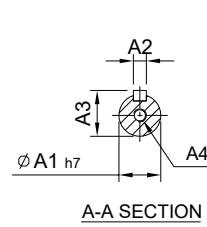
RATIO : 2.3.4.5 (單段 1-Stage)

單入力軸心 - 螺桿式

Single Input Shaft - Ball Screw



R 軸
Shaft Direction



unit: mm

| Model Code | 75 | 90 | 110 | 140 | 170 | 210 | 240 | |
|-----------------|---------|-----------|------------|------------|------------|-------------|-------------|------------|
| A | A1 | 16 | 18 | 22 | 32 | 40 | 55 | |
| | A2 | 5 | 6 | 6 | 10 | 12 | 16 | |
| | A3 | 18 | 20.5 | 24.5 | 35 | 43 | 54 | |
| | A4 | M5 x P0.8 | M8 x P1.25 | M8 x P1.25 | M10 x P1.5 | M12 x P1.75 | M12 x P1.75 | M16 x P2.0 |
| B | B1 | 143 | 169 | 207 | 250 | 300 | 375 | |
| | B2 | 68 | 79 | 97 | 110 | 130 | 165 | |
| | B3(B3') | 75(74) | 90 | 110 | 140 | 170(168) | 210 | |
| | B4 | 60 | 72 | 88 | 110 | 134 | 170 | |
| | B5 | 30 | 36 | 44 | 55 | 67 | 85 | |
| | B6 | 32 | 38 | 43 | 53.5 | 64 | 77 | |
| | B7 | 30 | 35 | 40 | 50 | 60 | 75 | |
| | B8 | 73 | 88 | 106 | 135 | 164 | 205 | |
| | B9 | M6 x P1.0 | M6 x P1.0 | M8 x P1.25 | M10 x P1.5 | M12 x P1.75 | M16 x P2.0 | M16 x P2.0 |
| | B10 | 2.5 | 5 | 5 | 5 | 5 | 5 | |
| B11 | 25 | 25 | 30 | 40 | 50 | 65 | | |
| B12 | 73 | 88 | 106 | 135 | 164 | 205 | | |
| C | C1 | 106 | 127 | 156 | 197 | 223 | 309 | |
| | C2 | 57 | 68 | 84 | 109 | 121 | 162.5 | |
| | C3 | 49 | 59 | 72 | 88 | 102 | 146.5 | |
| | C4 | 1.25 | 2 | 2 | 2 | 2.25 | 2.5 | |
| | C5 | 33 | 44 | 55 | 75 | 72 | 92 | |
| | C6 | 73 | 83 | 101 | 122 | 153 | 217 | |
| D | D1 | M4 x P0.7 | M5 x P0.8 | M5 x P0.8 | M8 x P1.25 | M10 x P1.5 | M10 x P1.5 | |
| | D2 | 36 | 40 | 45 | 70 | 77 | 84 | |
| | D3 | 41.7 | 46.7 | 57.7 | 79.7 | 89.7 | 99.7 | |
| | D4 | 26 | 30 | 36 | 54 | 58 | 64 | |
| | D5 | 15 | 18 | 22 | 34 | 38 | 42 | |
| Weight ±3% (kg) | 2.8 | 4.9 | 8.59 | 15.5 | 25 | 53 | | |