

JT series

JT

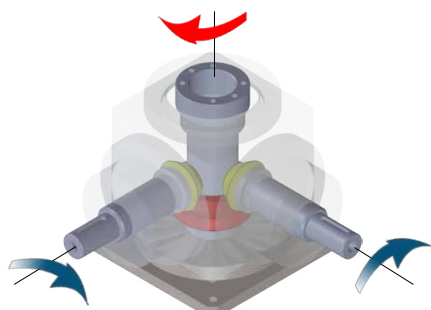
Indication of Model Numbers

機種型號表示

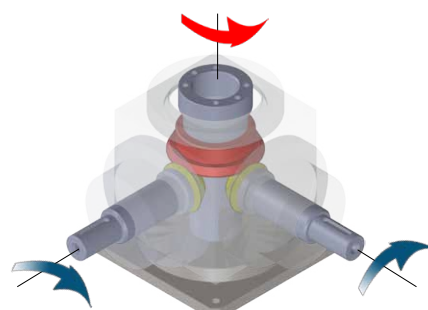
JT	90	R	P		T	10	L	P0
減速機機型 Type	型號 Model	入力表示 Input	出力表示 Output	樣式 Shaft	軸承形式 Bearing	速比 Ratio	軸向 Shaft Direction	背隙等級 Backlash Class
JT	90	F: 入力法蘭 Input Flange R: 減速機 Reducer D: 入力軸心 Input Shaft	P: 滾珠螺桿式 Ball Screw V: 雙出力軸心 Double Output Shaft	1: 1 出軸 1 Shaft 2: 2 出軸 2 Shaft 3: 3 出軸 3 Shaft	T: 滾錐軸承 Taper Bearing	單段 1-Stage 2 雙段 2-Stage 10	L: 左軸 Left Shaft R: 右軸 Right Shaft ----- 出力形式 P 可以選擇軸向 Shaft direction is optional for output type P.	P0 P1 P2

Rotating Direction

旋轉方向說明



L 軸向
Shaft Direction
(標準 Standard)



R 軸向
Shaft Direction
(可選 Optional)

Note:
本公司出廠標準品使用「標準軸向」，R 軸向請於訂單上註明。
Standard product is L shaft direction, R shaft direction is optional.

Selection of Type

產品樣式選擇

入力形式 Input Type

F 入力法蘭
Input Flange

R 減速機
Reducer

D 入力軸心
Input Shaft

V
雙出力軸心
Double
Output Shaft



FV



RV



DV

P1
滾珠螺桿式
1 出軸
Ball Screw
1 Shaft



FP1



RP1



DP1

P2
滾珠螺桿式
2 出軸
Ball Screw
2 Shaft



FP2



RP2



DP2

P3
滾珠螺桿式
3 出軸
Ball Screw
3 Shaft



FP3



RP3



DP3

出力形式 Output Type

出力形式 P 可以選擇軸向。 Shaft direction is optional for output type P.

Characteristic of JT Series

JT 系列產品特性

JT

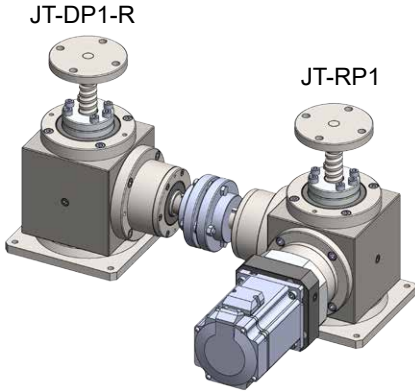
規格 Parameter	Code	Unit	Ratio	90
額定輸出扭矩 / Rated Output Torque (Nominal output torque)	T_{2N}	Nm	2、10	68
最大加速扭矩 / Max. Acceleration Torque	T_{2B}	Nm	2、10	1.5 倍額定輸出扭矩 1.5 Times of Rated Output Torque
最大輸出扭矩 / Max. Output Torque 急停扭矩 / Emergency Stop Torque	T_{2NOT}	Nm	2、10	2 倍額定輸出扭矩 2 Times of Rated Output Torque
額定輸入轉速 / Rated Input Speed	n_{1N}	rpm	2、10	3,000
最大輸入轉速 / Max. Input Speed	n_{1B}	rpm	2、10	6,000
背隙 / Backlash	J_t	arcmin	P0	≤ 3
			P1	≤ 6
			P2	≤ 9
容許徑向力 / Max. Radial Force 滾錐軸承 Taper Bearing	F_{2rB}	N	2、10	3,200
容許軸向力 / Max. Axial Force 滾錐軸承 Taper Bearing	F_{2aB}	N	2、10	1,600
使用壽命 / Service Life	L_H	hr	2、10	S5 周期運轉 : >30,000 (S1 連續運轉 : >15,000 hrs) S5 Cycle Operation: >30,000 (S1 Continuous Operation: >15,000 hrs)
效 率 / Efficiency	η	%	2、10	$\geq 96\%$
使用溫度 / Operating Temperature		°C	2、10	-30°C ~ +100°C
潤 滑 / Lubrication			2、10	全合成潤滑油 Synthetic Oil
噪 音 值 / Noise Level		dB	2、10	≤ 74

Applications

減速機應用範例

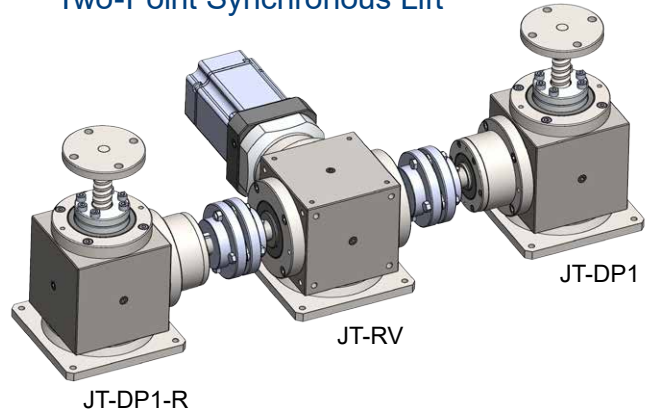
○兩點同步升降

Two-Point Synchronous Lift



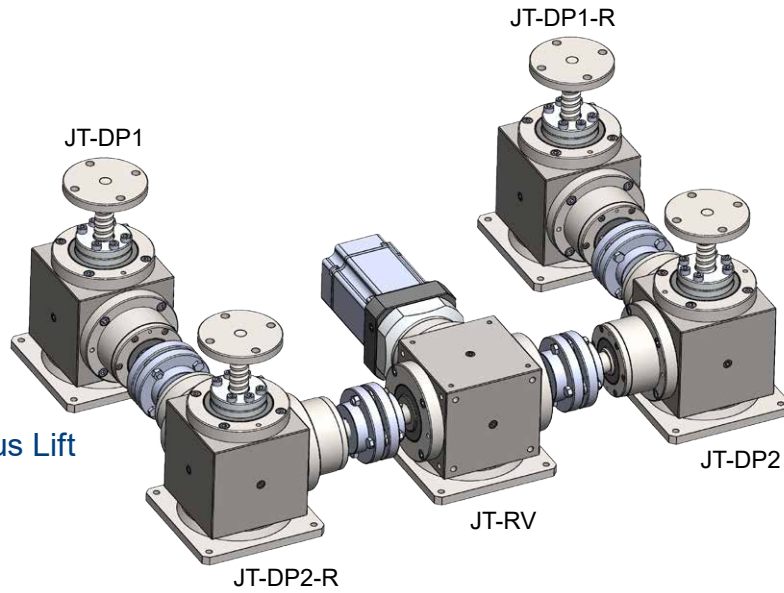
○兩點同步升降

Two-Point Synchronous Lift



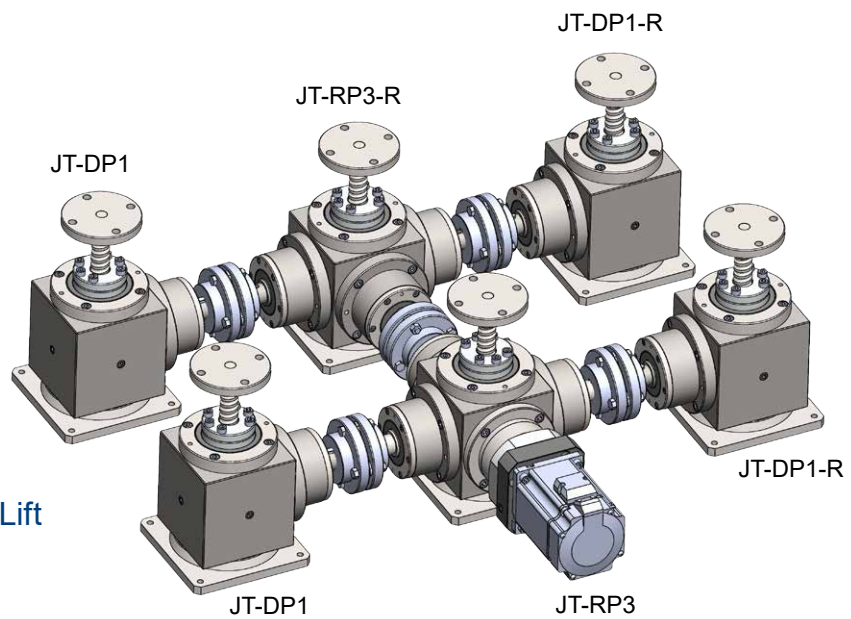
○四點同步升降

Four-Point Synchronous Lift



○六點同步升降

Six-Point Synchronous Lift

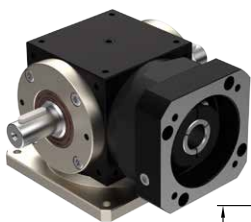


JT

MODEL : JT90

RATIO : 2 (單段 1-Stage)

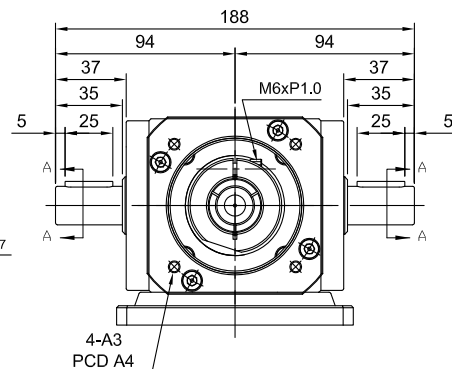
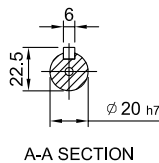
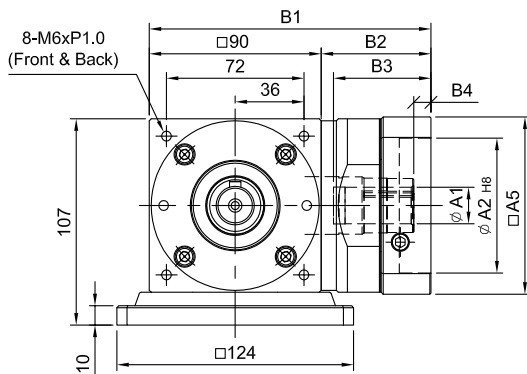
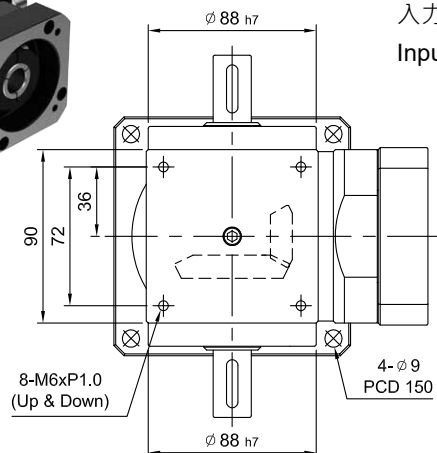
JT



JT-FV

入力法蘭 - 雙出力軸心

Input Flange - Double Output Shaft



unit:mm

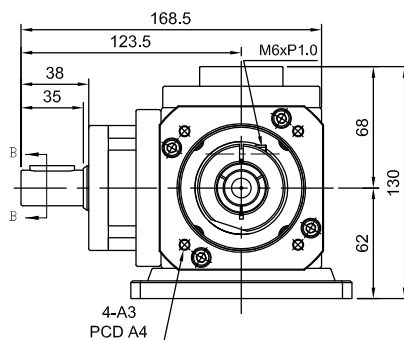
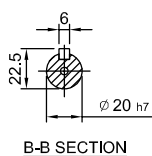
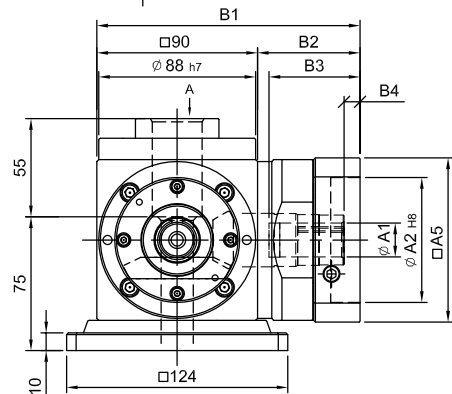
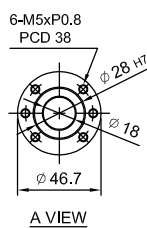
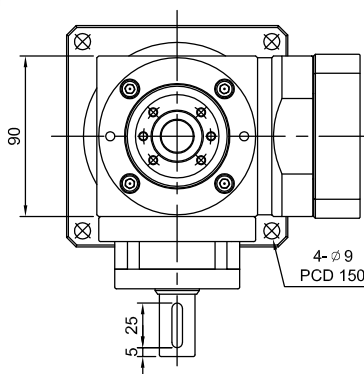
Model Code	90
A1	16 · 19 · 22 · 24
A2	70 · 80 · 95 · 110
A3	M5 · M6 · M8
A4	90 · 100 · 115 · 145
A5	92 · 110 · 130
B1	148 · 162
B2	58 · 72
B3	51 · 65.5
B4	9 · 23.5
Weight ±3% (kg)	5.4



JT-FP1

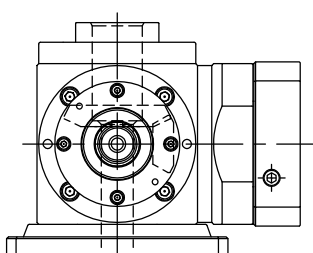
入力法蘭 - 滾珠螺桿式 - 1 出軸

Input Flange - Ball Screw - 1 Shaft



unit:mm

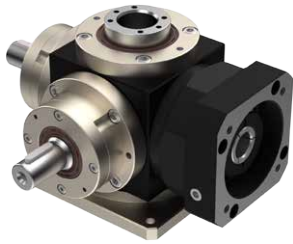
Model Code	90
A1	16 · 19 · 22 · 24
A2	70 · 80 · 95 · 110
A3	M5 · M6 · M8
A4	90 · 100 · 115 · 145
A5	92 · 110 · 130
B1	148 · 162
B2	58 · 72
B3	51 · 65.5
B4	9 · 23.5
Weight ±3% (kg)	7.1



R 軸
Shaft Direction

MODEL : JT90

RATIO : 2 (單段 1-Stage)



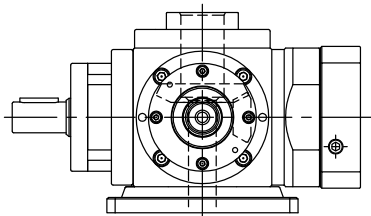
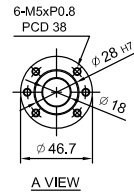
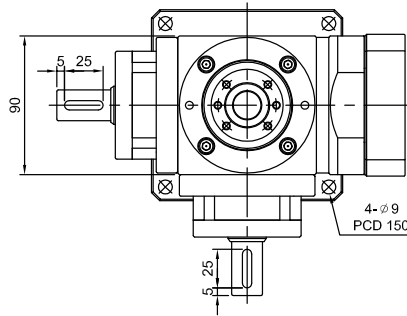
JT-FP2

入力法蘭 - 滾珠螺桿式 - 2 出軸

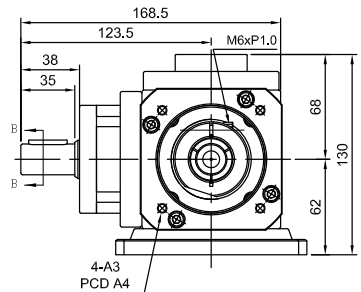
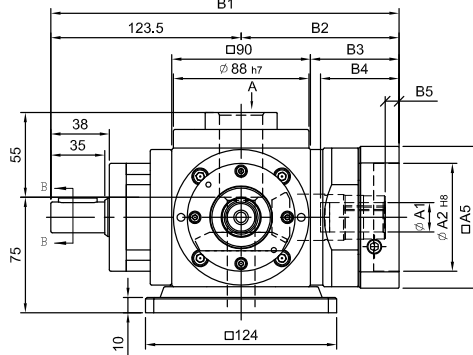
Input Flange - Ball Screw - 2 Shout

unit:mm

Model Code	90
A1	16 · 19 · 22 · 24
A2	70 · 80 · 95 · 110
A3	M5 · M6 · M8
A4	90 · 100 · 115 · 145
A5	92 · 110 · 130
B1	226 · 240.5
B2	102.5 · 117
B3	58 · 72
B4	51 · 65.5
B5	9 · 23.5
Weight ±3% (kg)	8.5



R 軸
Shaft Direction



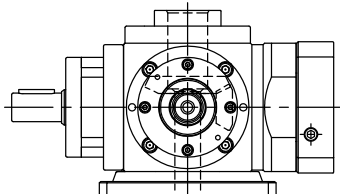
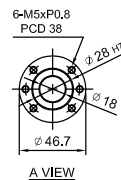
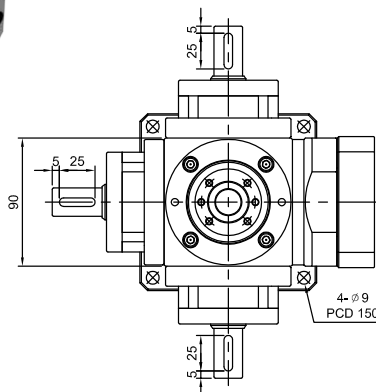
JT-FP3

入力法蘭 - 滾珠螺桿式 - 3 出軸

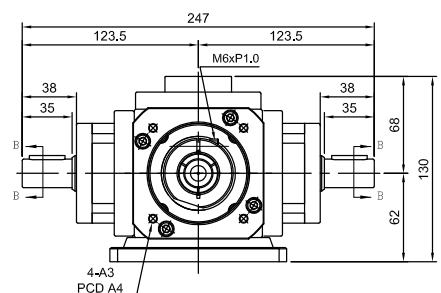
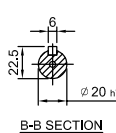
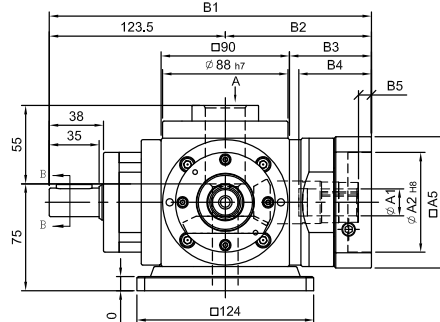
Input Flange - Ball Screw - 3 Shout

unit:mm

Model Code	90
A1	16 · 19 · 22 · 24
A2	70 · 80 · 95 · 110
A3	M5 · M6 · M8
A4	90 · 100 · 115 · 145
A5	92 · 110 · 130
B1	226 · 240.5
B2	102.5 · 117
B3	58 · 72
B4	51 · 65.5
B5	9 · 23.5
Weight ±3% (kg)	9.9



R 軸
Shaft Direction



MODEL : JT90

RATIO : 10 (雙段 2-Stage)

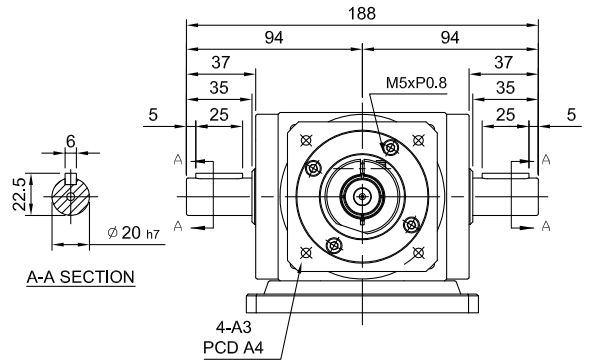
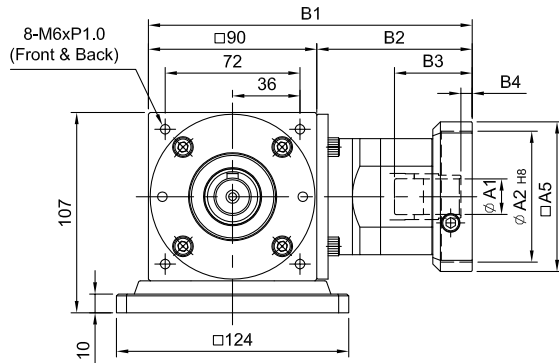
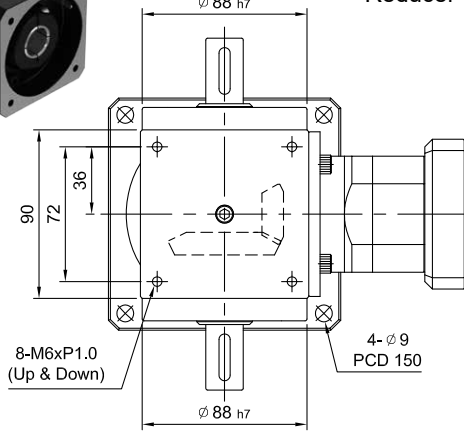
JT



JT-RV

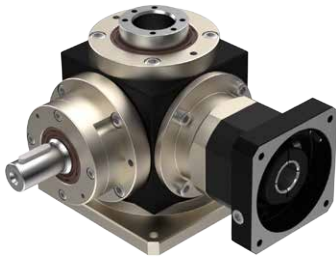
減速機 - 雙出力軸心

Reducer - Double Output Shaft



unit:mm

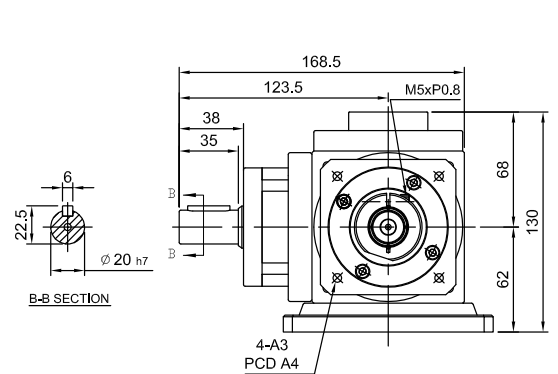
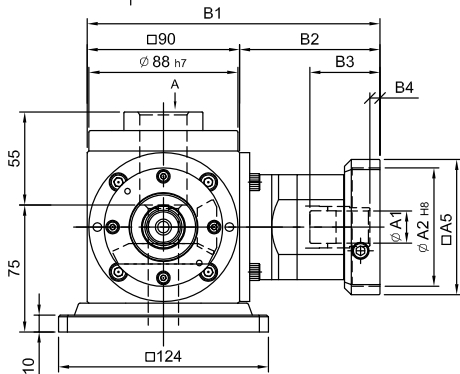
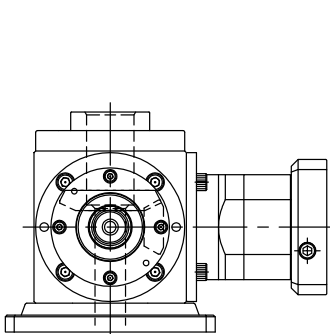
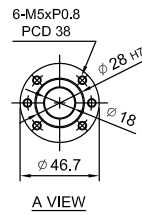
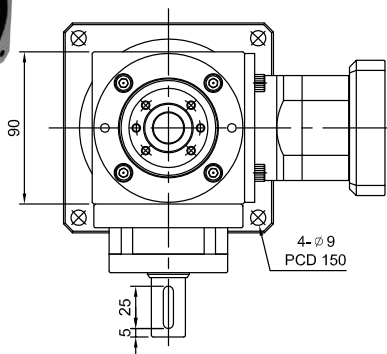
Model Code	90
A1	11 · 14 · 16 · 19
A2	50 · 60 · 70
A3	M4 · M5 · M6
A4	70 · 75 · 90
A5	64 · 70 · 80
B1	165 · 173
B2	75 · 83
B3	33.5 · 41.5
B4	6
Weight $\pm 3\%$ (kg)	5.9



JT-RP1

減速機 - 滾珠螺桿式 - 1 出軸

Reducer - Ball Screw - 1 Shout



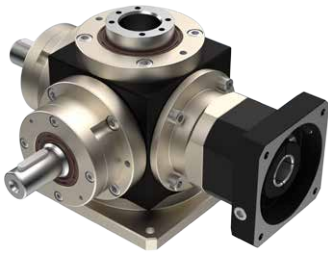
unit:mm

Model Code	90
A1	11 · 14 · 16 · 19
A2	50 · 60 · 70
A3	M4 · M5 · M6
A4	70 · 75 · 90
A5	64 · 70 · 80
B1	165 · 173
B2	75 · 83
B3	33.5 · 41.5
B4	6
Weight $\pm 3\%$ (kg)	10.1

R 軸
Shaft Direction

MODEL : JT90

RATIO : 10 (雙段 2-Stage)



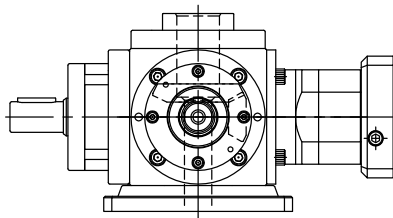
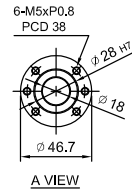
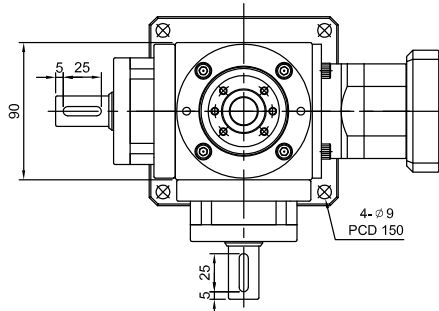
JT-RP2

減速機 - 滾珠螺桿式 - 2 出軸

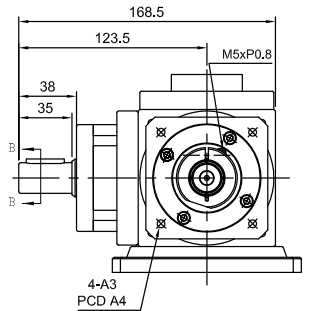
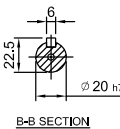
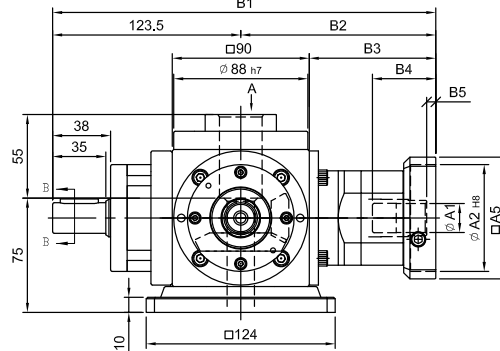
Reducer - Ball Screw - 2 Shaft

unit:mm

Model Code	90
A1	11 · 14 · 16 · 19
A2	50 · 60 · 70
A3	M4 · M5 · M6
A4	70 · 75 · 90
A5	64 · 70 · 80
B1	243.5 · 251.5
B2	120 · 128
B3	75 · 83
B4	33.5 · 41.5
B5	6
Weight ±3% (kg)	11.5



R 軸
Shaft Direction



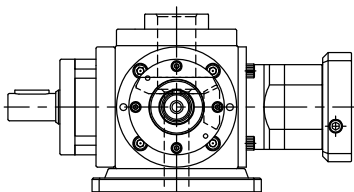
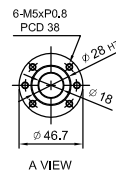
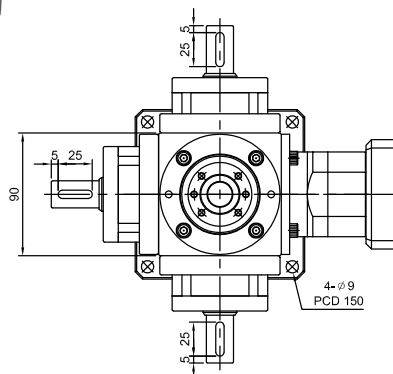
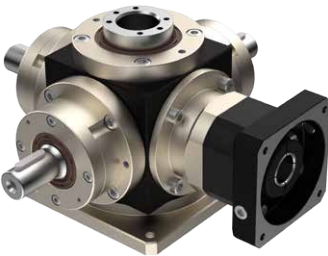
JT-RP3

減速機 - 滾珠螺桿式 - 3 出軸

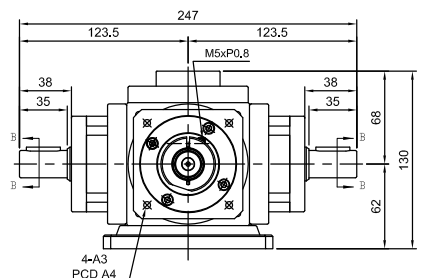
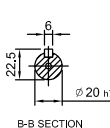
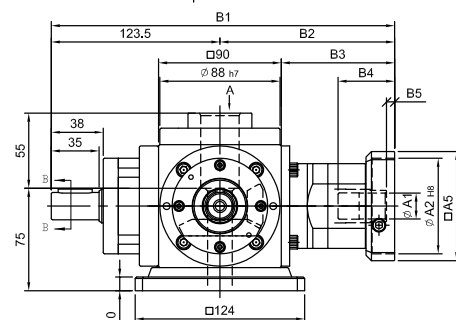
Reducer - Ball Screw - 3 Shaft

unit:mm

Model Code	90
A1	11 · 14 · 16 · 19
A2	50 · 60 · 70
A3	M4 · M5 · M6
A4	70 · 75 · 90
A5	64 · 70 · 80
B1	243.5 · 251.5
B2	120 · 128
B3	75 · 83
B4	33.5 · 41.5
B5	6
Weight ±3% (kg)	13



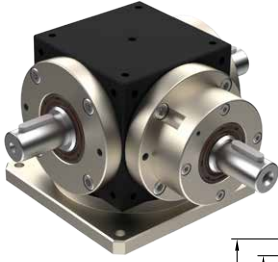
R
Shaft Direction



MODEL : JT90

RATIO : 2 (單段 1-Stage)

JT

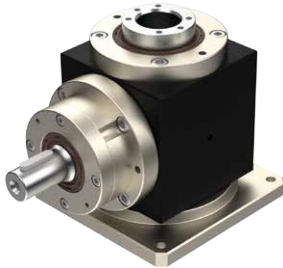
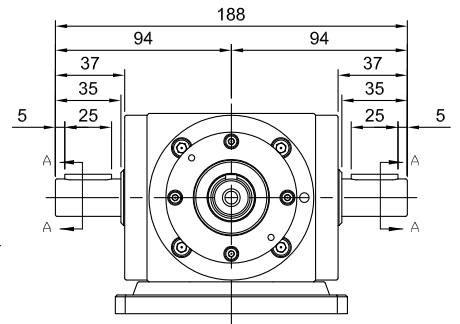
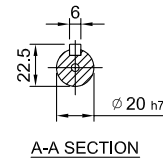
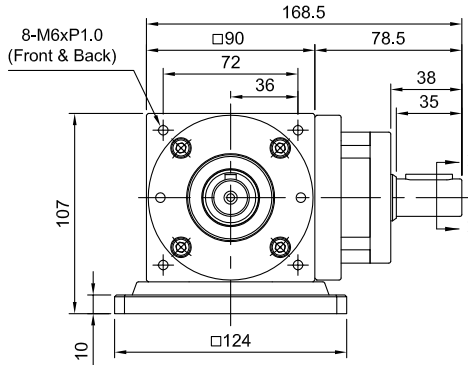
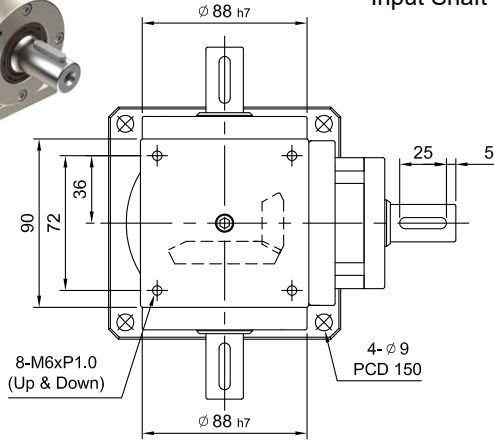


JT-DV

入力軸心 - 雙出力軸心

Input Shaft - Double Output Shaft

Model Code	90
Weight	5.9
±3% (kg)	

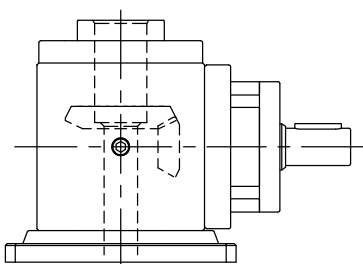
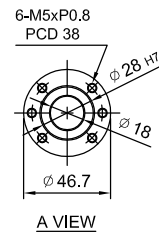
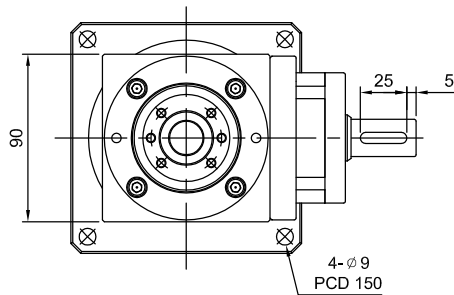


JT-DP1

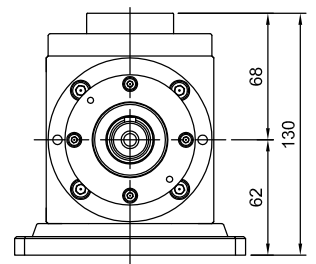
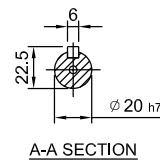
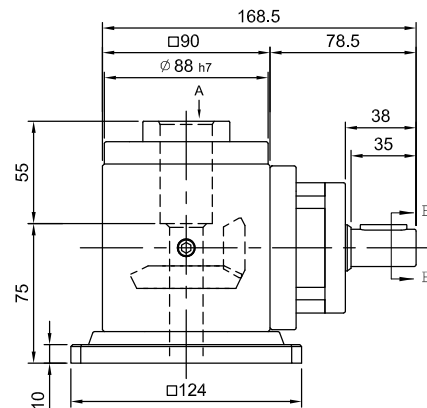
入力軸心 - 滾珠螺桿式 - 1 出軸

Input Shaft - Ball Screw - 1 Shout

Model Code	90
Weight	6.02
±3% (kg)	



R 軸
Shaft Direction



MODEL : JT90

RATIO : 2 (單段 1-Stage)

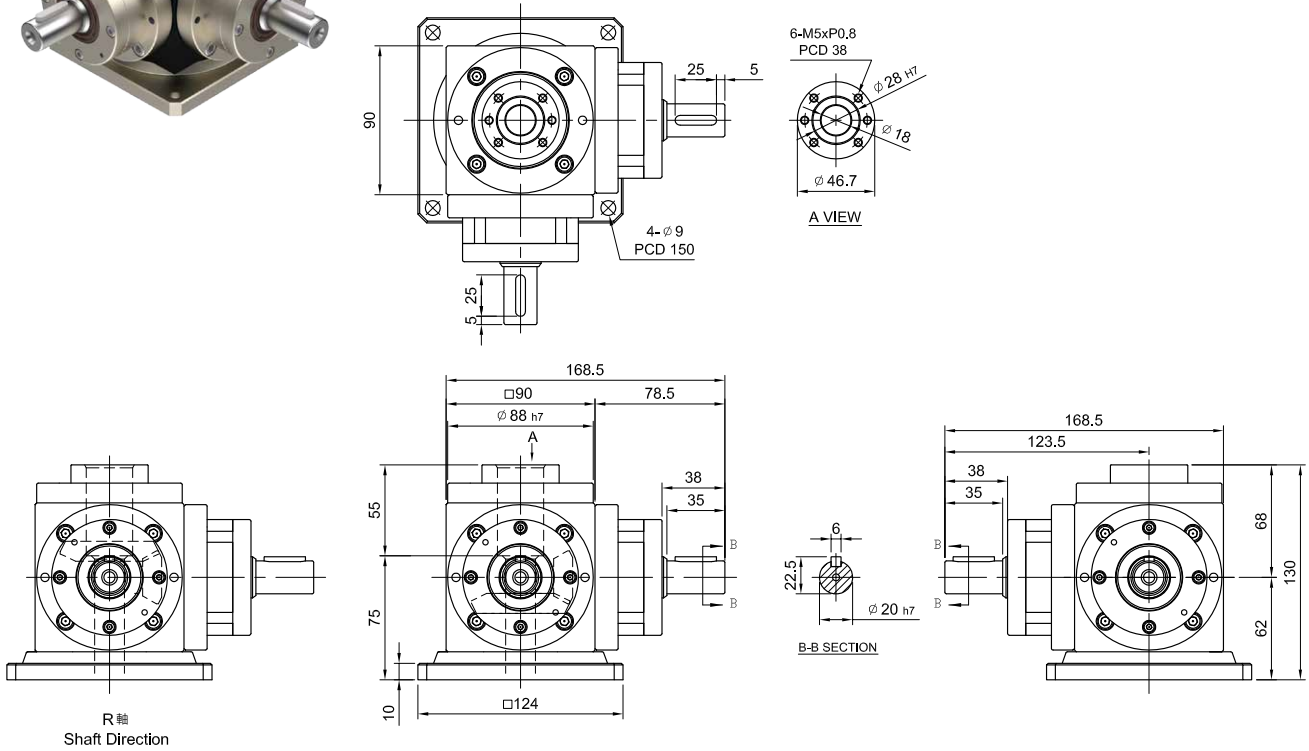


JT-DP2

入力軸心 - 滾珠螺桿式 - 2 出軸

Input Shaft - Ball Screw - 2 Shout

Model Code	90
Weight	7.46
±3% (kg)	

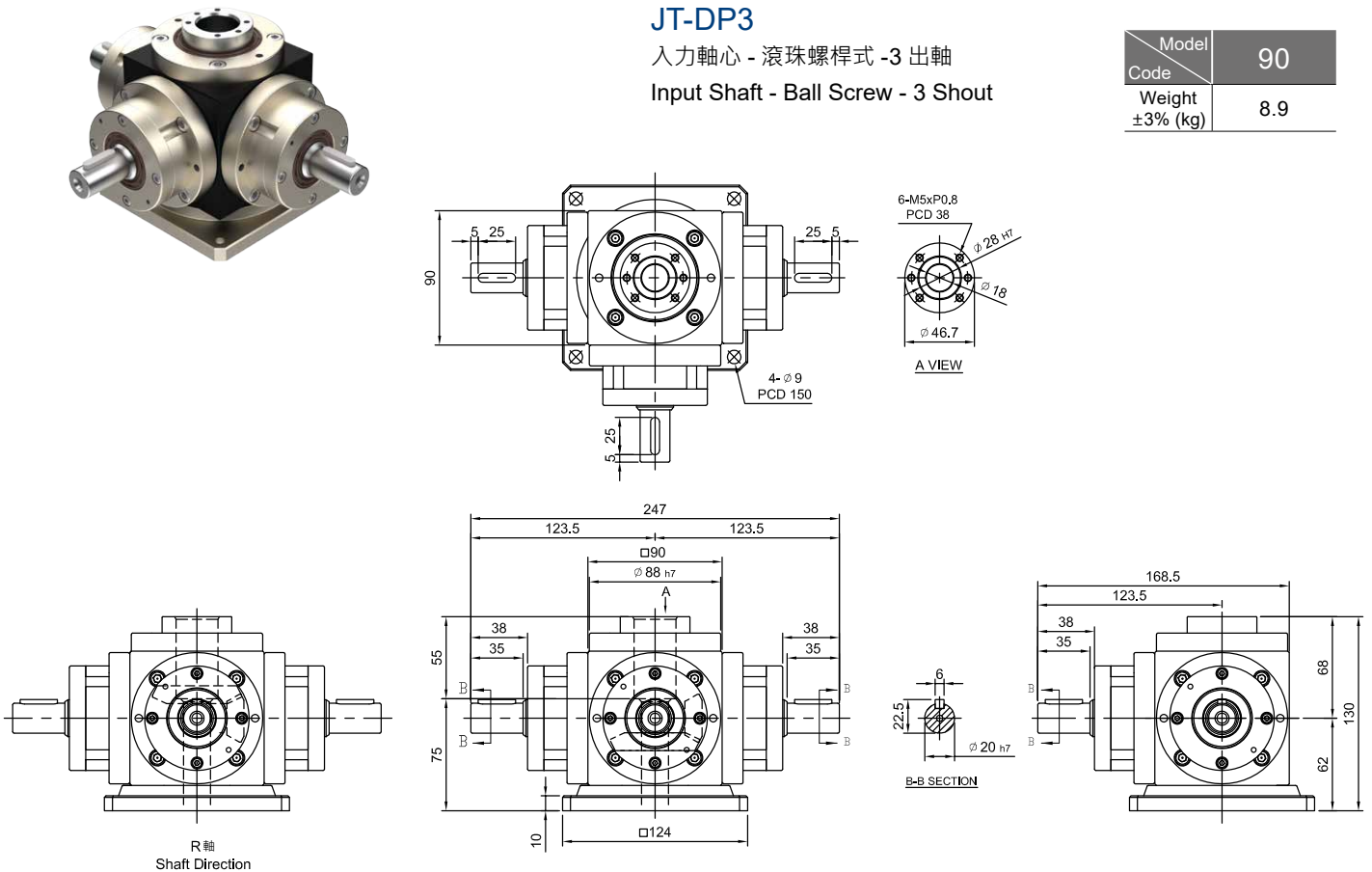


JT-DP3

入力軸心 - 滾珠螺桿式 - 3 出軸

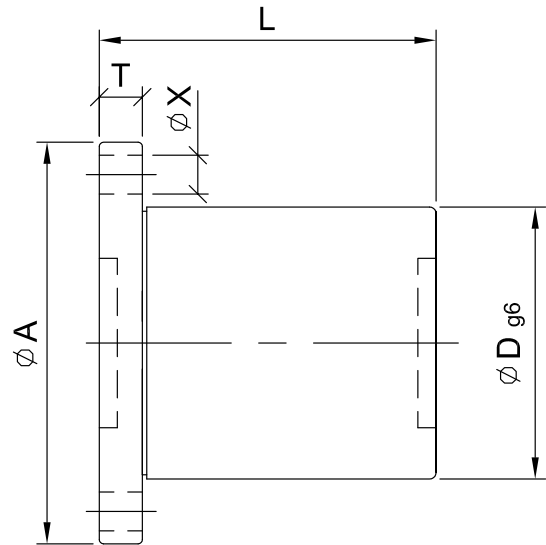
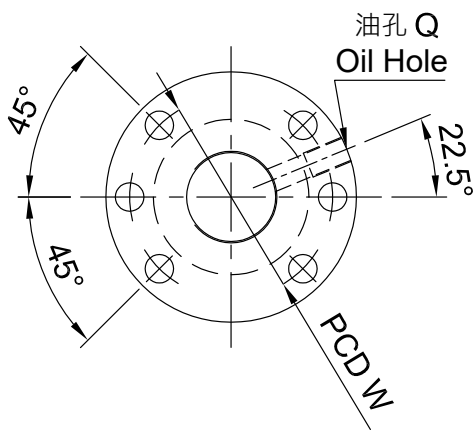
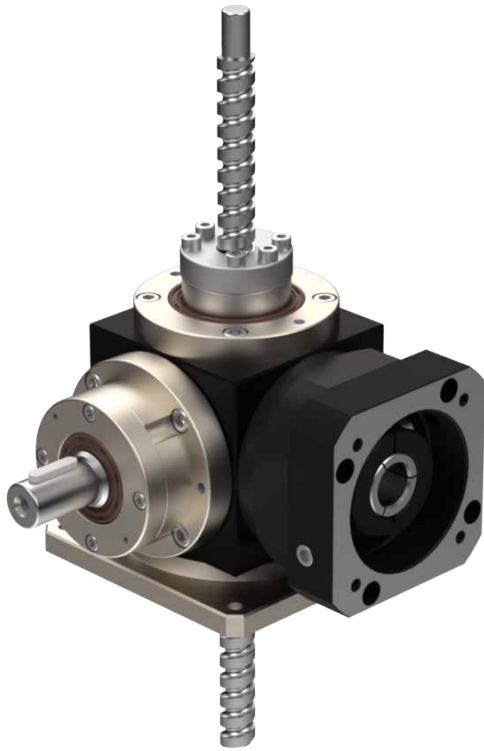
Input Shaft - Ball Screw - 3 Shout

Model Code	90
Weight	8.9
±3% (kg)	



Reference Information of Ball Screw

滾珠螺桿參考資料



配合 減速機 型號 Model of Reducer	螺桿尺寸 Screw Size		基本額定負荷 Basic Rate Load (kgf)		螺帽 Nut		法蘭 Flange			螺絲孔 Screw Bolt	油孔 Oil Hole	螺桿 長度 Length
	外徑 O.D.	導程 Lead	動負荷 Dynamic	靜負荷 Static	D	L	A	T	W	X	Q	
90	15	5	1210	2130	28	39	48	10	38	5.5	M6xP1.0	
	15	10	950	1650	28	47	48	10	38	5.5	M6xP1.0	
	15	16	910	1600	28	64	48	10	38	5.5	M6xP1.0	