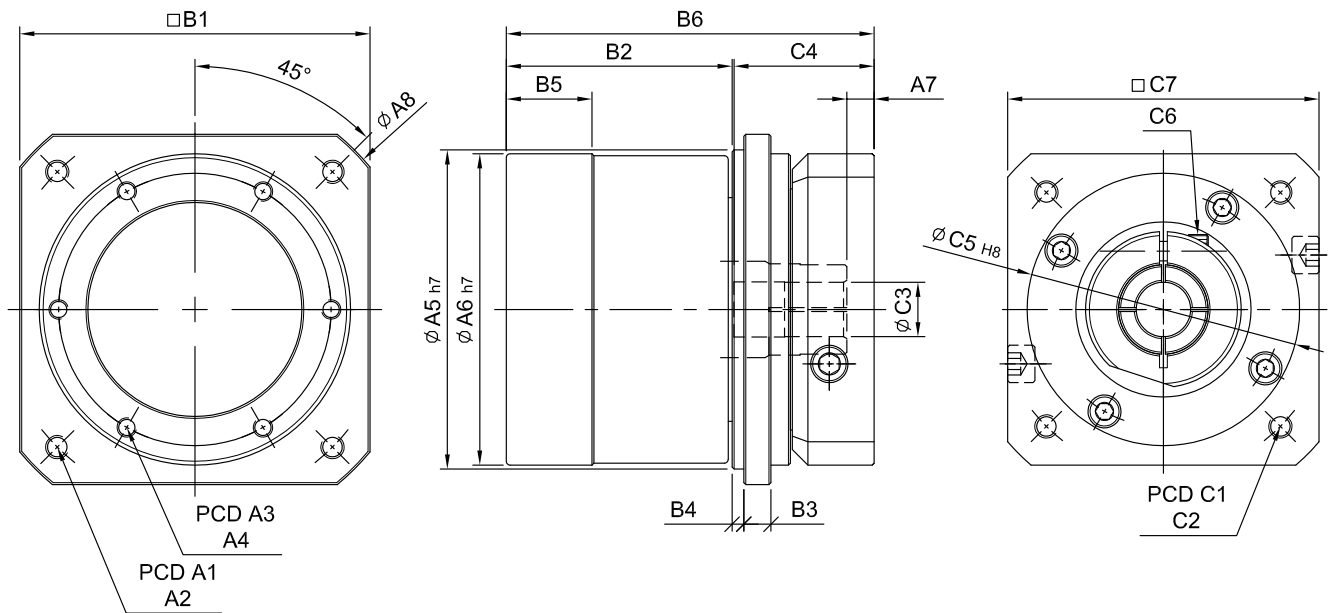
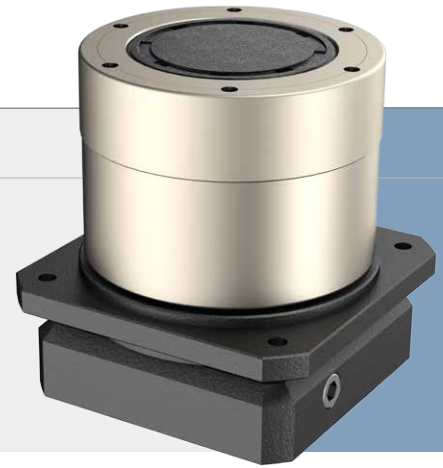


SERVOBOX Planetary Reducers

MODEL : SR

單段 1-Stage

RATIO : 2, 3, 4, 6, 9



unit: mm

Model		82	100	132
A	Code			
	A1	100	122	166
	A2	M6 x P1.0	M8 x P1.25	M10 x P1.5
	A3	70	84	114
	A4	M5 x P0.8	M6 x P1.0	M8 x P1.25
	A5	82	100	132
	A6	80	96	128
	A7	7·9	8·17	11.5
B	B1	90	108	140
	B2	58	63	85.5
	B3	7	9.5	12
	B4	3	3.5	4
	B5	22	24	34
	B6	94.5	111.5	143
C	C1	85	115	130
	C2	M6 x P1.0	M6 x P1.0	M8 x P1.25
	C3	14·19	19·24	24·28
	C4	36·43	47·56	63.5
	C5	70	95	110
	C6	M5 x P0.8	M6 x P1.0	M8 x P1.25
	C7	80	110	130

High Precision Planetary Reducer

規格 Parameter	代號	單位 Unit	速比 Ratio	82	100	132
額定輸出扭矩 Rated Output Torque (Nominal output torque)	T_{2N}	Nm	2	86	131	271
			3	82	122	243
			4	76	115	239
			6	72	111	232
			9	68	104	221
最大加速扭矩 Max. Acceleration Torque	T_{2B}	Nm	2 ~ 9	1.5 倍額定輸出力矩 1.5 Times of Rated Output Torque		
最大輸出扭矩 Max. Output Torque 急停扭矩 Emergency Stop Torque	T_{2NOT}	Nm	2 ~ 9	3 倍額定輸出力矩 3 Times of Rated Output Torque		
額定輸入轉速 Rated Input Speed	n_{1N}	rpm	2 ~ 9	3,000		
最大輸入轉速 Max. Input Speed	n_{1B}	rpm	2 ~ 9	6,000		
背隙 Backlash		arcmin	2 ~ 9	≤ 6	≤ 6	≤ 6
扭轉剛性 Torsional Rigidity		Nm/arcmin	2 ~ 9	10	14	27
容許徑向力 Max. Radial Force	F_{2rB}	N	2 ~ 9	3,000	3,400	7,200
容許軸向力 Max. Axial Force	F_{2aB}	N	2 ~ 9	1,500	1,700	3,600
使用壽命 Service Life	L_H	hr	2 ~ 9	S5 周期運轉 : >30,000 (S1 連續運轉 : >15,000 hrs) S5 Cycle Operation: >30,000 (S1 Continuous Operation: >15,000 hrs)		
效率 Efficiency	η	%	2 ~ 9	≥ 97%		
使用溫度 Operating Temperature		°C	2 ~ 9	- 25 °C ~ + 90 °C		
潤滑 Lubrication			2 ~ 9	全合成潤滑油脂 Synthetic Grease		
防護等級 Protection Class			2 ~ 9	IP65		
安裝方向 Mounting Position			2 ~ 9	任意方向 Any		
噪音值 Noise Level		dB	2 ~ 9	≤ 60	≤ 62	≤ 64
重量 Weight ±3%		Kg	2 ~ 9	2.5	4	8.9

■ 轉動慣量 Mass Moments of Inertia (kg.cm²)

Ratio	82	100	132
2~9	0.7	0.9	3.2