

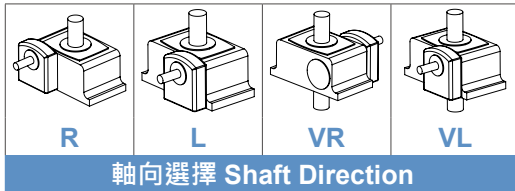
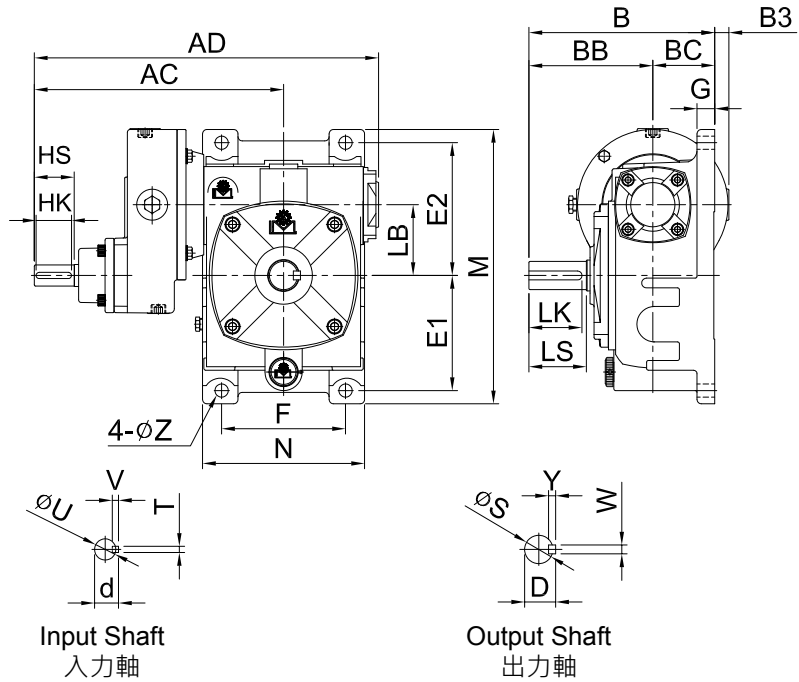
# 2-STAGE WORM REDUCER (GEAR+WORM) SERIES

## 雙段蝸輪減速機 (齒輪 + 蝸輪) 系列

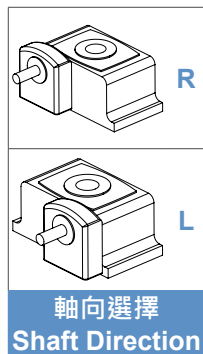
### MODEL : VG



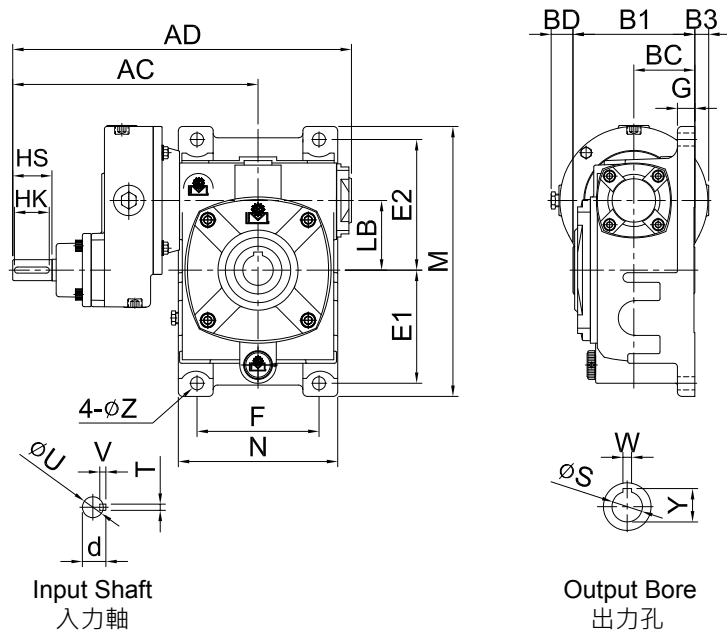
型號 Model	出力軸 Output Shaft				重量 (kg) Weight
	LS	S	D	WxYxLK	VG
80	65	32	35	10x8x60	31.4
100	75	38	41	10x8x70	50.8
120	85	45	48	12x8x80	72.8
135	95	55	59	15x10x90	102.8
155	110	60	64	15X10X105	136



### MODEL : VOG



型號 Model	出力孔 Output Bore			重量 (kg) Weight
	W	Y	S	VOG
80	10	38.3	35	32.8
100	10	43.3	40	50.8
120	12	48.3	45	72.8
135	15	59.3	55	102.2
155	15	69.3	65	133



unit: mm

型號 Model	馬力 HP (4P)	減速比 Ratio	腳座 Foot Stock														入力軸 Input Shaft					
			AC	AD	B	BB	BC	BD	B1	B3	LB	E1	E2	M	F	N	G	Z	HS	U	d	TxVxHK
80	1/2	80~300	282	389	210	140	70	25	139	16	80	130	150	315	140	183	20	15	45	24	27	7x7x40
	1	80~160																				
100	1	80~300	306	439	260	170	90	5	179	0	100	155	180	380	190	230	26	15	45	24	27	7x7x40
	2	80~160																				
120	1	80~300	344	504	290	190	100	0	199	0	120	185	215	450	220	266	30	18	45	24	27	7x7x40
	2	80~200																				
135	2	80~300	401	582	324	214	110	16	219	16	135	210	235	495	260	305	35	18	55	28	31	7x7x50
	3	80~200																				
155	3	80~300	420	620	393	253	140	2.5	263.5	0	155	145	265	460	290	340	45	20	55	28	31	7x7x50
	5	80~160																				