

MODEL : PC77

RATIO : 35.7

用途：電動堆高機 / 油壓拖板車 (動力輪減速機)

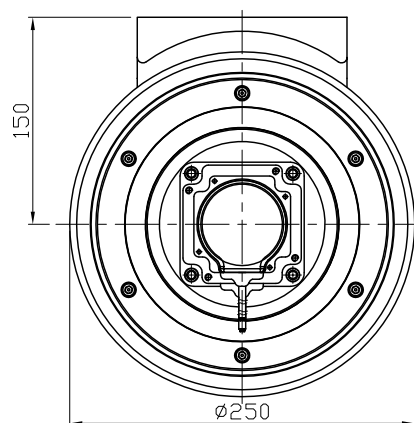
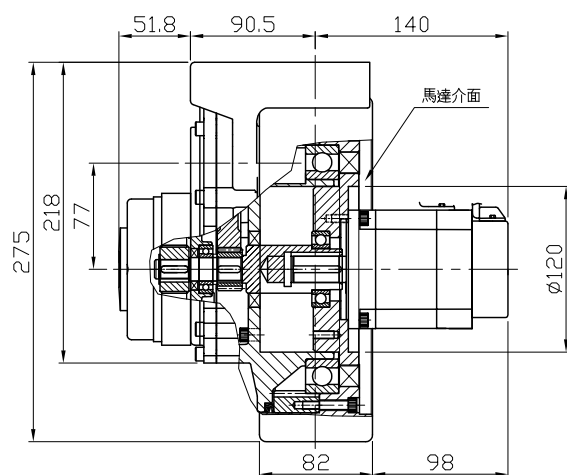
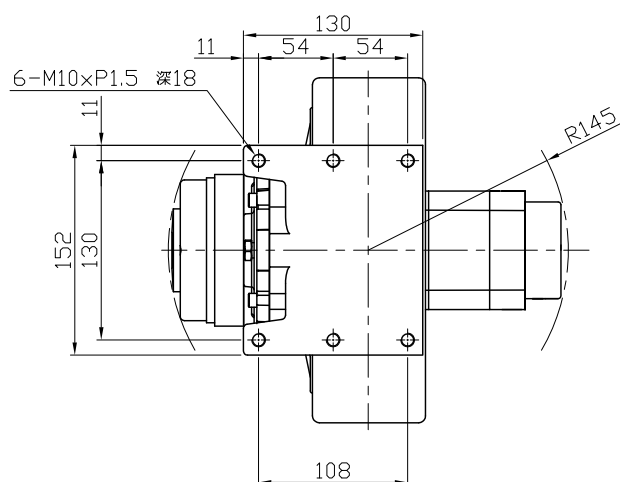
Application: Power wheel

型式：臥式

Specification: Horizontal

段數：1 段平行齒輪 +1 段內齒輪

Stage: 1 stage helical gear + 1 stage Planetary gear



規格 Model No.	Unit	Ratio	35.7				
額定輸出扭矩 (額定 / 連續運轉) Rated Output Torque	Nm	400					
最大輸出扭矩 (急停 / 瞬間啟動) Max. Output Torque	Nm	3 倍額定輸出扭矩 3 Times of Rated Output Torque					
額定輸入轉速 Rated Input Speed	rpm				3,600		
最大輸入轉速 Max. Input Speed	rpm				5,300		
馬達額定功率 (僅供參考) Motor Rated Input Power	W	2000W					
噪音值 Noise Level(量測距離 30cm)	dB	≤ 80					
容許徑向力 Max. Radial Force	kgf				1,500		
容許軸向力 Max. Axial Force	kgf				802		
效率 Efficiency	%	90					
使用溫度 Operating Temperature	°C				-15°C ~ +80°C		
減速機重量 Reducer Weight ±3%	Kg				29		