

MODEL : PC100

RATIO : 30、39、62、82

用途：各類傳動設備

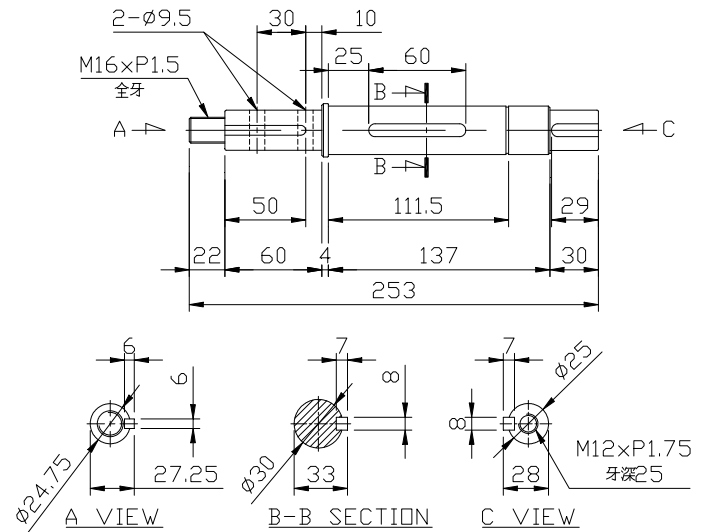
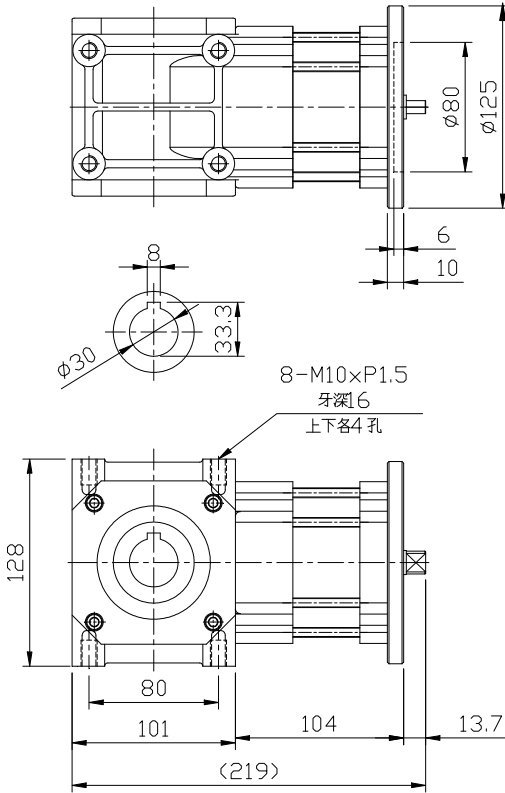
Application: Power Transmission

型式：行星式減速機 (中空型)

Specification: Right Angle, Hollow Shaft

段數：2 段行星齒輪 + 1 段傘齒輪

Stage: 2 stage Planetary gear + 1 stage bevel gear



規格 Model No.	Ratio	30	39	62	82
額定輸出扭矩 (額定 / 連續運轉) Rated Output Torque	Nm				
最大輸出扭矩 (急停 / 瞬間啟動) Max. Output Torque	Nm	3 倍額定輸出扭矩 3 Times of Rated Output Torque			
額定輸入轉速 Rated Input Speed	rpm	4,000			
最大輸入轉速 Max. Input Speed	rpm	5,000			
馬達額定功率 (僅供參考) Motor Rated Input Power	W	1,500	1,500	1,000	1,000
噪音值 Noise Level(量測距離 30cm)	dB	≤ 70	≤ 70	≤ 70	≤ 67
容許徑向力 Max. Radial Force	kgf	1,700			
容許軸向力 Max. Axial Force	kgf	900			
效率 Efficiency	%	88	88	86	85
使用溫度 Operating Temperature	°C	-15°C ~ +80°C			
減速機重量 Reducer Weight ±3%	Kg	7.3			