

MODEL : MD17

RATIO : 21、25.7、28.6、32、43、48

用途：電動輪椅傳動軸

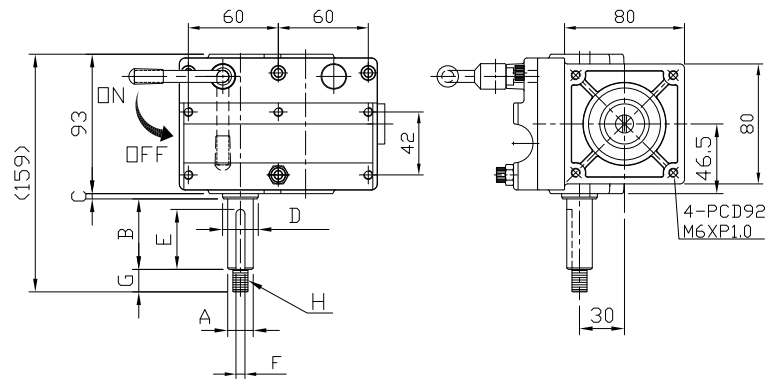
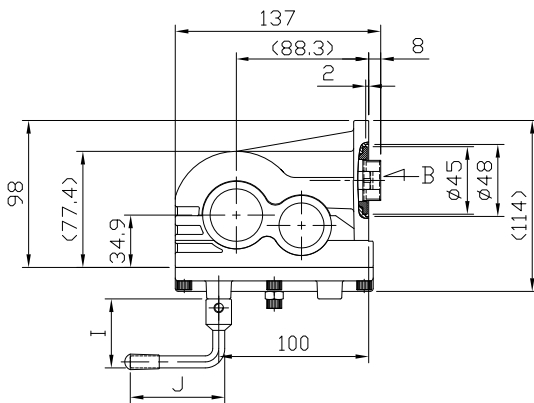
Application: Transaxle for Powered Wheelchair

型式：90 度型 [有離合器功能]

Specification: Right Angle, Clutch

段數：1 段蝸輪齒 +1 段平行齒輪

Stage: 2 stage, first stage is worm gear, second is helical gear set



說明：參考載重 (機台重量 80kg+ 使用者載重 160kg) = 總重 ≤ 240kg (2 台)

註：此圖為 (右軸)

Max. Loading capacity : Wheel chair 80kg+ Personnel 160kg ≤ 240kg (2 pieces)

Remark: The drawing is right direction.

NO	A	B	C	D	E	F	G	H	I	J
規格說明	≤ Φ20	≤ 60	≤ 20	≤ Φ24.8	≤ 55	≤ 6	≤ 15	≤ 12	≤ 200	≤ 80

規格 Model No.	Unit	Ratio					
		21	25.7	28.6	32	43	48
額定輸出扭矩 (額定 / 連續運轉) Rated Output Torque	Nm	38	42	43	48	43	48
最大輸出扭矩 (急停 / 瞬間啟動) Max. Output Torque	Nm	3 倍額定輸出扭矩 3 Times of Rated Output Torque					
額定輸入轉速 Rated Input Speed	rpm	4,000					
最大輸入轉速 Max. Input Speed	rpm	5,300					
馬達額定功率 (僅供參考) Motor Rated Input Power	W	350W	350W	350W	350W	250W	250W
噪音值 (量測距離 30cm) Noise Level(measured form 30cm)	dB	≤ 63	≤ 63	≤ 63	≤ 60	≤ 60	≤ 60
容許徑向力 Max. Radial Force	kgf	400					
容許軸向力 Max. Axial Force	kgf	220					
效率 Efficiency	%	≥ 84	≥ 84	≥ 84	≥ 84	≥ 80	≥ 80
使用環境溫度 Ambient Temperature	°C	-10°C ~ +40°C					
減速機重量 Reducer Weight ±3%	Kg	2.5					