

SOG

Features of SOG Series

SOG 系產品特性

- ◆ 安裝便利，無方向限制。
Easy to install, Directions are not limited.
- ◆ 安裝、調整維護容易。
Easy to install and maintain.
- ◆ 直裝以中空軸傳動，減少零配件。
Speed reducers are mounted directly on the driven shaft, number of parts and fittings are reduced.

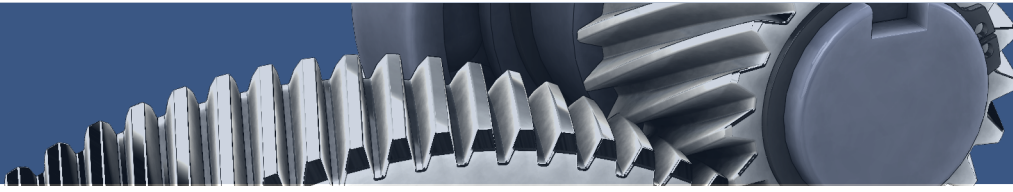


Indication of Model Numbers

機種型號表示

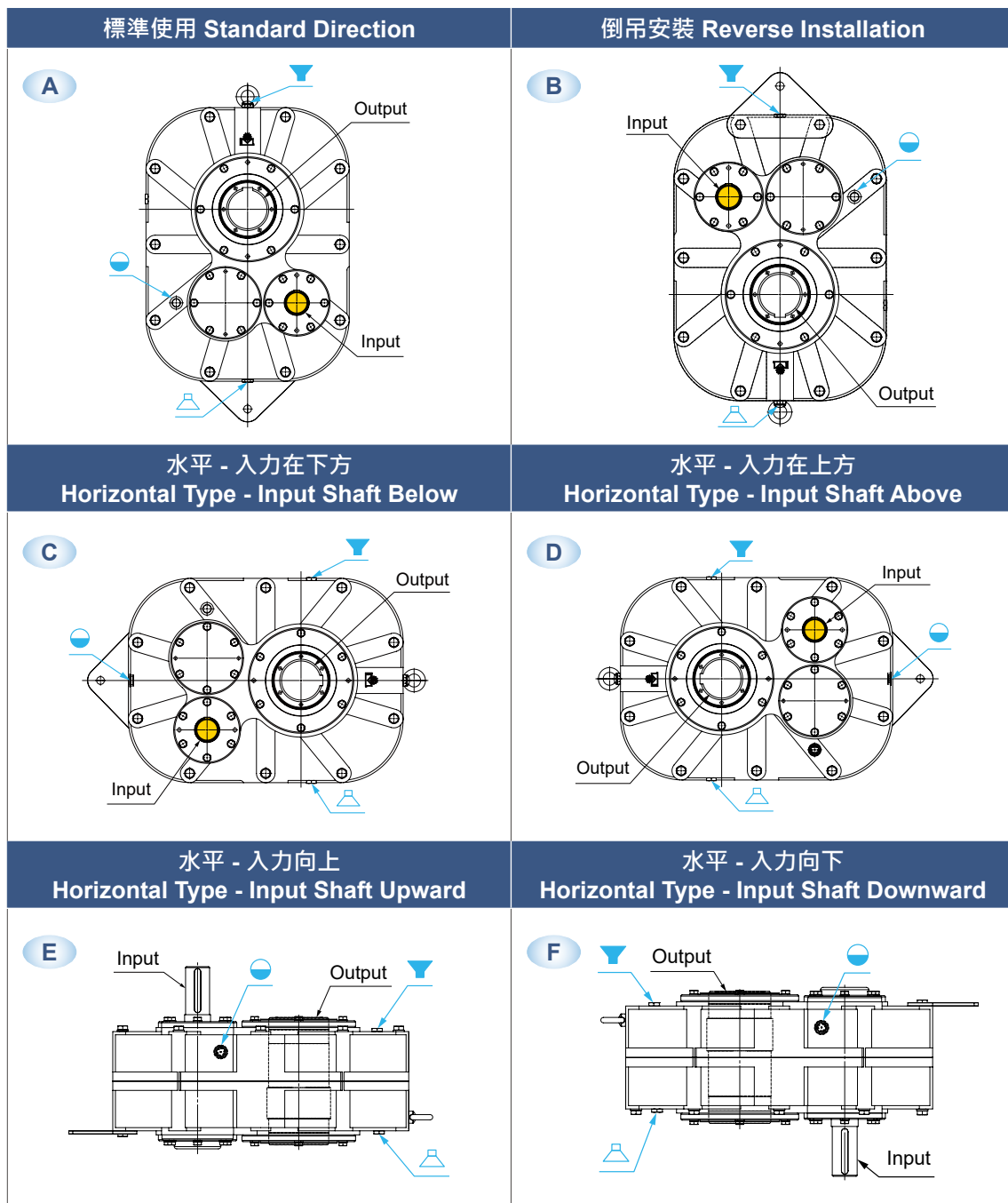
SOG		30	<input type="checkbox"/>	-	30	-	1	-	A
減速機型 Type	型號 Model	單向軸承 One-way bearing		減速比 Ratio	馬力 Horse Power		安裝方向 Installation Direction		
SOG	30	<input type="checkbox"/>	: 無 none	10	1HP ~ 75HP		A		
SOGM	35	C	: 單向順時針 One-way clockwise	15	(4P)		B		
	40		: 單向逆時針 One-way counterclockwise	20			C		
	45	R	: 單向逆時針 One-way counterclockwise	25			D		
	50		: 單向逆時針 One-way counterclockwise	30			E		
	55		: 單向逆時針 One-way counterclockwise				F		
	60								
	65								
	75								
	85								
	95								
	105								

◆ 如需其他減速比，請與我們連絡。 For special ratio, please contact us.



■ 安裝方向 Installation Direction

- 油面計
Oil Indicator
 - ◆ 正常的使用方向可以使減速機保持較高的壽命。
The life time of gear reducer can be prolonged in proper direction.
- ▼ 注油栓
Oil Plug
 - ◆ 安裝時請注意油面計、注油栓及排油栓的位置以便日後維護。
Please note the positions of oil gauge, oil filling plug and oil drain plug to facilitate the maintenance afterwards.
- △ 排油栓
Oil Drain Plug
 - ◆ 減速機使用方向特殊時，請與我們連繫。
For special installation direction, please contact us.



SHAFT-MOUNTED GEAR REDUCER SERIES

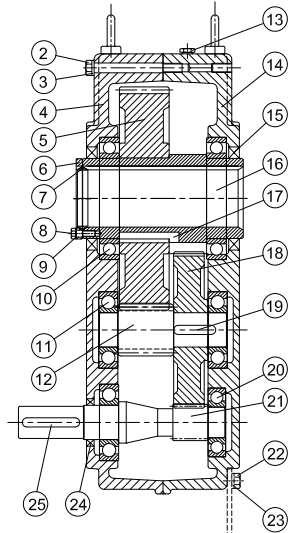
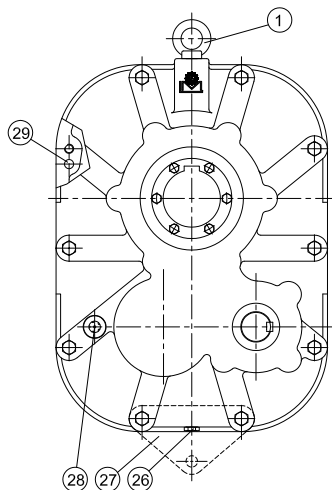
軸上型齒輪減速機系列

實際減速比對照表 Actual Ratio Table (SOG & SOGM)

SOG & SOGM				SOG & SOGM				SOG & SOGM				SOG			
型號 Model	馬力 HP (4P)	減速比 Ratio	實際減速比 Actual Ratio	型號 Model	馬力 HP (4P)	減速比 Ratio	實際減速比 Actual Ratio	型號 Model	馬力 HP (4P)	減速比 Ratio	實際減速比 Actual Ratio	型號 Model	馬力 HP (4P)	減速比 Ratio	實際減速比 Actual Ratio
30	1	10	10.15	50	5	10	9.99	65	7 1/2	10	10.16	85	25	10	10.52
		15	15.22			15	14.78			15	14.60			15	14.51
		25	25.00			20	20.02			20	20.00			20	19.59
		30	29.60			25	25.00			25	25.00			25	25.04
35	2	10	10.00	55	5	30	29.60	75	10	10	10.16	95	30	10	10.52
		15	15.00			10	9.99			15	14.60			15	14.51
		20	20.18			15	14.78			20	20.00			20	19.59
		25	25.00			20	20.02			25	25.00			25	25.04
40	2	30	30.00	60	7 1/2	25	25.00	75	15	30	29.60	105	40	30	29.72
		10	10.09			10	10.16			10	10.00			20	19.82
		15	15.00			15	14.60			15	15.00			25	24.44
		20	20.18			20	20.00			20	20.00			30	29.84
45	3	25	25.00	60	7 1/2	25	25.00	75	20	25	25.00	105	50	20	19.82
		30	30.00			30	29.60			30	29.60			25	24.44
		10	10.15			10	10.16			10	10.00			30	29.84
		15	15.22			15	14.60			15	15.00			30	29.84
45	3	20	19.74	60	10	20	20.00	75	20	20	20.00	105	60	15	14.97
		25	25.00			25	25.00			25	25.00			20	19.87
		30	29.61			30	29.60			30	29.60			25	24.86
		10	10.15			10	10.16			10	10.00			30	29.86
45	3	15	15.22	60	10	15	14.60	75	20	15	15.00	105	75	15	14.97
		20	19.74			20	20.00			20	20.00			20	19.87
		25	25.00			25	25.00			25	25.00			25	24.86
		30	29.61			30	29.60			30	29.60			30	29.86

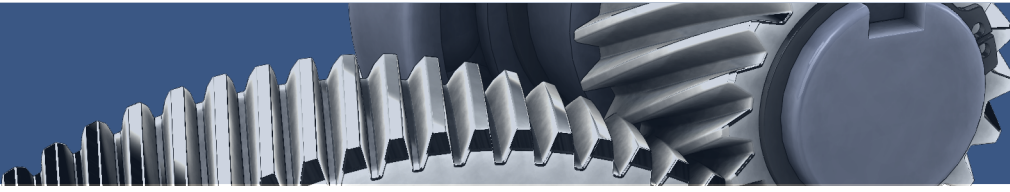
零件組合圖 System Drawing

MODEL : SOG



NO.	零件名稱	Name of Parts	NO.	零件名稱	Name of Parts
1	吊環	Hoisting Ring	※7	迫緊環	Packing Ring
2	六角頭螺絲	Hex Head Screw	8	六角頭螺絲	Hex Head Screw
3	彈簧華司	Spring Washer	9	彈簧華司	Spring Washer
4	齒輪箱 (左)	Housing Shell (Left)	10	滾珠軸承	Ball Bearing
5	D 齒輪	D Gear	11	滾珠軸承	Ball Bearing
※6	迫緊片	Packing Ring	12	C 齒輪軸	C Gear Shaft
			13	注油栓	Oil Plug
			14	齒輪箱 (右)	Housing Shell (Right)
			15	油封	Oil Seal
			16	出力軸	Output Shaft
			17	單圓鍵	Key
			18	B 齒輪	B Gear
			19	單圓鍵	Key
			20	滾珠軸承	Ball Bearing
			21	A 齒輪軸	A Gear Shaft
			22	六角頭螺絲	Hex Head Screw
			23	彈簧華司	Spring Washer
			24	油封	Oil Seal
			25	雙圓鍵	Key
			26	洩油栓	Drain Plug
			27	固定片	Setting Plate
			28	油鏡	Oil Gauge
			29	固定梢	Locating Pin

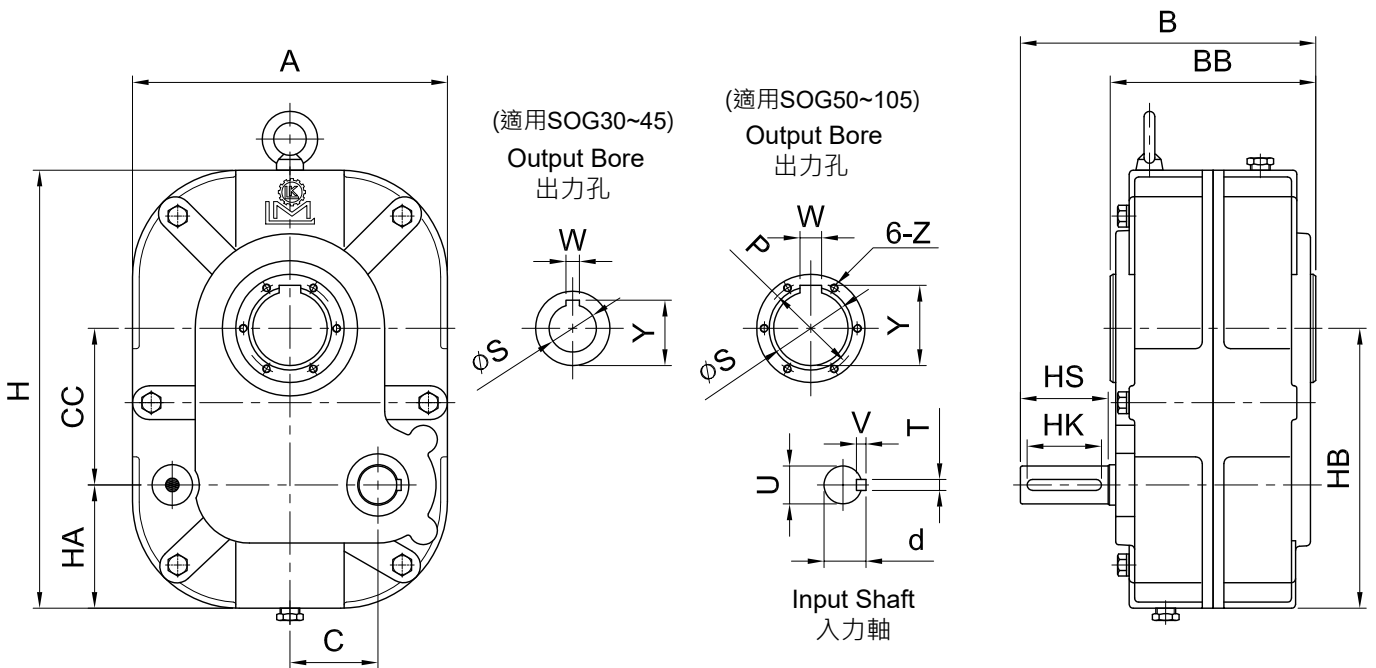
※ 選配件 Optional Accessories



MODEL : SOG

RATIO : 10, 15, 20, 25, 30

馬力 (HP) : 1HP ~ 75HP



unit: mm

型號 Model	馬力 HP (4P)	減速比 Ratio	A	B	BB	C	CC	H	HA	HB	輸入軸 Input Shaft				出力孔 Output Bore				重量 Weight (kg)	油量 Oil (ℓ)	
											HS	U	d	TxVxHK	S	W	Y	P			Z
30	1	10~30	166	154	110	49.5	81	233	69	150	45	19	21.5	6x6x35	30	8	33.3	-	-	15	0.4
35	2	10~30	176	165.5	117	52.5	87	247	71	158	50	24	27	8x7x40	35	10	38.3	-	-	17	0.8
40	2	10~30	176	165.5	117	52.5	87	247	71	158	50	24	27	8x7x40	40	10	43.3	-	-	19	0.8
45	2·3	10~30	210	198	132	58	104	288	77	181	65	28	31	8x7x55	45	12	48.3	-	-	28	1
50	5	10~30	233	218.5	152	65	116	324	91	207	65	28	31	8x7x55	50	14	53.8	66	M6	37	1.3
55	5	10~30	233	218.5	152	65	116	324	91	207	65	28	31	8x7x55	55	16	59.3	69	M6	36	1.4
60	7 1/2 10	10~30 10~30	276	241.5	165	78.5	140	380	101	241	75	32	35	10x8x65	60	16	64.3	80	M8	58	3
65	7 1/2 10	10~30 10~30	276	241.5	165	78.5	140	380	101	241	75	32	35	10x8x65	65	16	69.3	82	M8	57	3
75	15-20	10~30	355	294	210	84	168	480	137	305	85	42	45	12x8x75	75	20	79.9	92	M8	121	3.9
85	25-30	10~30	380	329	244	108	184	530	156	340	85	42	45	12x8x75	85	24	91.5	104	M8	173	7
95	40-50	20~30	450	381	286	119	219	625	181	400	100	50	53.5	14x9x90	95	24	101.5	120	M8	257	7.5
105	60-75	15~30	550	445	318	133	253	740	212	465	120	60	64	16x10x110	105	28	111.4	130	M10	420	14

重量不含馬達及潤滑油。 The weight does not include motor and lubricant.

SHAFT-MOUNTED GEAR REDUCER SERIES

軸上型齒輪減速機系列

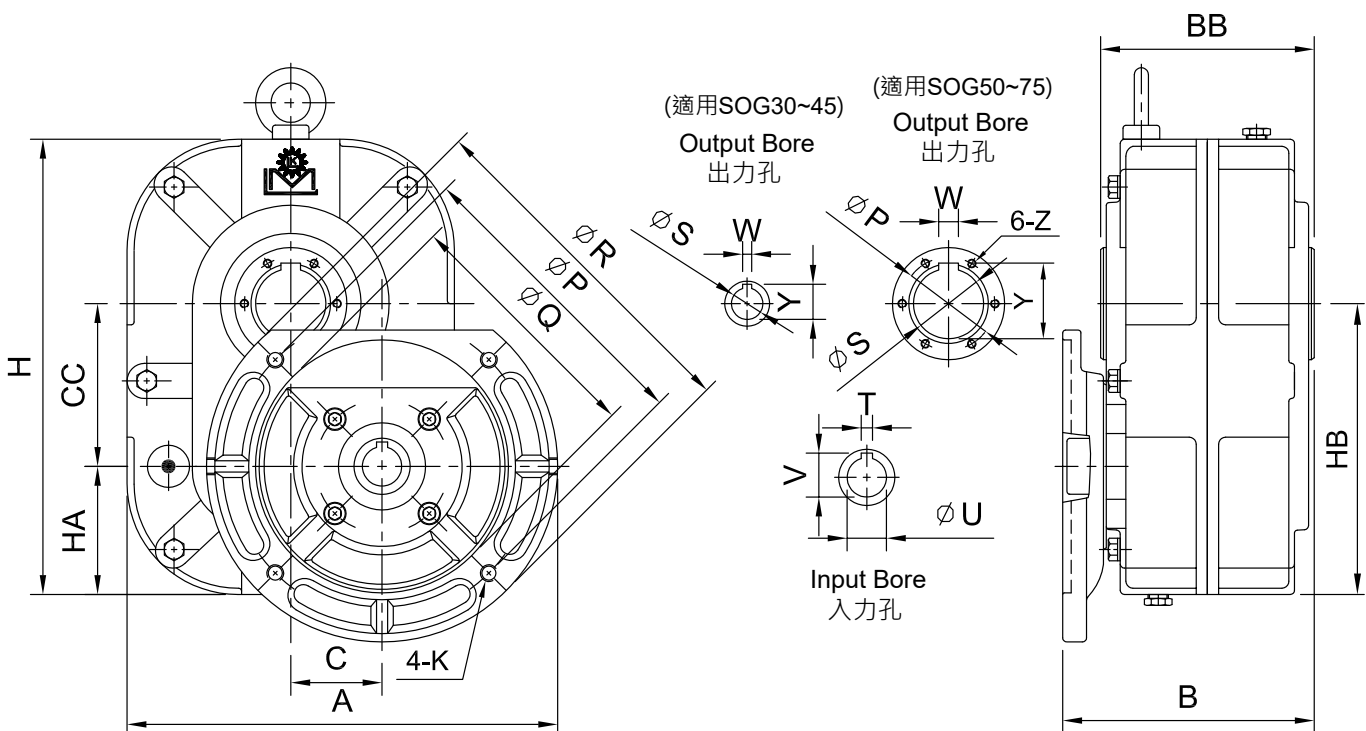
MODEL : SOGM

RATIO : 10, 15, 20, 25, 30

馬力 (HP) : 1HP ~ 20HP



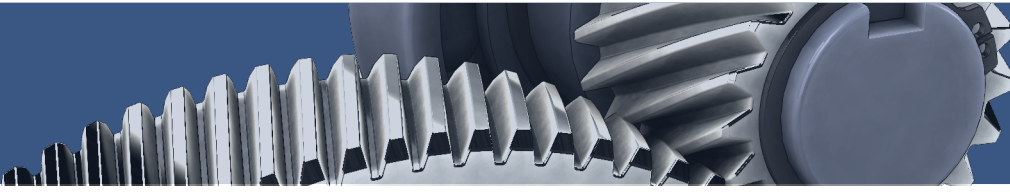
◆ SOGM 沒有單向設計，若需要單向請選擇 SOG60#~105# 的型號。



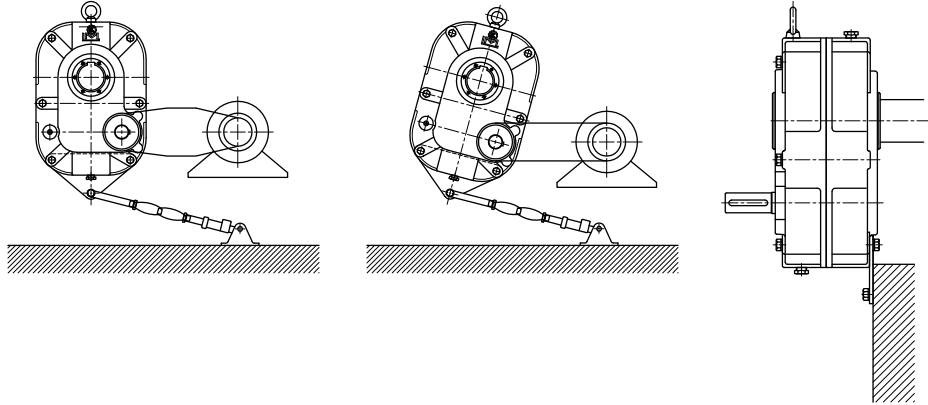
unit: mm

型號 Model	馬力 HP (4P)	減速比 Ratio	A	B	BB	C	CC	HA	HB	H	馬達盤 IEC 及入力孔 Motor Flange & Input Bore						出力孔 Output Bore					重量 Weight (kg)	油量 Oil (ℓ)	
											P	Q	R	K	V	T	U	S	W	Y	P			Z
											Ø	Ø	Ø	Ø	Ø	Ø	Ø	Ø	Ø	Ø	Ø			Ø
30	1	10~30	233	135	110	49.5	81	69	150	233	165	130	200	M10	21.8	6	19	30	8	33.3	-	-	15	0.4
35	2	15~30	241	142	117	52.5	87	71	158	247	165	130	200	M10	27.3	8	24	35	10	38.3	-	-	17	0.8
40	2	10~30	241	142	117	52.5	87	71	158	247	165	130	200	M10	27.3	8	24	40	10	43.3	-	-	19	0.8
45	2 3	10~30	263	157	132	58	104	77	181	288	165	130	200	M10	27.3	8	24	45	12	48.3	-	-	30	1
			288	160	180	65	116	91	207	324	215	180	250	M12	31.3	8	28							
50	5	15~30	307	180	152	65	116	91	207	324	215	180	250	M12	31.3	8	28	50	14	53.8	66	M6	39	1.3
55	5	15~30	307	180	152	65	116	91	207	324	215	180	250	M12	31.3	8	28	55	16	59.3	69	M6	38	1.4
60	7 1/2 10	15~30	367	201	165	78.5	140	101	241	380	265	230	300	M12	41.3	10	38	60	16	64.3	80	M8	65	3
65	7 1/2 10	15~30	367	201	165	78.5	140	101	241	380	265	230	300	M12	41.3	10	38	65	16	69.3	82	M8	64	3
75	15~20	10~30	436	243	210	84	168	137	305	480	300	250	348	M16	45.3	12	42	75	20	79.9	92	M8	131	3.9

重量不含馬達及潤滑油。 The weight does not include motor and lubricant.



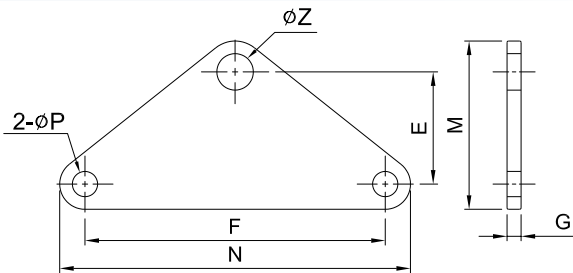
拉桿式固定片使用方式 Example for Brace Rod Used



◆ 拉桿請自備。
The brace rod is optional.

選配品 Optional Accessories (適用 SOG 系列)

固定片 Setting Plate

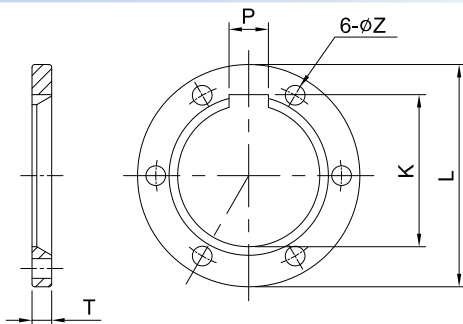


◆ 每台減速機出貨時，附一片固定片。
We will provide a setting plate with every gear reducer.

unit: mm

Model	F	N	E	M	G	Z	P
SOG-30	107	125	40	60	5	13	9
SOG-35·40	116	136	45	67	5	13	9
SOG-45	146	170	56	80	5	13	11
SOG-50·55	166	192	70	96	5	13	11
SOG-60·65	204	236	70	100	6	15	13
SOG-75	130	165	56	90	6	15	13
SOG-85	140	174	65	99	8	16	16
SOG-95	175	215	100	140	8	20	15
SOG-105	205	275	100	170	8	21	21

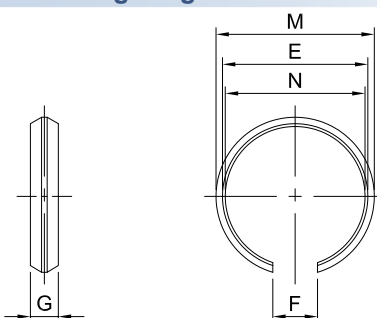
迫緊片 Packing Sheet



unit: mm

Model	T	K	L	P	Z
SOG-50	7	54.1	79	14	7
SOG-55	7	59.5	80	16	7
SOG-60	8	64.6	94	16	9
SOG-65	8	69.5	96	16	9
SOG-75	8	80.1	106	20	9
SOG-85	8	93.5	119	24	9
SOG-95	10	103.5	139	24	9
SOG-105	10	111.9	149	28	11

迫緊環 Packing Ring



unit: mm

Model	G	N	E	M	F
SOG-50	10	50	52	56.6	16
SOG-55	10	55	57	61.6	18
SOG-60	12	60	62	67.8	18
SOG-65	12	65	67	72.8	18
SOG-75	12	75	77	82.8	22
SOG-85	14	85	87	93.9	26
SOG-95	15	95	97	104.5	26
SOG-105	15	105	107	114.5	30