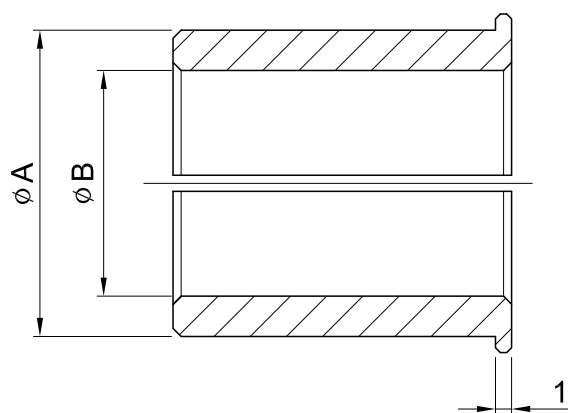


Bushing

軸套

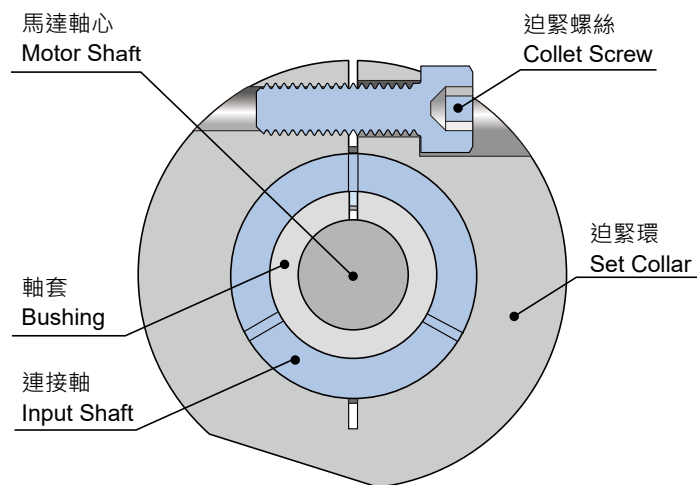


軸套內徑為所使用伺服馬達的輸出軸軸徑。
 下表中沒有的情況下需要插入軸套，在您所使用的輸出軸軸徑的近似值中選擇大值。
 For motor shaft diameters not listed, gearboxes will be supplied with a bush to suit.
 The bore sizes may be supplied as a larger bore with a bush.

連接軸 孔徑 Shaft Bore øA 軸套 孔徑 Bushing Bore øB	8	11	14	19	22	24	28	32	35
6	●	●							
6.35	●								
8		●							
9		●							
10			●						
11			●						
12			●						
12.7			●						
14				●					
15.85				●					
16				●		●	●		
19					●	●	●		
22						●	●	●	
24							●		●
28								●	●
32									●

Collet Locking Mechanism

筒夾式連結機構



迫緊環螺絲及迫緊環扭矩表 Collet Screw & Collar Torque Table

Model					迫緊環螺絲規格 Spec. of Collet Screw	螺絲強度等級 Screw Grade	螺絲鎖緊扭矩 Tighten Torque (Nm)	迫緊扭矩 Clench Torque (Nm)
ST	HY	WE ANE	PW	GT				
-	55	30 40	30 40	60 85	M4 x P0.7	12.9	4.83	87
65 75	75	50	50 60 70	110 135 170(雙段 2-Stage) 200(雙段 2-Stage)	M5 x P0.8	12.9	10	164
90 110	90 115	60 70	-	170(單段 1-Stage) 200(單段 1-Stage)	M6 x P1.0	12.9	16.3	233
140	130	-	-	-	M8 x P1.25	12.9	41	423
170 210 240	140 160 190 230	-	-	-	M10 x P1.5	12.9	81	678
280	270	-	-	-	M10 x P1.5 M12 x P1.75	12.9	81 110	678 813

※ 馬達扭矩超過迫緊環扭矩時，可能導致打滑。It will cause slip when motor torque exceed clenched torque.

Selection Table of Motor for Reference

馬達選用參考表

單段 1-Stage

Model	ST	-	-	65	-	75	-	90	-	110	140	170	210	240	280	
	FT	-	60	-	70	-	-	-	-	-	-	-	-	-	-	
	HY	-	55	-	75	-	90	-	-	115	130	140	160	190、230	-	270
	WE	-	30	-	40	50	-	-	60、70	-	-	-	-	-	-	-
	GT	60	-	-	85、110	135	-	-	170、200	-	-	-	-	-	-	-
Power	Input Bore	8	8	9	14	14	14	16	19	19	24	32	35	42	48	55
		8	9	11	14	14	19	19	19	22	28	32	35	48	55	60
100 W	●	●	●													
200 W			●													
400 W			●	●	●	●	●									
750 W					●	●	●	●	●	●						
1 kW						●	●	●	●	●	●					
1.5 kW							●	●	●	●	●					
2.2 kW											●					
3.75 kW											●	●	●			
5.5 kW												●	●	●		
7.5 kW													●			
11 kW														●		
15 kW														●	●	
22 kW														●	●	●
30kW														●	●	●

雙段 2-Stage

Model	ST	-	-	65、75	75	-	110	140	-	-	170	-	210	240	280		
	FT	-	60	70	-	-	-	-	-	-	-	-	-	-	-		
	HY	-	-	55	75	-	90	115	-	-	130	140	160	190	230、270		
	PW	-	30	40	-	50	-	-	60、70	-	-	-	-	-	-	-	
	GT	60	-	-	-	85、110	135	-	-	-	170	200	-	-	-	-	
Power	Input Bore	8	8	8	11	14	14	16	19	19	22	28	28	35	42	38	
		8	9	9	14	14	16	19	19	24	24	28	32	35	38	48	42
100 W	●	●	●														
200 W			●	●													
400 W			●	●	●	●	●										
750 W				●		●	●	●	●								
1 kW							●	●	●	●							
1.5 kW								●	●	●							
2.2 kW											●	●	●				
3.75 kW											●	●	●	●			
5.5 kW												●	●	●			●
7.5 kW													●	●			●
11 kW															●		●
15 kW															●		●
22 kW															●		●
30 kW															●		●