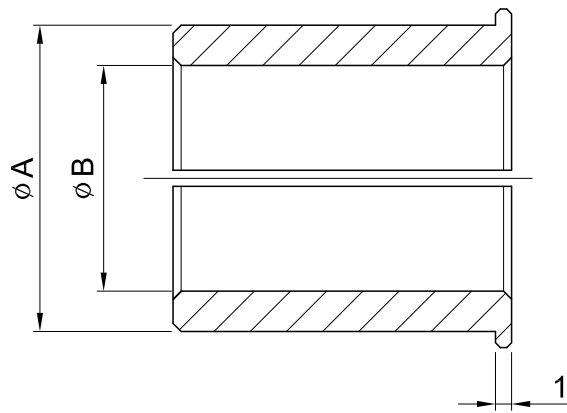


Bushing

軸套



軸套內徑為所使用伺服馬達的輸出軸軸徑。
 下表中沒有的情況下需要插入軸套，在您所使用的輸出軸軸徑的近似值中選擇大值。
 For motor shaft diameters not listed, gearboxes will be supplied with a bush to suit.
 The bore sizes may be supplied as a larger bore with a bush.

連接軸 孔徑 Shaft Bore øA 軸套 孔徑 Bushing Bore øB	8	11	14	19	22	24	28	32	35
6	●	●							
6.35	●								
8		●							
9		●							
10			●						
11			●						
12			●						
12.7			●						
14				●					
15.85				●					
16				●		●	●		
19					●	●	●		
22						●	●	●	
24							●		●
28								●	●
32									●