

BGT



■ 實際減速比對照表 Actual Ratio Table

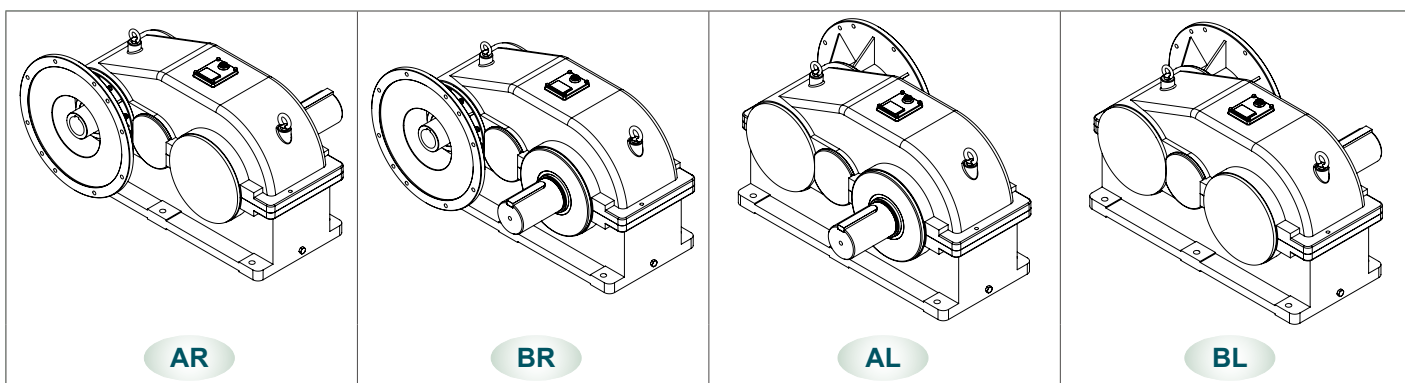
| 型號 Model | 功率 Power HP (4P) | 減速比 Ratio | 實際減速比 Actual Ratio |
|-------------|------------------------|--------------|-----------------------|
| 150 | 75 / 100 | 15 | 14.36 |
| | | 20 | 20.8 |
| | | 30 | 29.36 |
| | 125 | 10 | 10.147 |
| | | 20 | 20.8 |
| | | 30 | 29.36 |
| 150 | 10 | 10.147 | |
| | 20 | 20.45 | |
| | 30 | 29.36 | |

Indication of Model Numbers

機種型號表示

| BGT | 150 | - 20 - | 125 | M | - A | R |
|--------------|-------------|----------------------|---|---|-----------------------------------|---|
| 減速機型 Type | 型號 Model | 減速比 Ratio | 馬力 Horse Power | 入力表示 Input | 安裝方向 Installation Direction | 軸向 Shaft Direction |
| BGT | 150 | 10 15 20 30 | 75HP 100HP 125HP 150HP (4P) | M: 馬達直結式 Motor Direct-Coupling D: 入力軸式 Input Shaft B: 入力法蘭式 Input Flange | A B | R: 右軸 Right Shaft L: 左軸 Left Shaft |

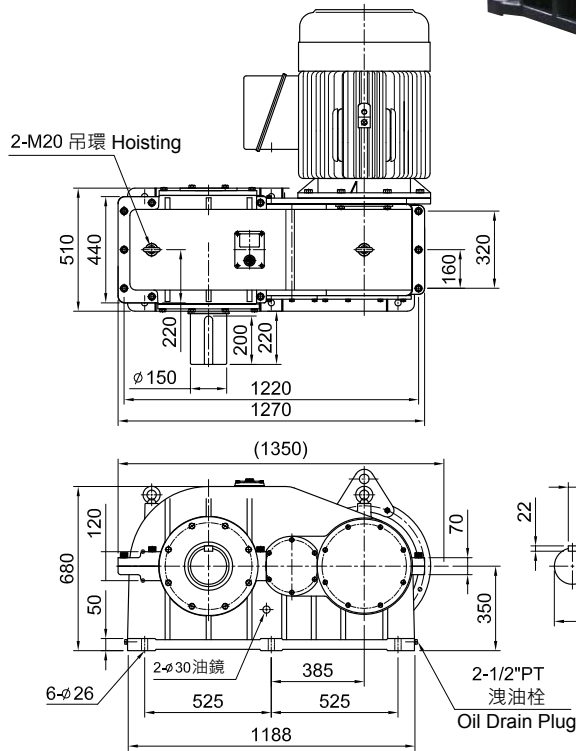
■ 安裝方向 Installation Direction



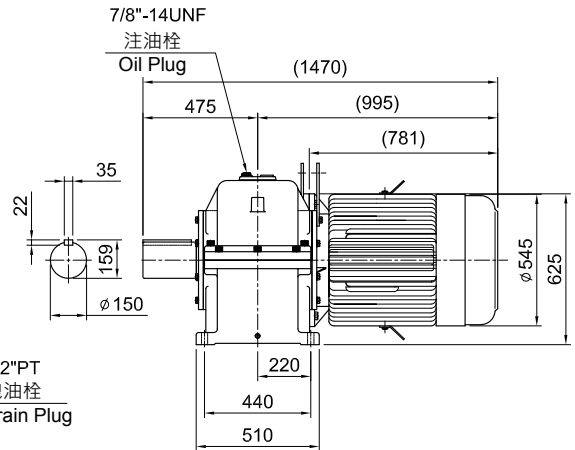
MODEL : BGT150 M

RATIO : 10, 15, 20, 30

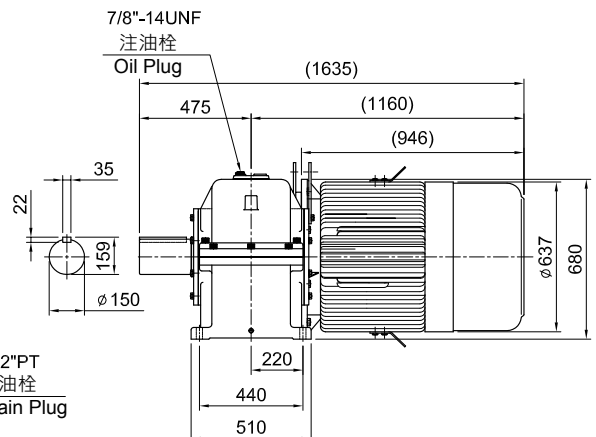
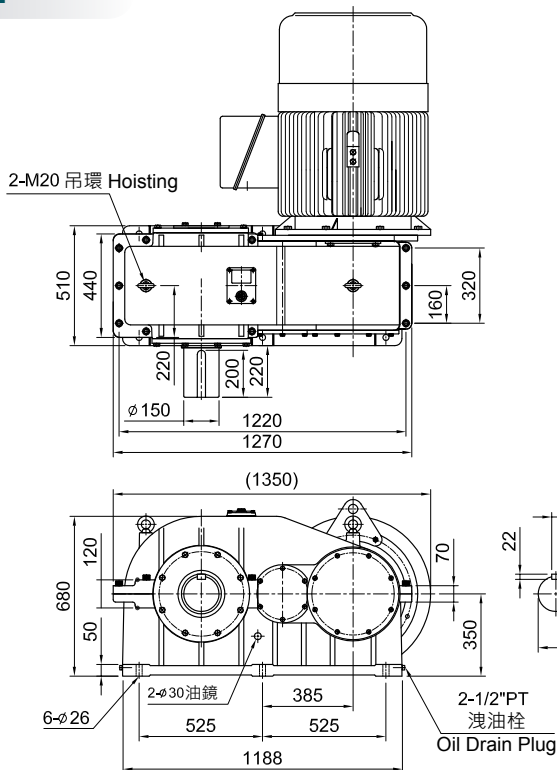
125HP x 4P



◆ 大型馬達 (75HP、100HP、125HP、150HP) 軸心處若有排油孔，會產生漏油現象，建議使用 BGT150 B 自裝式或 BGT150 D 雙軸式。



150HP x 4P



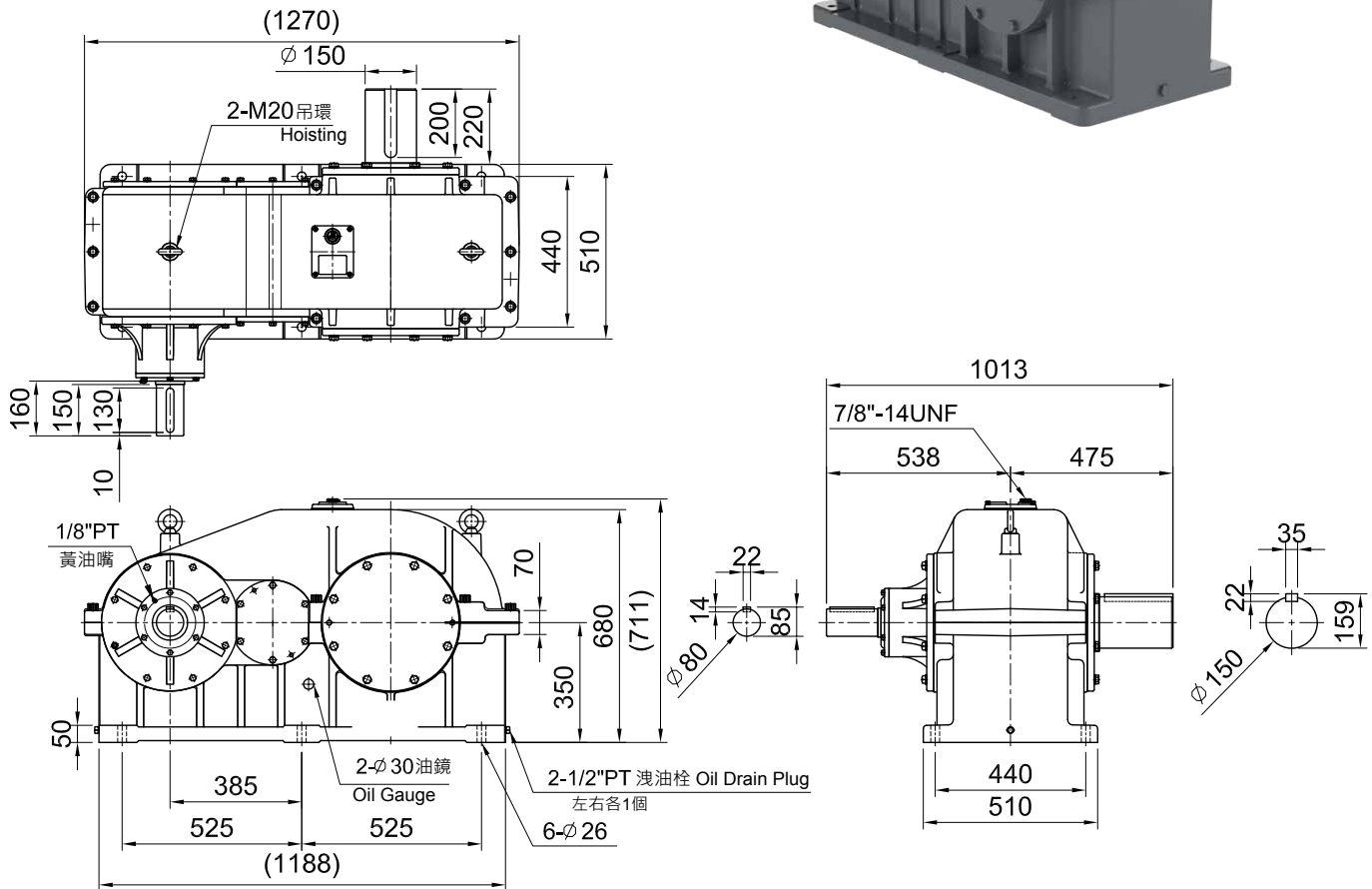
GEARBOX SERIES

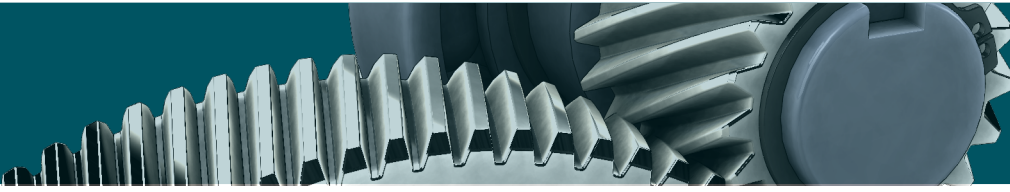
大型齒箱系列

MODEL : BGT150 □ D

RATIO: 10, 15, 20, 30

馬力 (HP): 75, 100, 125, 150

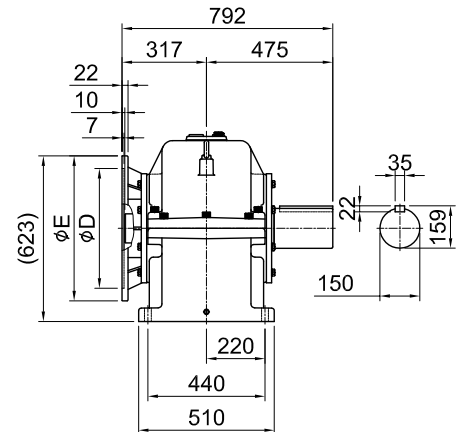
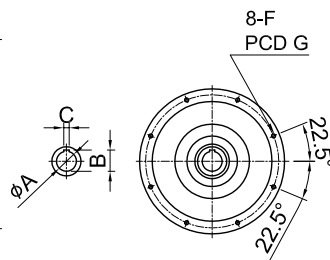
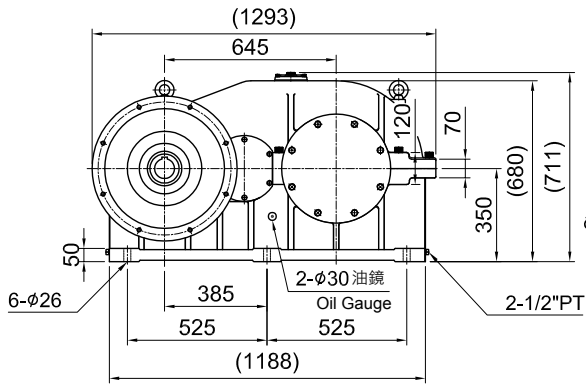
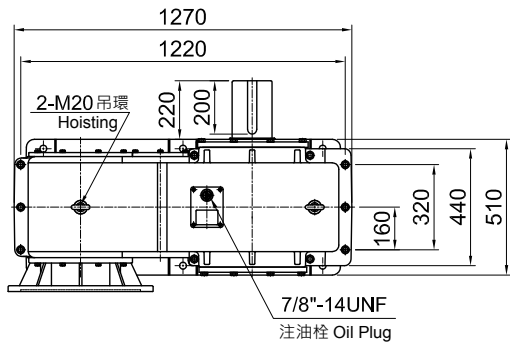




MODEL : BGT150 B

RATIO : 10, 15, 20, 30

馬力 (HP) : 75, 100, 125, 150



unit: mm

| 馬力 HP | A | B | C | D | E | F | G | 重量 Weight (kg) |
|----------|----|------|----|-----|-----|-----|-----|----------------------|
| 75 | 65 | 69.3 | 18 | 450 | 545 | M16 | 500 | |
| 100 | 75 | 79.9 | 20 | 450 | 545 | M16 | 500 | |
| 125 | 75 | 79.9 | 20 | 450 | 545 | M16 | 500 | |
| 150 | 85 | 90.4 | 22 | 550 | 645 | M20 | 600 | |