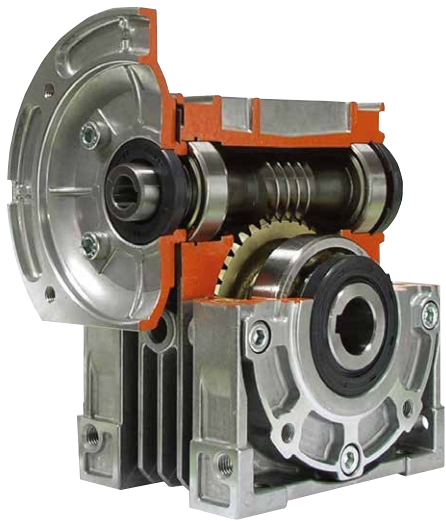


# Aluminum Alloy Worm Reducer

## Features of NE Series

### NE 系列產品特性



NE 系列鋁合金蝸輪減速機，是本公司原有 E 系列的基礎上開發而成的新一代產品，機體用優質的鋁合金壓鑄成形，體積小、散熱快、表面經皮膜處理不生鏽，美觀耐用。蝸桿使用鉻鉬合金鋼 (SCM415)，經滲碳熱處理及研磨，傳動平穩，噪音小、輸出扭矩大，可適應全方位安裝。

The NE series aluminum alloy worm reducers are a new generation of products launched on the basis of the E Series products available in LI MING. The compact aluminum alloy extruded body features good dissipation. The surface undergoing electrotype is aesthetic and stainless. The worm shaft is made of Chromium-Molybdenum alloy steel (SCM415). After acieration and polishing, the worm shaft delivers smooth transmission in minimum noise and maximum torque. Making it apt for all-purpose installations.

## Indication of Model Numbers

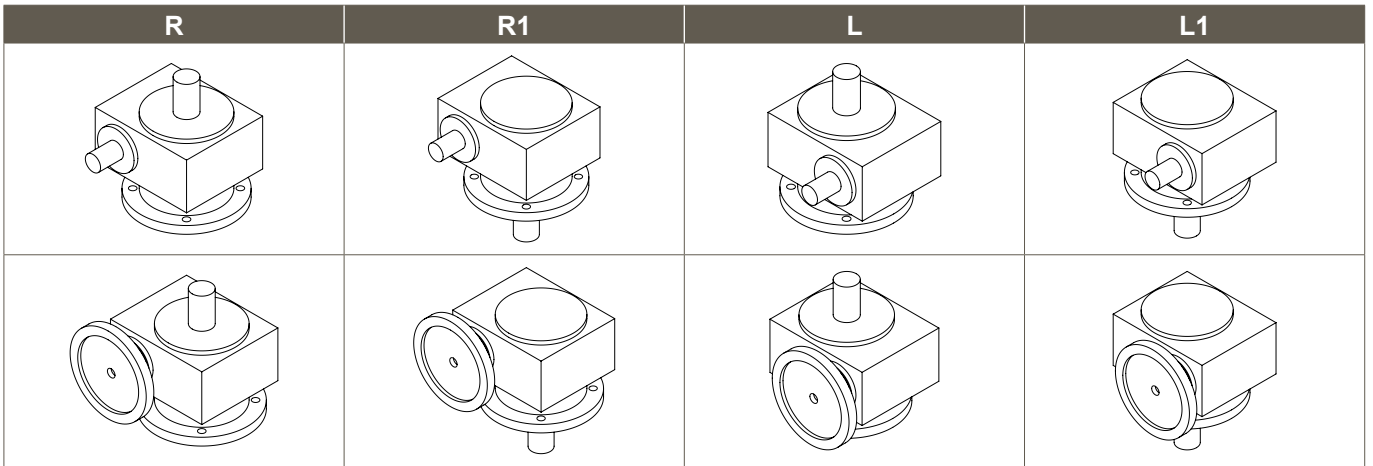
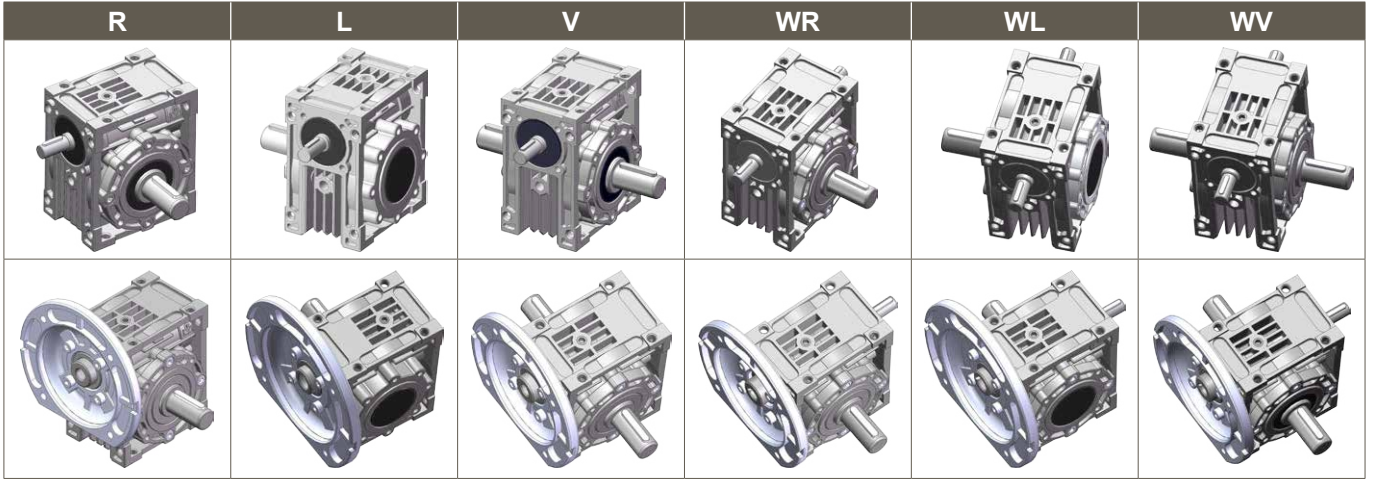
### 機種型號表示

NE	50	10	1	R
減速機型 Type	型號 Model	減速比 Ratio	馬力 Horse Power	軸向 Shaft Direction
NE	30	1/5	40W	R
NEO	40	1/10	60W	L
NEM	50	1/15	90W	V
NEOM	60	1/20	1/4HP	WR
NEF	70	1/30	1/2HP	WL
NEOF		1/40	1HP	WV
NEFM		1/50	2HP	
NEOFM		1/60		
NEH		※1/25		
NEHM		※1/45		
NEOH		※1/80		
NEOHM		※1/100		

Note:

- ※ 特殊品。 ※ means special specification.
- 有些型號之減速比非正整數。 Some ratios are not positive integer.

### 軸向 Shaft Direction



- R : 右軸 (腳座貼地面·輸入端面向自己·此時輸出端位於右側)
- L : 左軸 (腳座貼地面·輸入端面向自己·此時輸出端位於左側)
- V : 單入力軸雙出力軸
- W : 雙入力軸單出力軸
- WV : 雙入力軸和雙出力軸
- S : 特殊軸 (訂貨時請註明或附圖面)

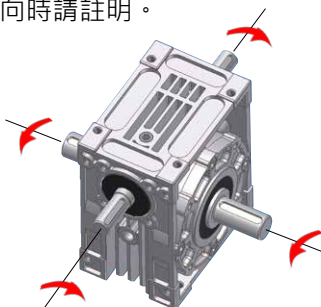
- R : Right Shaft (when facing input shaft and foot on the ground, output shaft is on the right)
- L : Left Shaft (when facing input shaft and foot on the ground, output shaft is on the left)
- V : Single Input Shaft & Double Output Shaft
- W : Double Input Shaft & Single Output Shaft
- WV : Double Input Shaft & Single Output Shaft
- S : Special shaft (Please specify your need clearly or attach drawing)

### 旋向 Rotary Direction

設計上蝸桿使用右旋牙·如入力軸以順時針方向旋轉時·出力軸方向旋轉·請參考圖 1 圖 2·如需特殊旋向時請註明·

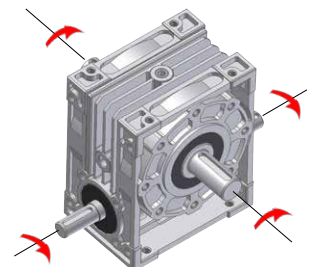
upper worm for right-directed thread, so the input shaft is rotating clockwise and the output shaft see image 1 and image 2 ; for any rotating direction required, be sure to specify it.

<圖 1>  
<Image 1>



旋轉方向  
Rotation Direction

<圖 2>  
<Image 2>

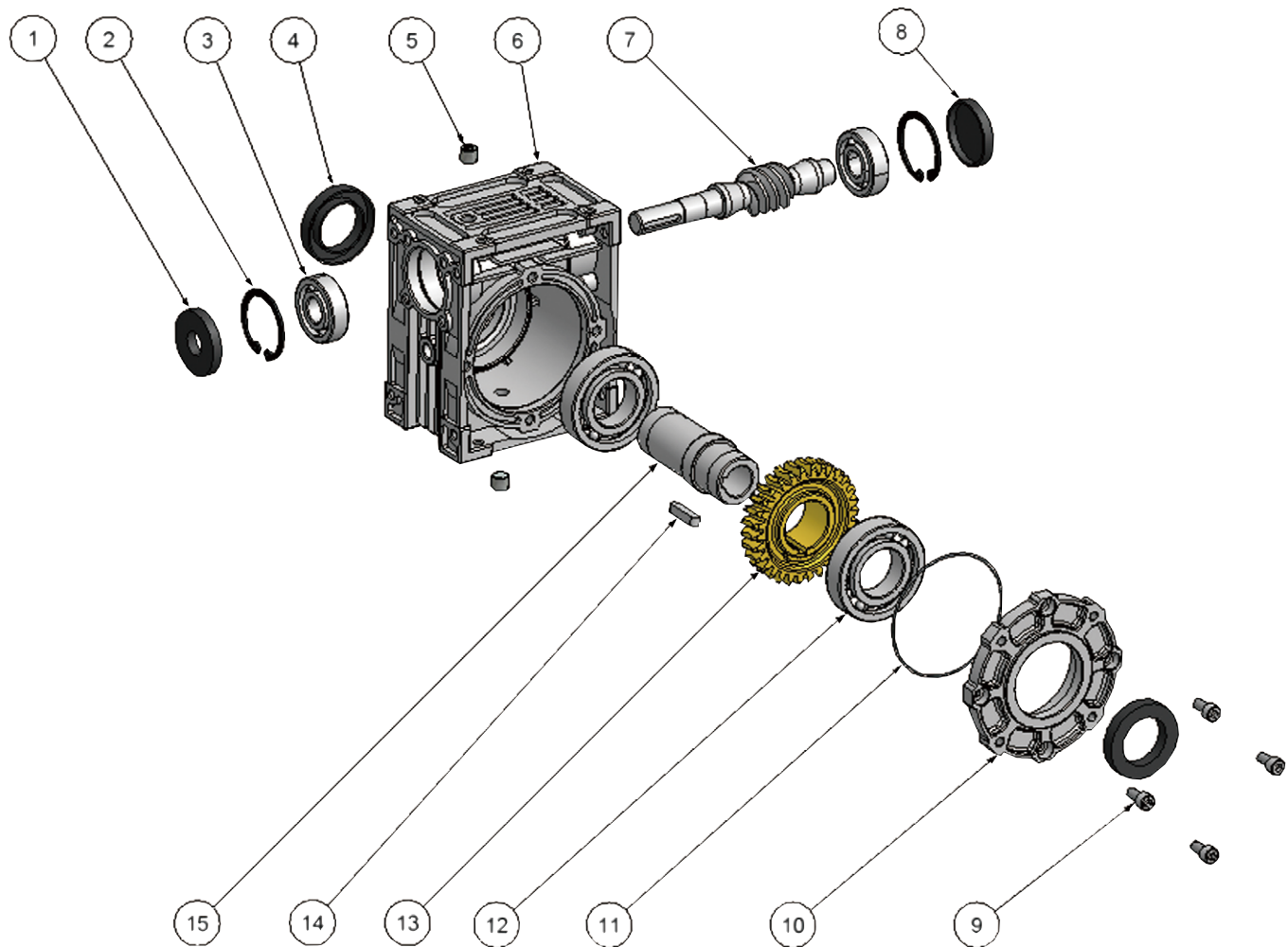


# ALUMINUM ALLOY WORM REDUCER SERIES

## 鋁合金蝸輪減速機系列

### 分解系統圖 System Drawing

MODEL : NEO



NO.	零件名稱	Name of Parts	NO.	零件名稱	Name of Parts
1	油封 SC	Oil Seal SC	9	六角承窩頭螺絲	Hex Screw
2	R 扣環	Snap Ring	10	出力軸蓋	Output Shaft Cover
3	滾珠軸承 ZZ	Ball Bearing ZZ	11	O 形環	O-Ring
4	油封 TC	Oil Seal TC	12	滾珠軸承	Ball Bearing
5	油栓 PT	Plug PT	13	蝸輪	Worm Wheel
6	蝸輪箱	Outer Shell	14	雙圓鍵	Key
7	蝸桿	Worm Shaft	15	出力軸	Output Shaft
8	密式油封	Seal			

#### 材質說明:

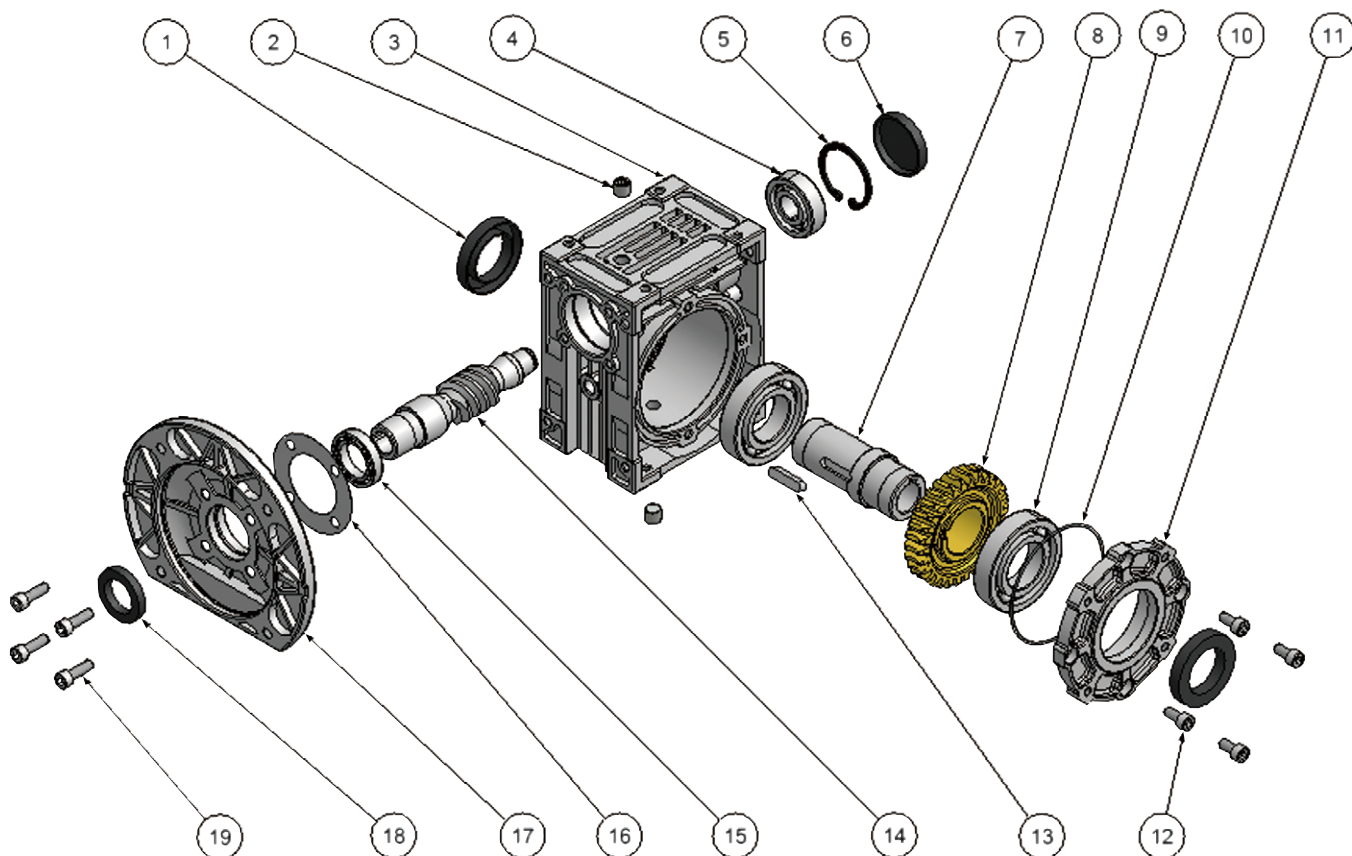
1. 蝸輪箱、出力軸蓋：壓鑄鋁 ALADC-12，本體一體壓鑄，強度強、重量輕、外型美觀、散熱好。
2. 出力軸：S45C 中碳鋼，CNC 車床精密加工研磨。
3. 蝸輪：鋁青銅 ALBC3，CNC 車床精密加工，成形專用刀具切削磨擦係數小、壽命長。
4. 蝸桿：SCM415 綠十字，CNC 車床精密加工，精密滾齒機切削，滲碳後經齒形研磨，齒形正確齒面平滑，無雜音、壽命長。

#### Material :

1. Outer shell & output shaft cover : Cast aluminum ALADC-12, alone-piece cast, rigid, lightweight, aesthetic and sound dissipation.
2. Output shaft : S45C medium carbon steel, CNC lathe machining.
3. Worm wheel : ALBC3, CNC precision lathe machining, shaping cutting blade of minimum cutting coefficient and extended service life.
4. Worm shaft : SCM415 green cross, CNC precision lathe machining, gear grinding after cutting and carburizing with precision gear grinding, for sound gear shape of smooth surface, free of noise and extended service life.

分解系統圖 System Drawing

MODEL : NEOM



NO.	零件名稱	Name of Parts	NO.	零件名稱	Name of Parts
1	油封 TC	Oil Seal TC	11	出力軸蓋	Output Shaft Cover
2	油栓 PT	Plug PT	12	六角承窩頭螺絲	Hex Screw
3	蝸輪箱	Outer Shell	13	雙圓鍵	Key
4	滾珠軸承 ZZ	Ball Bearing ZZ	14	蝸桿	Worm Shaft
5	R 扣環	Snap Ring	15	滾珠軸承 ZZ	Ball Bearing ZZ
6	密式油封	Seal	16	非石棉墊片	Asbestos Free Gasket
7	出力軸	Output Shaft	17	馬達連結盤	Motor Flange
8	蝸輪	Worm Wheel	18	油封 SC	Oil Seal SC
9	滾珠軸承	Ball Bearing	19	六角承窩頭螺絲	Hex Screw
10	O 形環	O-Ring			

材質說明:

- 蝸輪箱、出力軸蓋：壓鑄鋁 ALADC-12，本體一體壓鑄，強度強、重量輕、外型美觀、散熱好。
- 出力軸：S45C 中碳鋼，CNC 車床精密加工研磨。
- 蝸輪：鋁青銅 ALBC3，CNC 車床精密加工，成形專用刀具切削磨擦係數小、壽命長。
- 蝸桿：SCM415 綠十字，CNC 車床精密加工，精密滾齒機切削，滲碳後經齒形研磨，齒形正確齒面平滑，無雜音、壽命長。

Material :

- Outer shell & output shaft cover : Cast aluminum ALADC-12, alone-piece cast, rigid, lightweight, aeathtic and sound dissipation.
- Output shfat : S45C medium carbon steel, CNC lathe machining.
- Worm wheel : ALBC3, CNC precision lathe machining, shaping cutting blade of minimum cutting coefficient and extended service life.
- Worm shaft : SCM415 green cross, CNC precision lathe machining, gear grinding after cutting and carburizing with precision gear grinding, for sound gear shape of smooth surface, free of noise and extended service life.

# ALUMINUM ALLOY WORM REDUCER SERIES

## 鋁合金蝸輪減速機系列

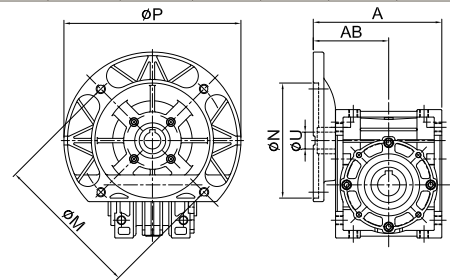
### 減速機參數 Reducers Parameter

馬達 Motor : 4P/60Hz 輸入轉速 Input R.P.M. = 1700 RPM

(安全係數 1.0 以下為輕負荷。The reducer is used for light loading when SF below 1.0.)

OR= 輸出轉速 Output R.P.M. (RPM) . IH= 輸入馬力 Input HP (kW) . OT= 輸出扭力 Output Torque (Kg-m) . SF= 安全係數 Safety Factor

型號 Mode	減速比 Ratio	5		10		15		20		30		40		50		60		
		OR	340		170		113		85		56		42		34		28	
		IH	OT	SF	OT	SF	OT	SF	OT	SF	OT	SF	OT	SF	OT	SF	OT	SF
30	0.04	0.09	8.8	0.16	5.4	0.24	4.8	0.28	3.4	1.42	3.2	0.45	2.2	0.6	1.6	0.76	1.3	
	0.06	0.13	6.0	0.25	3.6	0.40	3.2	0.43	2.3	0.63	2.1	0.68	1.4	1.02	1.1	1.12	0.9	
	0.09	0.22	4.0	0.43	2.4	0.61	2.1	0.74	1.5	1.05	1.4	1.16	1.0	-	-	-	-	
40	0.18	0.47	4.4	0.90	2.7	1.32	2.3	1.60	1.6	2.31	1.4	2.81	1.1	3.46	0.9	3.65	0.7	
	0.37	0.94	2.2	1.80	1.4	2.64	1.2	3.20	1.0	4.62	0.7	-	-	-	-	-	-	
50	0.18	0.48	6.8	0.94	5.2	1.35	3.6	1.74	2.8	2.39	2.2	2.98	1.7	3.41	1.3	3.84	1.1	
	0.37	0.96	3.3	1.88	2.5	2.70	1.8	3.48	1.3	4.78	1.1	5.96	0.9	6.82	0.6	-	-	
	0.75	1.92	1.6	3.76	1.3	5.41	1.0	6.97	0.7	9.57	0.5	-	-	-	-	-	-	
60	0.37	0.96	4.8	1.89	4.0	2.74	2.8	3.48	2.1	4.85	1.6	6.04	1.3	7.56	1.1	7.93	0.9	
	0.75	1.93	2.3	3.78	2.0	5.41	1.4	6.97	1.1	9.70	0.8	12.0	0.6	15.1	0.5	-	-	
	1.5	3.86	1.2	7.56	1.0	10.9	0.7	-	-	-	-	-	-	-	-	-	-	
70	0.37	0.95	7.0	1.84	5.1	2.67	3.4	3.52	3.0	4.77	1.8	6.23	1.6	7.48	1.2	8.73	1.0	
	0.75	1.90	3.4	3.69	2.5	5.35	1.7	7.05	1.5	9.54	0.9	10.9	1.3	14.9	0.6	17.4	0.5	
	1.5	3.81	1.7	7.38	1.3	10.7	0.9	14.1	0.7	19.0	0.4	24.9	0.3	-	-	-	-	

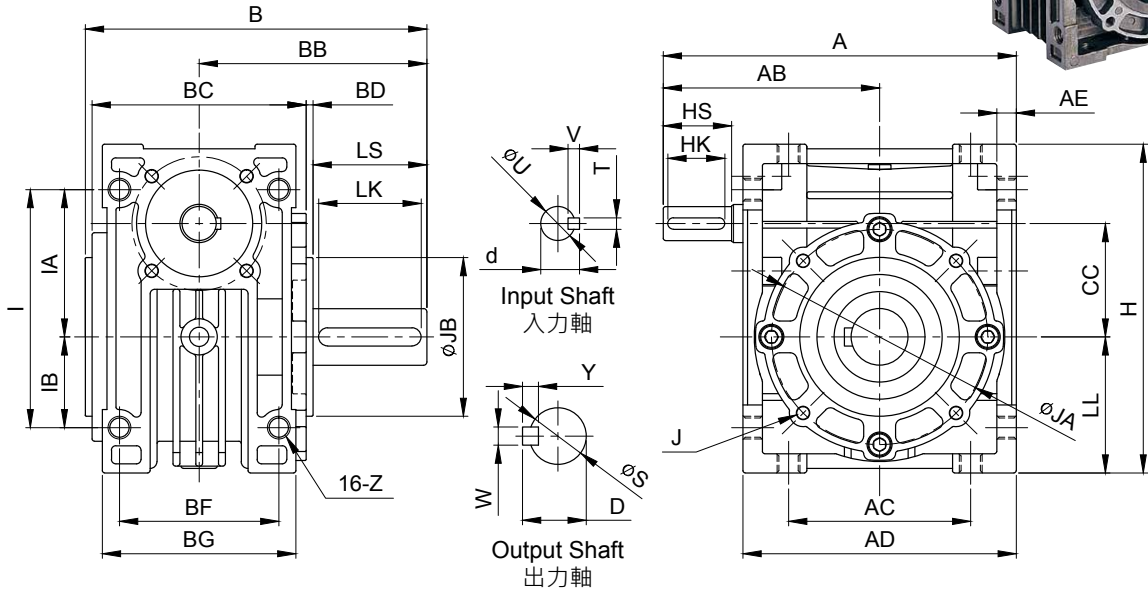
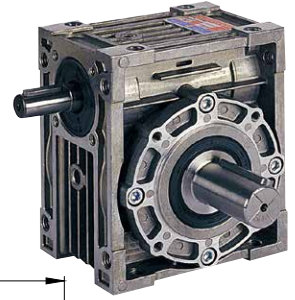


### 馬達規格選配 Selection of Motor Size

unit: mm

型號 Model	安裝規格 Size							減速比 Ratio									
	法蘭型號 Flange Model	馬力 HP	N	M	P	A	AB	5	10	15	20	30	40	50	60	80	100
								馬達軸心尺寸 Motor Shaft Dimension ØU									
30	40W·60W		83	104	□ 90	98	58	11	11	11	11	11	11	11	11		
	90W	1/8	83	104	□ 90	98	58	11	11	11	11	11	11				
	63B14	1/4	60	75	90	98	58	11	11	11	11	11					
	63B	1/4	95	115	140	98	58	11	11	11	11	11					
40	63B14	1/4	60	75	90	124	73	11	11	11	11	11	11	11	11	11	11
	63B	1/4	95	115	140	124	73	11	11	11	11	11	11	11	11	11	11
	63	1/4	110	130	160	124	73	11	11	11	11	11	11	11	11	11	11
	71B14	1/2	70	85	105	124	73	14	14	14	14	14					
50	71	1/2	110	130	160	124	73	14	14	14	14	14					
	56C	1/2	114.3	149.3	166	137	86	15.875	15.875	15.875	15.875	15.875					
	63B	1/4	95	115	140	141	81	11	11	11	11	11	11	11	11	11	11
	63	1/4	110	130	160	141	81	11	11	11	11	11	11	11	11	11	11
	71B14	1/2	70	85	105	141	81	14	14	14	14	14	14	14	14		
	71	1/2	110	130	160	141	81	14	14	14	14	14	14	14			
60	80B14	1	80	100	120	148	88	19	19	19	19	19					
	80	1	130	165	200	148	88	19	19	19	19	19					
	90L	2	130	165	200	174	101	24	24	24							
	56C	3/4	114.3	149.3	166	183	109	15.875	15.875	15.875	15.875	15.875	15.875	15.875	15.875		
	71	1/2	110	130	160	196	111	14	14	14	14	14	14	14	14	14	14
70	80	1	130	165	200	198	113	19	19	19	19	19	19	19	19		
	90B14	2	95	115	140	198	113	24	24	24	24	24	24				
	90L	2	130	165	200	198	113	24	24	24	24	24	24				
	56C	1	114.3	149.3	166	205	120	15.875	15.875	15.875	15.875	15.875	15.875	15.875	15.875		

MODEL : NE



unit: mm

型號 Model	減速比 Ratio	馬力 HP	A	AB	AC	AD	AE	B	BB	BC	BD	BF	BG	CC	LL	H	I	IA	IB	Z
30	5~60	40W·60W																		
	5~40	90W	105	65	55	80	6	99.5	67.5	60	2	45	58	30	40	98	72	45	27	M6
	5~30	1/4																		
40	5~60	1/4	131	80	70	102	7.5	127	85	80	2	60	72	40	50	122	90	55	35	M8
	5~30	1/2																		
50	5~60	1/4																		
	5~50	1/2	155	95	80	120	8.5	150	100	94	3	70	85	50	60	145	105	65	40	M10
60	5~30	1																		
	5~60	1/2	193	120	100	146	10	159	105	102	3	85	102	60	75	180	136	83	53	M10
70	5~50	1																		
	5~60	1/2	225	140	120	170	12	187	125	118	3	90	110	70	85	200	150	90	60	M10
	5~40	2																		

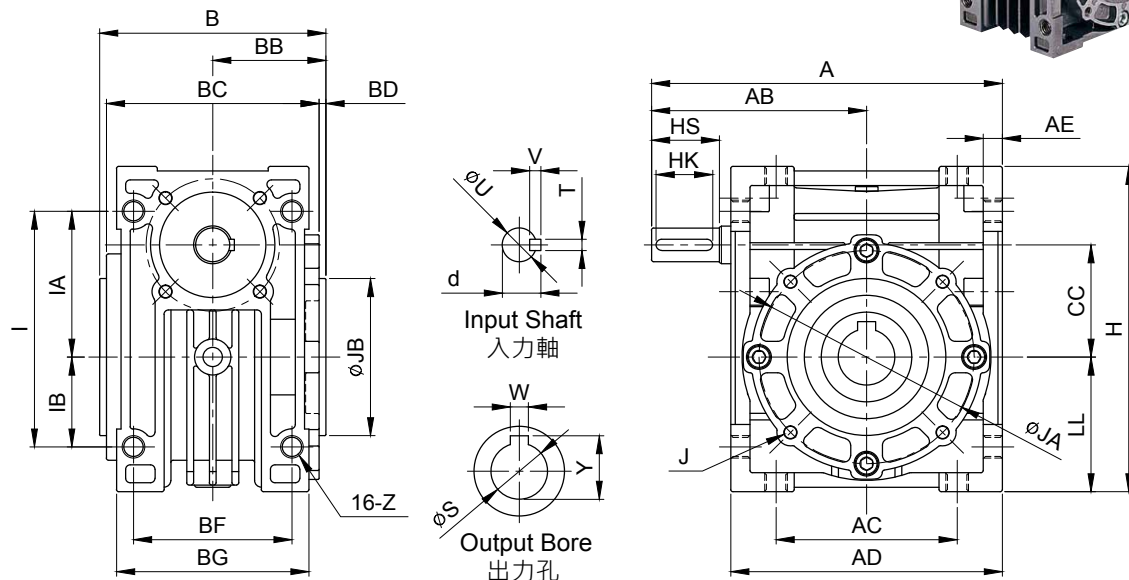
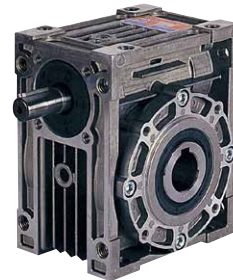
型號 Model	減速比 Ratio	馬力 HP	入力軸 Input Shaft				出力軸 Output Shaft							重量 Weight (kg)						
			HS	U	d	TxVxHK	LS	S	D	WxYxLK	JA	JB	Jx 牙深 Deep							
30	5~60	40W·60W																		
	5~40	90W	20	11	12.5	4x4x16	35	16	18	5x5x30	65	55	8-M6-9	1.28						
	5~30	1/4																		
40	5~60	1/4	25	12	13.5	4x4x20	40	20	22.5	6x6x35	77	60	12-M6-9	2.46						
	5~30	1/2																		
50	5~60	1/4																		
	5~50	1/2	30	15	17	5x5x25	50	25	28	8x7x45	95	70	12-M6-9	4.13						
60	5~30	1																		
	5~60	1/2	40	18	20.5	6x6x35	50	25	28	8x7x45	120	80	12-M8-12	6.35						
70	5~50	1																		
	5~60	1/2	45	22	25	7x7x40	60	30	33	8x7x55	140	90	12-M10-15	9.9						
	5~40	2																		

選配馬力時，請參考「減速機參數」(第15頁)。 Please refer to page 15 "Reducers Parameter".

# ALUMINUM ALLOY WORM REDUCER SERIES

## 鋁合金蝸輪減速機系列

MODEL : NEO



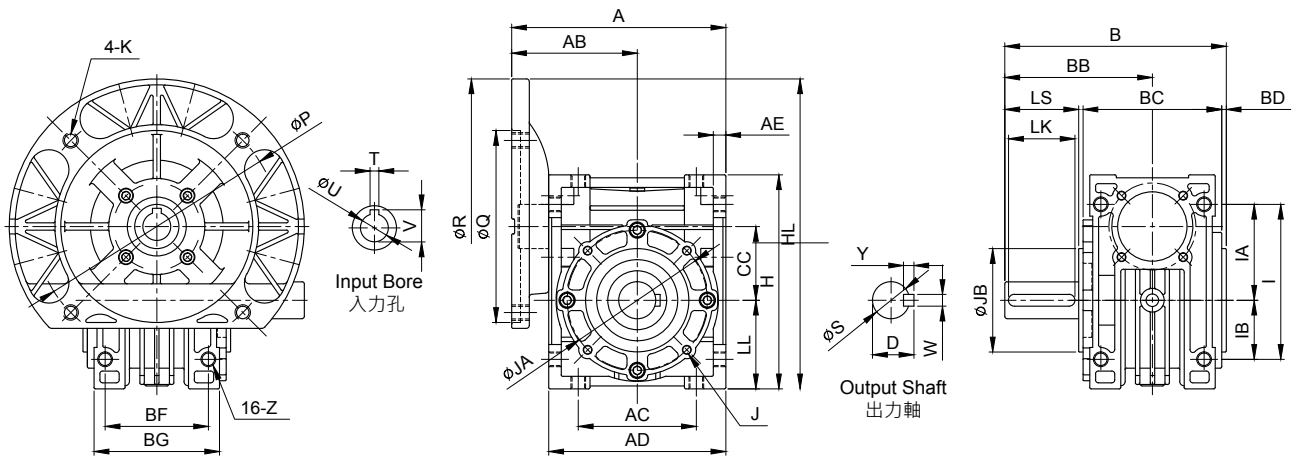
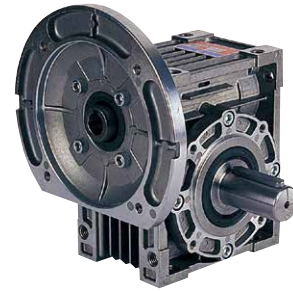
unit: mm

型號 Model	減速比 Ratio	馬力 HP	A	AB	AC	AD	AE	B	BB	BC	BD	BF	BG	CC	LL	H	I	IA	IB	Z
30	5~60	40W·60W	105	65	55	80	6	65	32.5	60	2	45	58	30	40	98	72	45	27	M6
	5~40	90W																		
	5~30	1/4																		
40	5~60	1/4	131	80	70	102	7.5	88	44	80	2	60	72	40	50	122	90	55	35	M8
	5~30	1/2																		
50	5~60	1/4	155	95	80	120	8.5	98	49	94	3	70	85	50	60	145	105	65	40	M10
	5~50	1/2																		
	5~30	1																		
60	5~60	1/2	193	120	100	146	10	108	54	102	3	85	102	60	75	180	136	83	53	M10
	5~50	1																		
	5~15	2																		
70	5~60	1/2	225	140	120	170	12	128	64	118	3	90	110	70	85	200	150	90	60	M10
	5~60	1																		
	5~40	2																		

型號 Model	減速比 Ratio	馬力 HP	入力軸 Input Shaft				出力孔 Output Bore						重量 Weight (kg)
			HS	U	d	TxVxHK	W	S	Y	JA	JB	J×牙深 Deep	
30	5~60	40W·60W	20	11	12.5	4x4x16	5	14	16.3	65	55	8-M6-9	1.16
	5~40	90W											
	5~30	1/4											
40	5~60	1/4	25	12	13.5	4x4x20	6	20	22.8	77	60	12-M6-9	2.2
	5~30	1/2											
50	5~60	1/4	30	15	17	5x5x25	8	25	28.3	95	70	12-M6-9	3.59
	5~50	1/2											
	5~30	1											
60	5~60	1/2	40	18	20.5	6x6x35	8	25	28.3	120	80	12-M8-12	5.8
	5~50	1											
	5~15	2											
70	5~60	1/2	45	22	25	7x7x40	8	30	33.3	140	90	12-M10-15	9.04
	5~60	1											
	5~40	2											

選配馬力時，請參考「減速機參數」(第15頁)。 Please refer to page I5 "Reducers Parameter".

**MODEL : NEM**



unit: mm

型號 Model	減速比 Ratio	馬力 HP	A	AB	AC	AD	AE	B	BB	BC	BD	BF	BG	CC	LL	H	HL	I	IA	IB	Z
30	5~60	40W·60W	98	58												115					
	5~40	90W	98	58	55	80	6	99.5	67.5	60	2	45	58	30	40	98	115	72	45	27	M6
	5~30	63B	100	60												140					
40	5~60	63B	125	74	70	102	7.5	127	85	80	2	60	72	40	50	122	170	90	55	35	M8
	5~30	1/2														190					
50	5~60	1/4	142	82												190					
	5~50	1/2	142	82	80	120	8.5	150	100	94	3	70	85	50	60	145	190	105	65	40	M10
	5~30	1	148	88												210					
60	5~60	1/2	167	94												215					
	5~50	1	174	101	100	146	10	159	105	102	3	85	102	60	75	180	235	136	83	53	M10
	5~15	2	174	101												235					
70	5~60	1/2	196	111												235					
	5~60	1	198	113	120	170	12	187	125	118	3	90	110	70	85	200	255	150	90	60	M10
	5~40	2	198	113												255					

型號 Model	減速比 Ratio	馬力 HP	馬達盤及入力孔 Motor Flange & Input Bore							出力軸 Output Shaft							重量 Weight (kg)					
			P	Q	R	K	V	T	U	LS	S	D	WxYxLK	JA	JB	Jx 牙深 Deep						
30	5~60	40W·60W	104	83	□ 90	M6																
	5~40	90W	104	83	□ 90	M6	12.7	4	11	35	16	18	5x5x30	65	55	8-M6-9					1.57	
	5~30	63B	115	95	140	M8																
40	5~60	63B	115	95	140	M8	12.7	4	11													
	5~30	1/2	130	110	160	M8	16.3	5	14	40	20	22.5	6x6x35	77	60	12-M6-9					2.8	
50	5~60	1/4	130	110	160	M8	12.7	4	11													
	5~50	1/2	130	110	160	M8	16.3	5	14	50	25	28	8x7x45	95	70	12-M6-9					4.4	
	5~30	1	165	130	200	M10	21.8	6	19													
60	5~60	1/2	130	110	160	M8	16.3	5	14													
	5~50	1	165	130	200	M10	21.8	6	19	50	25	28	8x7x45	120	80	12-M8-12					6.6	
	5~15	2	165	130	200	M10	27.3	8	24													
70	5~60	1/2	130	110	160	M8	16.3	5	14													
	5~60	1	165	130	200	M10	21.8	6	19	60	30	33	8x7x55	140	90	12-M10-15					10.37	
	5~40	2	165	130	200	M10	27.3	8	24													

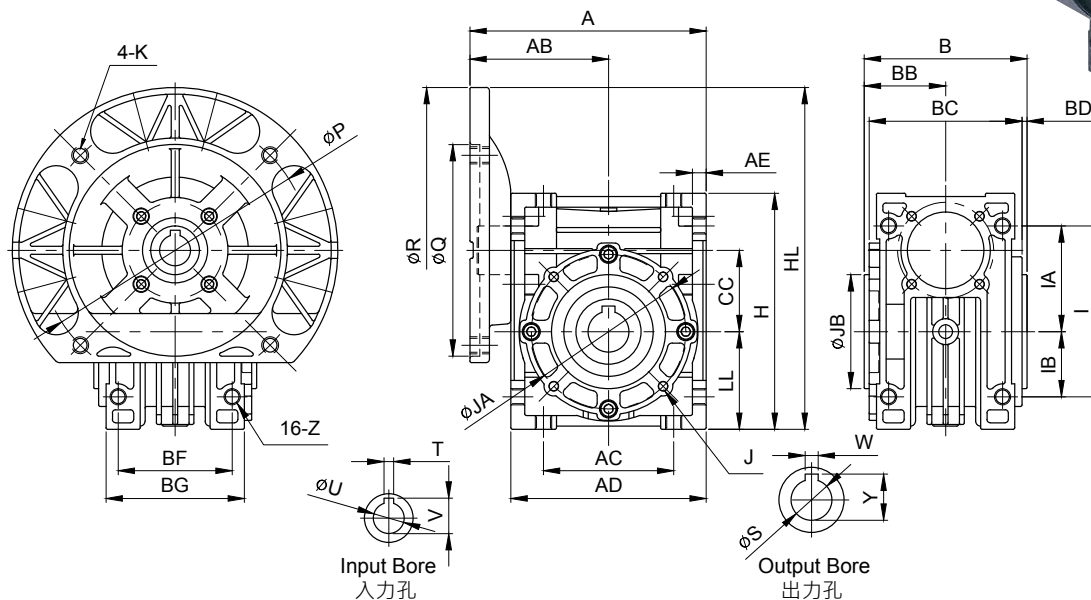
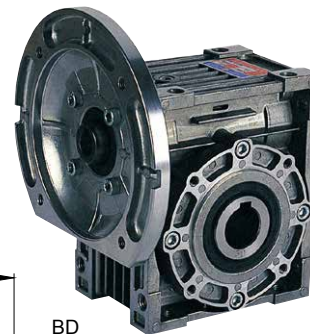
選配馬力時，請參考「減速機參數」(第 15 頁)。 Please refer to page 15 "Reducers Parameter".



# ALUMINUM ALLOY WORM REDUCER SERIES

## 鋁合金蝸輪減速機系列

MODEL : NEOM



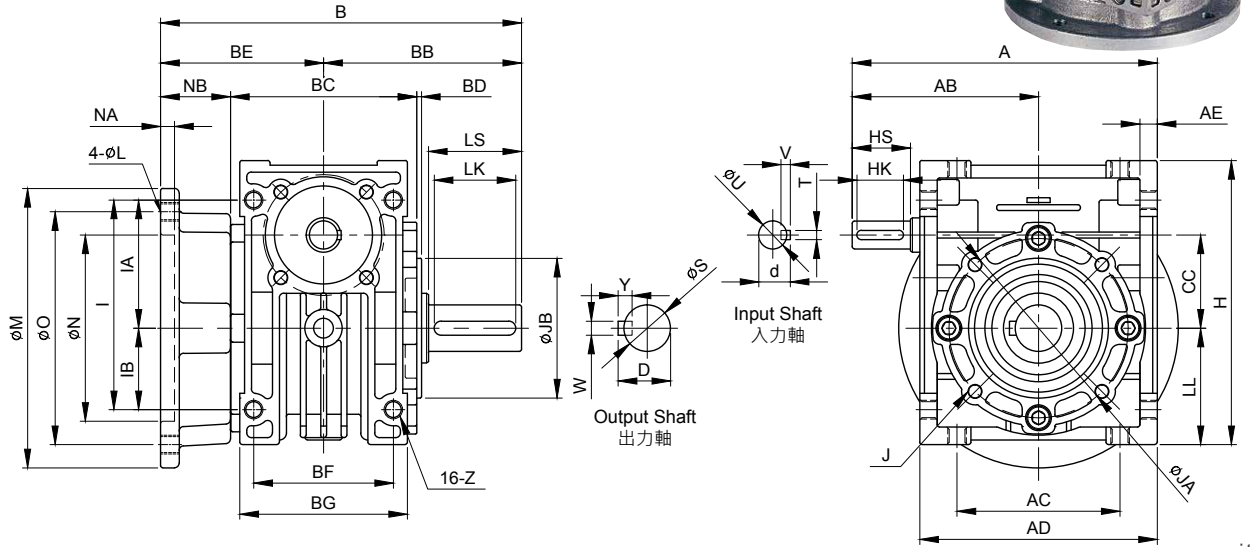
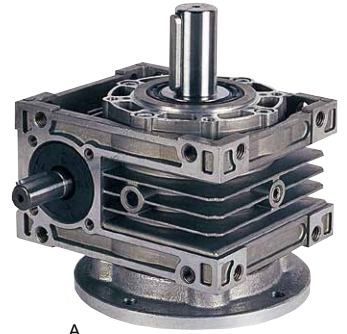
unit: mm

型號 Model	減速比 Ratio	馬力 HP	A	AB	AC	AD	AE	B	BB	BC	BD	BF	BG	CC	LL	H	HL	I	IA	IB	Z
30	5~60	40W·60W	98	58												115					
	5~40	90W	98	58	55	80	6	65	32.5	60	2	45	58	30	40	98	115	72	45	27	M6
	5~30	63B	100	60												140					
40	5~60	63B	125	74	70	102	7.5	88	44	80	2	60	72	40	50	122	170	90	55	35	M8
	5~30	1/2																			
50	5~60	1/4	142	82												190					
	5~50	1/2	142	82	80	120	8.5	98	49	94	3	70	85	50	60	145	190	105	65	40	M10
	5~30	1	148	88												210					
60	5~60	1/2	167	94												215					
	5~50	1	174	101	100	146	10	108	54	102	3	85	102	60	75	180	235	136	83	53	M10
	5~15	2	174	101												235					
70	5~60	1/2	196	111												235					
	5~60	1	198	113	120	170	12	128	64	118	3	90	110	70	85	200	255	150	90	60	M10
	5~40	2	198	113												255					

型號 Model	減速比 Ratio	馬力 HP	馬達盤及入力孔 Motor Flange & Input Bore							出力孔 Output Bore						重量 Weight (kg)						
			P	Q	R	K	V	T	U	W	S	Y	JA	JB	J×牙深 Deep							
30	5~60	40W·60W	104	83	□ 90	M6																
	5~40	90W	104	83	□ 90	M6	12.7	4	11	5	14	16.3	65	55	8-M6-9						1.28	
	5~30	63B	115	95	140	M8																
40	5~60	63B	115	95	140	M8	12.7	4	11													
	5~30	1/2	130	110	160	M8	16.3	5	14	6	20	22.8	77	60	12-M6-9						2.56	
50	5~60	1/4	130	110	160	M8	12.7	4	11													
	5~50	1/2	130	110	160	M8	16.3	5	14	8	25	28.3	95	70	12-M6-9						4.27	
	5~30	1	165	130	200	M10	21.8	6	19													
60	5~60	1/2	130	110	160	M8	16.3	5	14													
	5~50	1	165	130	200	M10	21.8	6	19	8	25	28.3	120	80	12-M8-12						6.41	
	5~15	2	165	130	200	M10	27.3	8	24													
70	5~60	1/2	130	110	160	M8	16.3	5	14													
	5~60	1	165	130	200	M10	21.8	6	19	8	30	33.3	140	90	12-M10-15						9.54	
	5~40	2	165	130	200	M10	27.3	8	24													

選配馬力時，請參考「減速機參數」(第15頁)。 Please refer to page I5 "Reducers Parameter".

MODEL : NEF



unit: mm

型號 Model	減速比 Ratio	馬力 HP	A	AB	AC	AD	AE	B	BE	NB	BB	BC	BD	BF	BG	CC	LL	H	I	IA	IB	Z
30	5~60	40W·60W	105	65	55	80	6	127.5	60	30	67.5	60	2	45	58	30	40	98	72	45	27	M6
	5~40	90W																				
	5~30	1/4																				
40	5~60	1/4	131	80	70	102	7.5	155	70	30	85	80	2	60	72	40	50	122	90	55	35	M8
	5~30	1/2																				
	5~60	1/4																				
50	5~50	1/2	155	95	80	120	8.5	180	80	33	100	94	3	70	85	50	60	145	105	65	40	M10
	5~30	1																				
	5~60	1/2																				
60	5~60	1/2	193	120	100	146	10	205	100	49	105	102	3	85	102	60	75	180	136	83	53	M10
	5~50	1																				
	5~15	2																				
70	5~60	1/2	225	140	120	170	12	225	100	41	125	118	3	90	110	70	85	200	150	90	60	M10
	5~60	1																				
	5~40	2																				

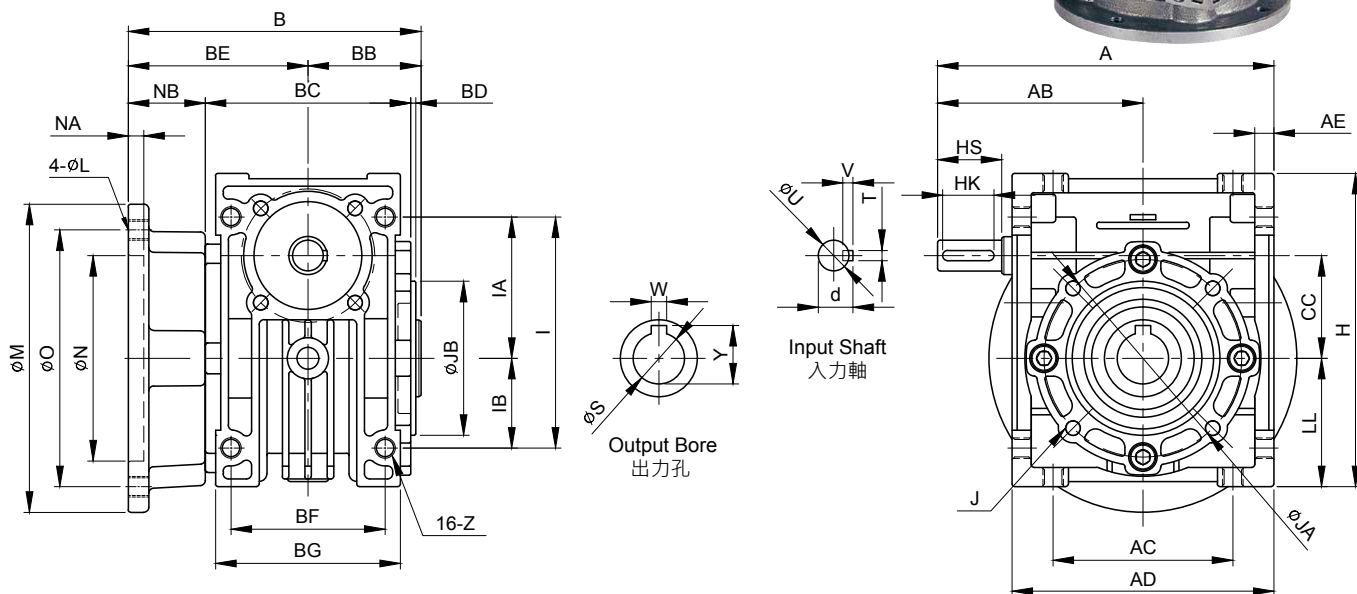
型號 Model	減速比 Ratio	馬力 HP	入力軸 Input Shaft						出力法蘭及出力軸 Output Flange & Output Shaft											重量 Weight (kg)
			HS	U	d	TxVxHK	N	NA	O	M	L	LS	S	D	WxYxLK	JA	JB	J×牙深 Deep		
30	5~60	40W·60W	20	11	12.5	4x4x16	70	5	85	100	M6	35	16	18	5x5x30	65	55	4-M6-9	1.46	
	5~40	90W																		
	5~30	1/4																		
40	5~60	1/4	25	12	13.5	4x4x20	80	6	100	120	M8	40	20	22.5	6x6x35	77	60	4-M6-9	2.7	
	5~30	1/2																		
	5~60	1/4																		
50	5~50	1/2	30	15	17	5x5x25	95	6	120	140	M10	50	25	28	8x7x45	95	70	4-M6-9	4.37	
	5~30	1																		
	5~60	1/2																		
60	5~50	1	40	18	20.5	6x6x35	130	7	160	180	M10	50	25	28	8x7x45	120	80	4-M8-12	6.5	
	5~50	1																		
	5~15	2																		
70	5~60	1/2	45	22	25	7x7x40	150	7	185	210	M12	60	30	33	8x7x55	140	90	4-M10-15	11.1	
	5~60	1																		
	5~40	2																		

選配馬力時，請參考「減速機參數」(第15頁)。 Please refer to page I5 "Reducers Parameter".

# ALUMINUM ALLOY WORM REDUCER SERIES

## 鋁合金蝸輪減速機系列

MODEL : NEOF



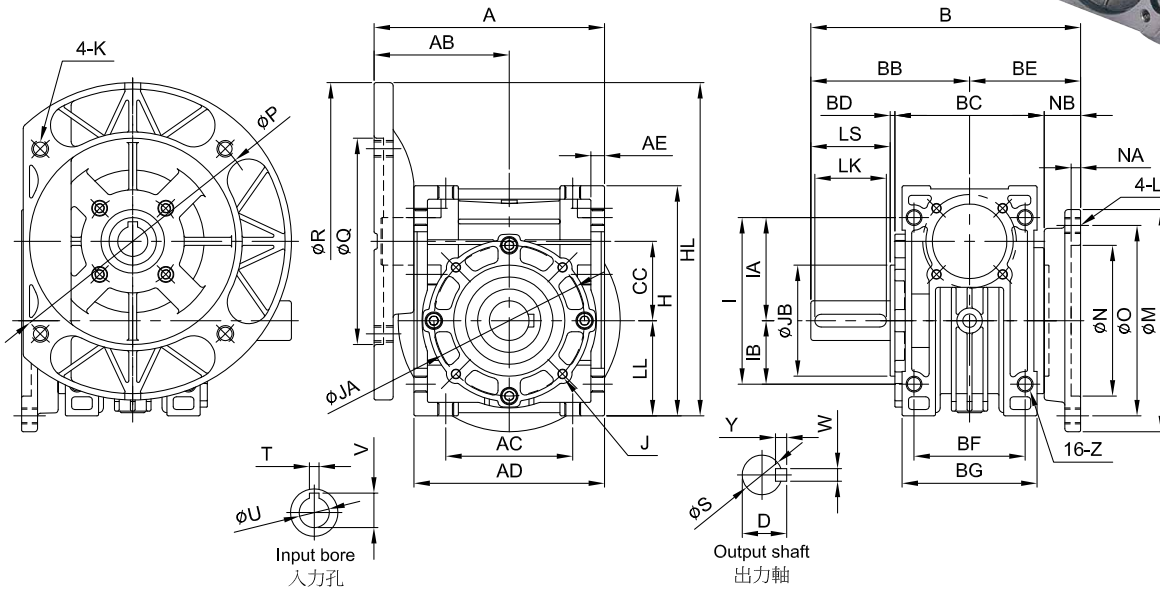
unit: mm

型號 Model	減速比 Ratio	馬力 HP	A	AB	AC	AD	AE	B	BE	NB	BB	BC	BD	BF	BG	CC	LL	H	I	IA	IB	Z
30	5~60	40W・60W	105	65	55	80	6	92.5	60	30	32.5	60	2	45	58	30	40	98	72	45	27	M6
	5~40	90W																				
	5~30	1/4																				
40	5~60	1/4	131	80	70	102	7.5	114	70	30	44	80	2	60	72	40	50	122	90	55	35	M8
	5~30	1/2																				
	5~60	1/4																				
50	5~50	1/2	155	95	80	120	8.5	129	80	33	49	94	3	70	85	50	60	145	105	65	40	M10
	5~30	1																				
	5~60	1/2																				
60	5~50	1	193	120	100	146	10	154	100	49	54	102	3	85	102	60	75	180	136	83	53	M10
	5~15	2																				
	5~60	1/2																				
70	5~60	1	225	140	120	170	12	164	100	41	64	118	3	90	110	70	85	200	150	90	60	M10
	5~40	2																				

型號 Model	減速比 Ratio	馬力 HP	入力軸 Input Shaft				出力法蘭及出力孔 Output Flange & Output Shaft											重量 Weight (kg)
			HS	U	d	TxVxHK	N	NA	O	M	L	W	S	Y	JA	JB	Jx 牙深 Deep	
30	5~60	40W・60W	20	11	12.5	4x4x16	70	5	85	100	M6	5	14	16.3	65	55	4-M6-9	1.33
	5~40	90W																
	5~30	1/4																
40	5~60	1/4	25	12	13.5	4x4x20	80	6	100	120	M8	6	20	22.8	77	60	4-M6-9	2.45
	5~30	1/2																
	5~60	1/4																
50	5~50	1/2	30	15	17	5x5x25	95	6	120	140	M10	8	25	28.3	95	70	4-M6-9	4.02
	5~30	1																
	5~60	1/2																
60	5~50	1	40	18	20.5	6x6x35	130	7	160	180	M10	8	25	28.3	120	80	4-M8-12	6.54
	5~15	2																
	5~60	1/2																
70	5~60	1	45	22	25	7x7x40	150	7	185	210	M12	8	30	33.3	140	90	4-M10-15	9.5
	5~40	2																

選配馬力時，請參考「減速機參數」(第15頁)。Please refer to page I5 "Reducers Parameter".

MODEL : NEFM



unit: mm

型號 Model	減速比 Ratio	馬力 HP	A	AB	AC	AD	AE	B	BE	NB	BB	BC	BD	BF	BG	CC	LL	H	HL	I	IA	IB	Z
30	5~60	40W·60W	98	58														115	115	72	45	27	M6
	5~40	90W	98	58	55	80	6	127.5	60	30	67.5	60	2	45	58	30	40	98	115	140			
	5~30	63B	100	60																			
40	5~60	63B	125	74	70	102	7.5	155	70	30	85	80	2	60	72	40	50	122	170	90	55	35	M8
	5~30	1/2																					
50	5~60	1/4	142	82														190	190	105	65	40	M10
	5~50	1/2	142	82	80	120	8.5	180	80	33	100	94	3	70	85	50	60	145	190	210			
	5~30	1	148	88																			
60	5~60	1/2	167	94														215	215	136	83	53	M10
	5~50	1	174	101	100	146	10	205	100	49	105	102	3	85	102	60	75	180	235	235			
	5~15	2	174	101																			
70	5~60	1/2	196	111														235	235	150	90	60	M10
	5~60	1	198	113	120	170	12	225	100	41	125	118	3	90	110	70	85	200	255	255			
	5~40	2	198	113																			

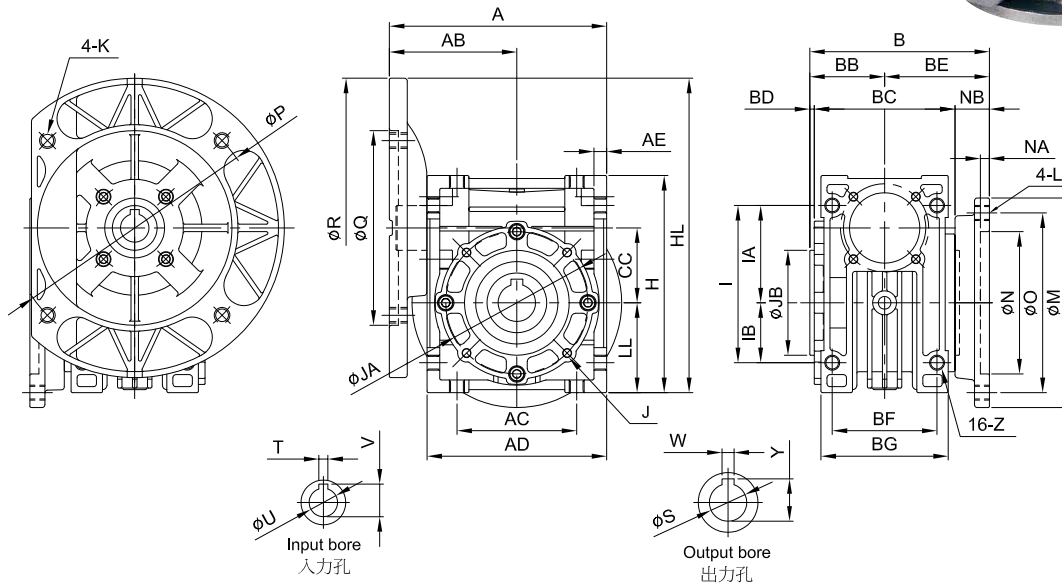
型號 Model	減速比 Ratio	馬力 HP	馬達盤 Motor Flange				入力孔 Input Bore			出力法蘭及出力軸 Output Flange & Output Shaft													重量 Weight (kg)
			P	Q	R	K	V	T	U	N	NA	O	M	L	LS	S	D	WxYxLK	JA	JB	Jx 牙深 Deep		
30	5~60	40W·60W	104	83	□ 90	M6				70	5	85	100	M6	35	16	18	5x5x30	65	55	4-M6-9	1.56	
	5~40	90W	104	83	□ 90	M6	12.7	4	11														
	5~30	63B	115	95	140	M8																	
40	5~60	63B	115	95	140	M8	12.7	4	11	80	6	100	120	M8	40	20	22.5	6x6x35	77	60	4-M6-9	3.1	
	5~30	1/2	130	110	160	M8	16.3	5	14														
50	5~60	1/4	130	110	160	M8	12.7	4	11														
	5~50	1/2	130	110	160	M8	16.3	5	14	95	6	120	140	M10	50	25	28	8x7x45	95	70	4-M6-9	4.83	
	5~30	1	165	130	200	M10	21.8	6	19														
60	5~60	1/2	130	110	160	M8	16.3	5	14														
	5~50	1	165	130	200	M10	21.8	6	19	130	7	160	180	M10	50	25	28	8x7x45	120	80	4-M8-12	7.94	
	5~15	2	165	130	200	M10	27.3	8	24														
70	5~60	1/2	130	110	160	M8	16.3	5	14														
	5~60	1	165	130	200	M10	21.8	6	19	150	7	185	210	M12	60	30	33	8x7x55	140	90	4-M10-15	11.4	
	5~40	2	165	130	200	M10	27.3	8	24														

選配馬力時，請參考「減速機參數」及「馬達規格選配」(第 I5 頁)。 Please refer to page I5 "Reducers Parameter" and "Selection of Motor Size".

# ALUMINUM ALLOY WORM REDUCER SERIES

## 鋁合金蝸輪減速機系列

MODEL : NEOFM



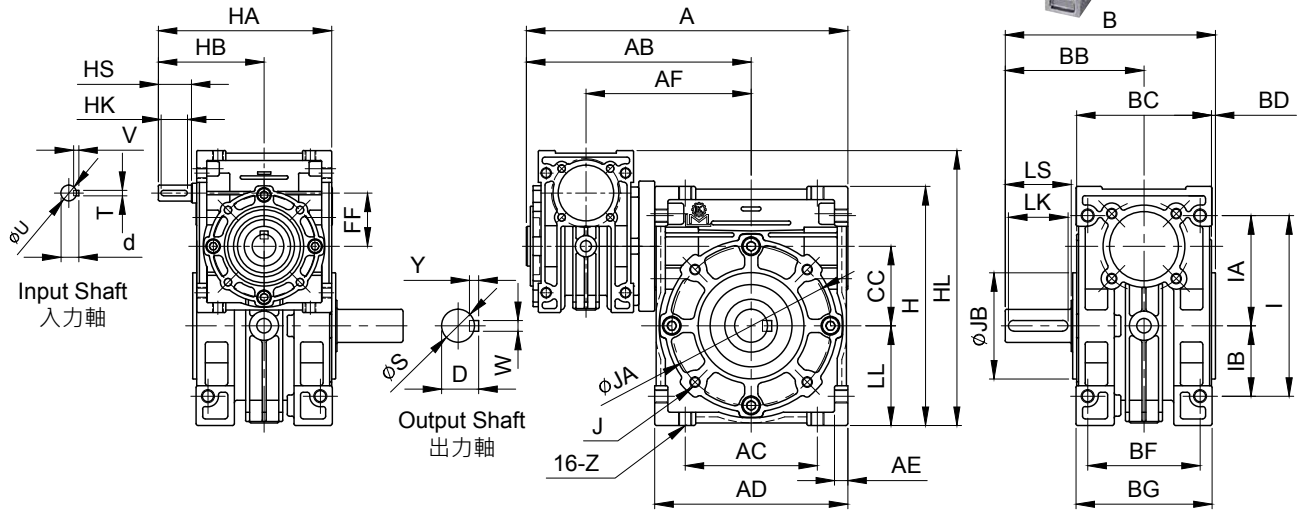
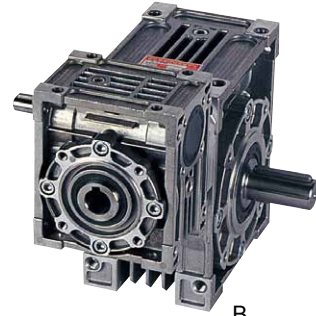
unit: mm

型號 Model	減速比 Ratio	馬力 HP	A	AB	AC	AD	AE	B	BE	NB	BB	BC	BD	BF	BG	CC	LL	H	HL	I	IA	IB	Z
30	5~60	40W·60W	98	58															115				
	5~40	90W	98	58	55	80	6	92.5	60	30	32.5	60	2	45	58	30	40	98	115	72	45	27	M6
	5~30	63B	100	60															140				
40	5~60	63B	125	74	70	102	7.5	114	70	30	44	80	2	60	72	40	50	122	170	90	55	35	M8
	5~30	1/2																	190				
	5~60	1/4	142	82															190				
50	5~50	1/2	142	82	80	120	8.5	130	80	33	50	94	3	70	85	50	60	145	190	105	65	40	M10
	5~30	1	148	88															210				
	5~60	1/2	167	94															215				
60	5~50	1	174	101	100	146	10	154	100	49	54	102	3	85	102	60	75	180	235	136	83	53	M10
	5~15	2	174	101															235				
	5~60	1/2	196	111															235				
70	5~60	1	198	113	120	170	12	164	100	41	64	118	3	90	110	70	85	200	255	150	90	60	M10
	5~60	1	198	113															255				
	5~40	2	198	113															255				

型號 Model	減速比 Ratio	馬力 HP	馬達盤 Motor Flange				入力孔 Input Bore			出力法蘭及出力孔 Output Flange & Output Shaft											重量 Weight (kg)				
			P	Q	R	K	V	T	U	N	NA	O	M	L	W	S	Y	JA	JB	J× 牙深 Deep					
30	5~60	40W·60W	104	83	□ 90	M6																			
	5~40	90W	104	83	□ 90	M6	12.7	4	11	70	5	85	100	M6	5	14	16.3	65	55	4-M6-9			1.58		
	5~30	63B	115	95	140	M8																			
40	5~60	63B	115	95	140	M8	12.7	4	11																
	5~30	1/2	130	110	160	M8	16.3	5	14	80	6	100	120	M8	6	20	22.8	77	60	4-M6-9			2.89		
	5~60	1/4	130	110	160	M8	12.7	4	11																
50	5~50	1/2	130	110	160	M8	16.3	5	14	95	6	120	140	M10	8	25	28.3	95	70	4-M6-9			4.5		
	5~30	1	165	130	200	M10	21.8	6	19																
	5~60	1/2	130	110	160	M8	16.3	5	14																
60	5~50	1	165	130	200	M10	21.8	6	19	130	7	160	180	M10	8	25	28.3	120	80	4-M8-12			7.23		
	5~15	2	165	130	200	M10	27.3	8	24																
	5~60	1/2	130	110	160	M8	16.3	5	14																
70	5~60	1	165	130	200	M10	21.8	6	19	150	7	185	210	M12	8	30	33.3	140	90	4-M10-15			10.6		
	5~60	1	165	130	200	M10	21.8	6	19																
	5~40	2	165	130	200	M10	27.3	8	24																

選配馬力時，請參考「減速機參數」及「馬達規格選配」(第 15 頁)。 Please refer to page I5 "Reducers Parameter" and "Selection of Motor Size".

MODEL : NEH



出力段減速機中心距離 (mm) Central distance of output of reducer.	40	50	60	70
入力段減速機中心距離 (mm) Central distance of input of reducer.	30	30	40	50

unit: mm

型號 Model	減速比 Ratio	馬力 HP	CC	FF	A	AB	AC	AD	AE	AF	B	BB	BC	BD	BF	BG	H	HA	HB	HL
40	100~3600	1/8(90W) 63B	40	30	176.5	125.5	70	102	7.5	93	127	85	80	2	60	72	122	105	65	148
50	100~3600	1/8(90W) 63B	50	30	194.5	134.5	80	120	8.5	102	150	100	94	3	70	85	145	105	65	168
60	100~3600	(1/4) 1/2	60	40	243	170	100	146	10	125	159	105	102	3	85	102	180	131	80	207
70	100~3600	(1/4) 1/2 1	70	50	280	195	120	170	12	145	187	125	118	3	90	110	200	155	95	240

型號 Model	減速比 Ratio	馬力 HP	I	IA	IB	LL	Z	入力軸 Input Shaft				出力軸 Output Shaft						重量 Weight (kg)	
								HS	U	d	TxVxHK	LS	S	D	WxYxLK	JA	JB		Jx 牙深 Deep
40	100~3600	1/8(90W) 63B	90	55	35	50	M8	20	11	12.5	4x4x16	40	20	22.5	6x6x35	77	60	12-M6-9	3.86
50	100~3600	1/8(90W) 63B	105	65	40	60	M10	20	11	12.5	4x4x16	50	25	28	8x7x45	95	70	12-M6-9	5.41
60	100~3600	(1/4) 1/2	136	83	53	75	M10	25	12	13.5	4x4x20	50	25	28	8x7x45	120	80	12-M8-12	8.3
70	100~3600	(1/4) 1/2 1	150	90	60	85	M10	30	15	17	5x5x25	60	30	33	8x7x55	140	90	12-M10-15	13.95

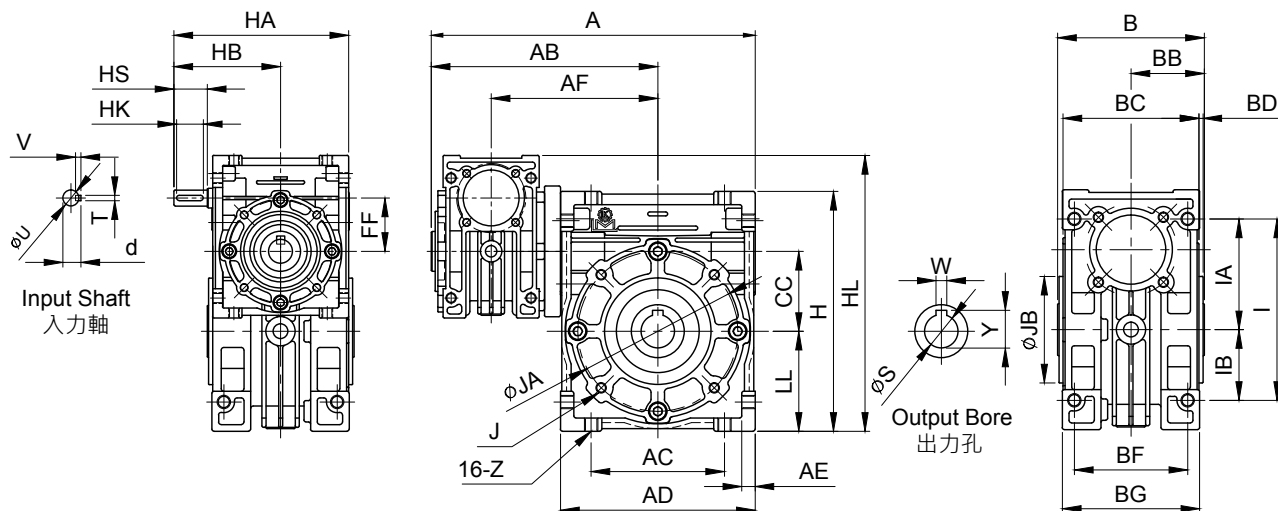
雙段減速機以定轉速為設計，最大扭力請參考「減速機參數」(第 15 頁)，( ) 為較安全選配馬力。

This 2-stage worm reducer is designed to rotate at fixed speed. We recommend to choose the HP inside ( ) for safer choice. Please refer to page I5 "Reducers Parameter."

# ALUMINUM ALLOY WORM REDUCER SERIES

## 鋁合金蝸輪減速機系列

MODEL : NEOH



出力段減速機中心距離 (mm) Central distance of output of reducer.	40	50	60	70
入力段減速機中心距離 (mm) Central distance of input of reducer.	30	30	40	50

unit: mm

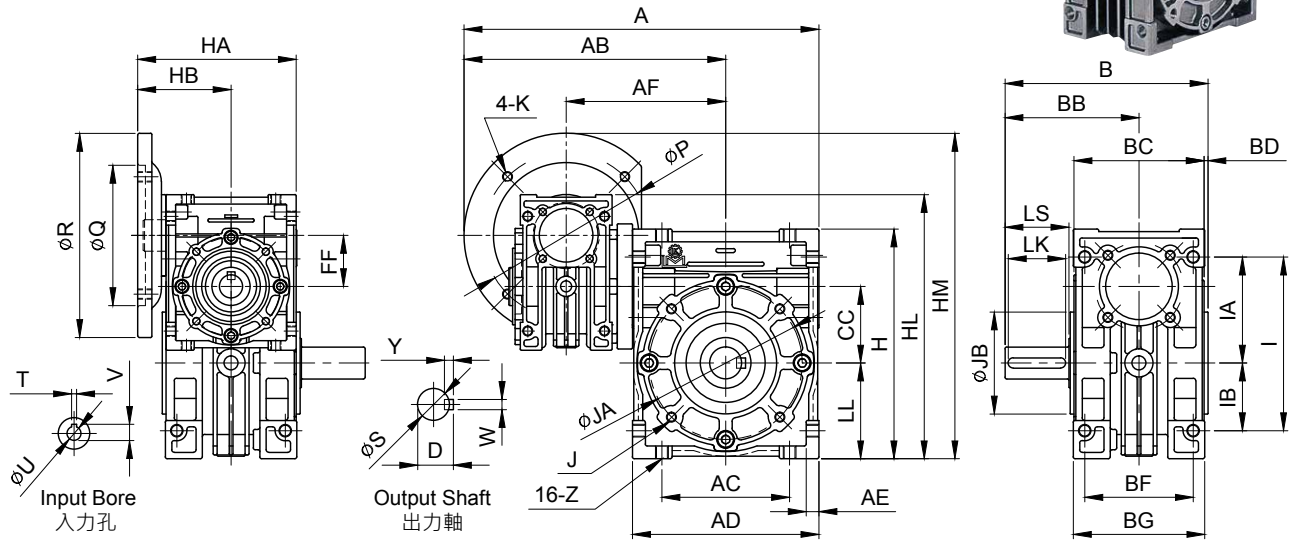
型號 Model	減速比 Ratio	馬力 HP	CC	FF	A	AB	AC	AD	AE	AF	B	BB	BC	BD	BF	BG	H	HA	HB	HL
40	100~3600	1/8(90W) 63B	40	30	176.5	125.5	70	102	7.5	93	88	44	80	2	60	72	122	105	65	148
50	100~3600	1/8(90W) 63B	50	30	194.5	134.5	80	120	8.5	102	98	49	94	3	70	85	145	105	65	168
60	100~3600	(1/4) 1/2	60	40	243	170	100	146	10	125	108	54	102	3	85	102	180	131	80	207
70	100~3600	(1/4) 1/2 1	70	50	280	195	120	170	12	145	128	64	118	3	90	110	200	155	95	240

型號 Model	減速比 Ratio	馬力 HP	I	IA	IB	LL	Z	入力軸 Input Shaft				出力孔 Output Shaft					重量 Weight (kg)	
								HS	U	d	TxVxHK	W	S	Y	JA	JB		Jx 牙深 Deep
40	100~3600	1/8(90W) 63B	90	55	35	50	M8	20	11	12.5	4x4x16	6	20	22.8	77	60	12-M6-9	3.56
50	100~3600	1/8(90W) 63B	105	65	40	60	M10	20	11	12.5	4x4x16	8	25	28.3	95	70	12-M6-9	4.96
60	100~3600	(1/4) 1/2	136	83	53	75	M10	25	12	13.5	4x4x20	8	25	28.3	120	80	12-M8-12	8.23
70	100~3600	(1/4) 1/2 1	150	90	60	85	M10	30	15	17	5x5x25	8	30	33.3	140	90	12-M10-15	14.1

雙段減速機以定轉速設計，最大扭力請參考「減速機參數」(第 15 頁)，( ) 為較安全選配馬力。

This 2-stage worm reducer is designed to rotate at fixed speed. We recommend to choose the HP inside ( ) for safer choice. Please refer to page I5 "Reducers Parameter."

MODEL : NEHM



出力段減速機中心距離 (mm) Central distance of output of reducer.	40	50	60	70
入力段減速機中心距離 (mm) Central distance of input of reducer.	30	30	40	50

unit: mm

型號 Model	減速比 Ratio	馬力 HP	CC	FF	A	AB	AC	AD	AE	AF	B	BB	BC	BD	BF	BG	H	HA	HB	HL	HM	I
40	100~3600	1/8(90W) 63B	40	30	189 214	138 163	70	102	7.5	93	127	85	80	2	60	72	122	98 100	58 60	148	165 190	90
50	100~3600	1/8(90W) 63B	50	30	207 232	147 172	80	120	8.5	102	150	100	94	3	70	85	145	98 100	58 60	168	185 210	105
60	100~3600	(1/4) 1/2	60	40	278	205	100	146	10	125	159	105	102	3	85	102	180	125	74	207	255	136
70	100~3600	(1/4) 1/2 1	70	50	310 310 330	225 225 245	120	170	12	145	187	125	118	3	90	110	200	142 142 148	82 82 88	240	285 285 305	150

型號 Model	減速比 Ratio	馬力 HP	馬達盤及入力孔 Motor Flange & Input Bore											出力軸 Output Shaft						重量 Weight (kg)	
			IA	IB	LL	Z															
							P	Q	R	K	V	T	U	LS	S	D	WxYxLK	JA	JB		Jx 牙深 Deep
40	100~3600	1/8(90W) 63B	55	35	50	M8	104	83	□ 90	M6	12.7	4	11	40	20	22.5	6x6x35	77	60	12-M6-9	3.89
50	100~3600	1/8(90W) 63B	65	40	60	M10	104	83	□ 90	M6	12.7	4	11	50	25	28	8x7x45	95	70	12-M6-9	5.51
60	100~3600	(1/4) 1/2	83	53	75	M10	130	110	160	M8	12.7 16.3	4 5	11 14	50	25	28	8x7x45	120	80	12-M8-12	9.14
70	100~3600	(1/4) 1/2 1	90	60	85	M10	130 130 165	110 110 130	160 160 200	M8 M8 M10	12.7 16.3 21.8	4 5 6	11 14 19	60	30	33	8x7x55	140	90	12-M10-15	14.6

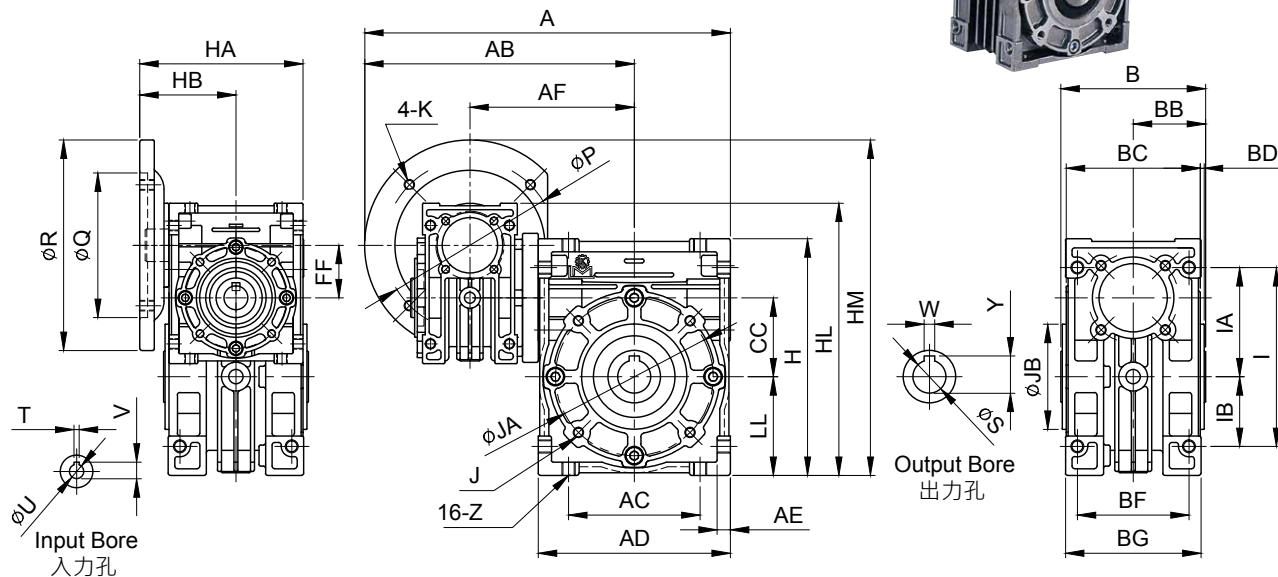
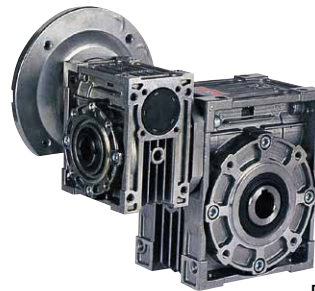
雙段減速機以定轉速設計，最大扭力請參考「減速機參數」(第15頁)，( ) 為較安全選配馬力。  
This 2-stage worm reducer is designed to rotate at fixed speed. We recommend to choose the HP inside ( ) for safer choice. Please refer to page I5 "Reducers Parameter."



# ALUMINUM ALLOY WORM REDUCER SERIES

## 鋁合金蝸輪減速機系列

MODEL : NEOHM



出力段減速機中心距離 (mm) Central distance of output of reducer.	40	50	60	70
入力段減速機中心距離 (mm) Central distance of input of reducer.	30	30	40	50

unit: mm

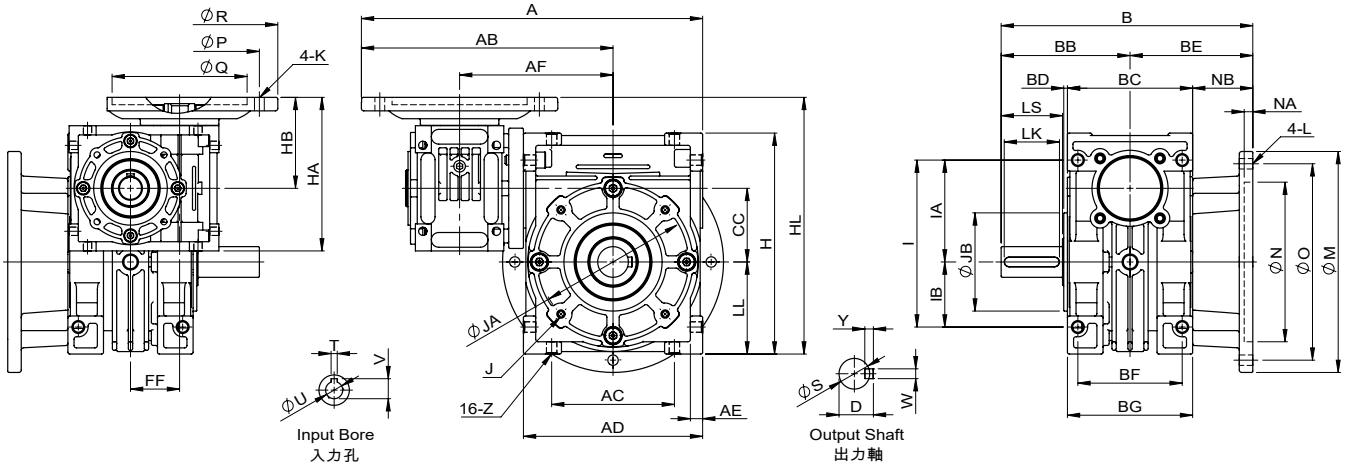
型號 Model	減速比 Ratio	馬力 HP	CC	FF	A	AB	AC	AD	AE	AF	B	BB	BC	BD	BF	BG	H	HA	HB	HL	HM	
40	100~3600	1/8(90W)	40	30	189	138	70	102	7.5	93	88	44	80	2	60	72	122	98	58	148	165	
		63B			214	163												100	60			190
50	100~3600	1/8(90W)	50	30	207	147	80	120	8.5	102	98	49	94	3	70	85	145	98	58	168	185	
		63B			232	172												100	60			210
60	100~3600	(1/4)	60	40	278	205	100	146	10	125	108	54	102	3	85	102	180	125	74	207	255	
		1/2			310	225												142	82			285
70	100~3600	(1/4)	70	50	310	225	120	170	12	145	128	64	118	3	90	110	200	142	82	240	285	
		1/2			310	225												142	82			285
		1			330	245												148	88			305

型號 Model	減速比 Ratio	馬力 HP	馬達盤及入力孔 Motor Flange & Input Bore							出力孔 Output Bore							重量 Weight (kg)				
			I	IA	IB	LL	Z	P	Q	R	K	V	T	U	W	S		Y	JA	JB	J×牙深 Deep
40	100~3600	1/8(90W) 63B	90	55	35	50	M8	104	83	90	M6	12.7	4	11	6	20	22.8	77	60	12-M6-9	3.82
50	100~3600	1/8(90W) 63B	105	65	40	60	M10	104	83	90	M6	12.7	4	11	8	25	28.3	95	70	12-M6-9	5.08
60	100~3600	(1/4)	136	83	53	75	M10	130	110	160	M8	12.7	4	11	8	25	28.3	120	80	12-M8-12	8.7
		1/2										16.3	5	14							
70	100~3600	(1/4)	150	90	60	85	M10	130	110	160	M8	12.7	4	11	8	30	33.3	140	90	12-M10-15	14.4
		1/2										16.3	5	14							
		1										21.8	6	19							

雙段減速機以定轉速設計，最大扭力請參考「減速機參數」(第 15 頁)，( ) 為較安全選配馬力。

This 2-stage worm reducer is designed to rotate at fixed speed. We recommend to choose the HP inside ( ) for safer choice. Please refer to page 15 "Reducers Parameter."

**MODEL : NEFHM**



出力段減速機中心距離 (mm) Central distance of output of reducer.	40	50	60	70
入力段減速機中心距離 (mm) Central distance of input of reducer.	30	30	40	50

unit: mm

型號 Model	減速比 Ratio	馬力 HP	CC	FF	A	AB	AC	AD	AE	AF	B	BE	NB	BB	BC	BD	BF	BG	H	HA	HB	HL	I	IA	IB	LL	Z
40	100~3600	1/8(90W) 63B	40	30	189	138	70	102	7.5	93	155	70	30	85	80	2	60	72	122	98	58	148	90	55	35	50	M8
					214	163														100	60	150					
50	100~3600	1/8(90W) 63B	50	30	207	147	80	120	8.5	102	180	80	33	100	94	3	70	85	145	98	58	168	105	65	40	60	M10
					232	172														100	60	170					
60	100~3600	(1/4) 1/2	60	40	278	205	100	146	10	125	205	100	49	105	102	3	85	102	180	125	74	209	136	83	53	75	M10
					310	225														100	82	237					
70	100~3600	1/2 1	70	50	310	225	120	170	12	145	225	100	41	125	118	3	90	110	200	142	82	237	150	90	60	85	M10
					330	245														100	88	243					

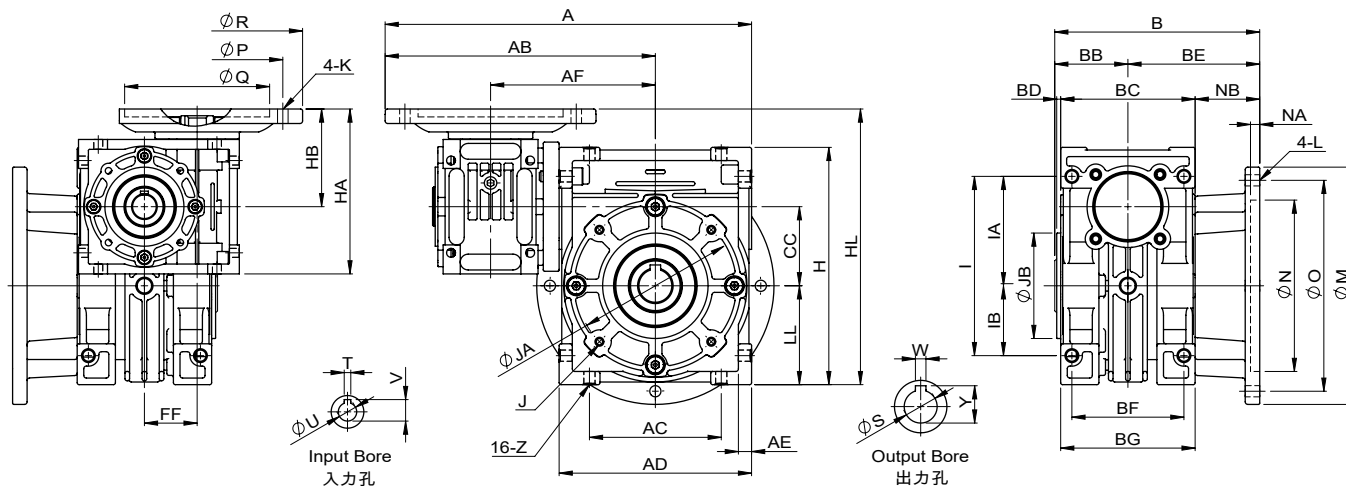
型號 Model	減速比 Ratio	馬力 HP	馬達盤及入力孔 Motor Flange & Input Bore							出力法蘭及出力孔 Output Flange & Output Shaft											重量 Weight (kg)	
			P	Q	R	K	V	T	U	N	NA	O	M	L	LS	S	D	WxYxLK	JA	JB		Jx 牙深 Deep
40	100~3600	1/8(90W) 63B	104	83	□ 90	M6	12.7	4	11	80	6	100	120	M8	40	20	22.5	6x6x35	77	60	4-M6-9	4.07
			115	95	140	M8																
50	100~3600	1/8(90W) 63B	104	83	□ 90	M6	12.7	4	11	95	6	120	140	M10	50	25	28	8x7x45	95	70	4-M6-9	5.79
			115	95	140	M8																
60	100~3600	(1/4) 1/2	130	110	160	M8	12.7	4	11	130	7	160	180	M10	50	25	28	8x7x45	120	80	4-M8-12	9.7
			163	130	160	M8																
70	100~3600	1/2 1	130	110	160	M8	16.3	5	14	150	7	185	210	M12	60	30	33	8x7x55	140	90	4-M10-15	15.54
			165	130	200	M10																

雙段減速機以定轉速設計，最大扭力請參考「減速機參數」(第15頁)，( ) 為較安全選配馬力。  
 This 2-stage worm reducer is designed to rotate at fixed speed. We recommend to choose the HP inside ( ) for safer choice. Please refer to page 15 "Reducers Parameter."

# ALUMINUM ALLOY WORM REDUCER SERIES

## 鋁合金蝸輪減速機系列

MODEL : NEOFHM



出力段減速機中心距離 (mm) Central distance of output of reducer.	40	50	60	70
入力段減速機中心距離 (mm) Central distance of input of reducer.	30	30	40	50

unit: mm

型號 Model	減速比 Ratio	馬力 HP	CC	FF	A	AB	AC	AD	AE	AF	B	BE	NB	BB	BC	BD	BF	BG	H	HA	HB	HL	I	IA	IB	LL
40	100~3600	1/8(90W) 63B	40	30	189 214	138 163	70	102	7.5	93	114	70	30	44	80	2	60	72	122	98 100	58 60	148 150	90	55	35	50
50	100~3600	1/8(90W) 63B	50	30	207 232	147 172	80	120	8.5	102	130	80	33	49	94	3	70	85	145	98 100	58 60	168 170	105	65	40	60
60	100~3600	(1/4) 1/2	60	40	278	205	100	146	10	125	154	100	49	54	102	3	85	102	180	125	74	209	136	83	53	75
70	100~3600	(1/4) 1/2 1	70	50	310 330	225 245	120	170	12	145	164	100	41	64	118	3	90	110	200	142 148	82 88	237 243	150	90	60	85

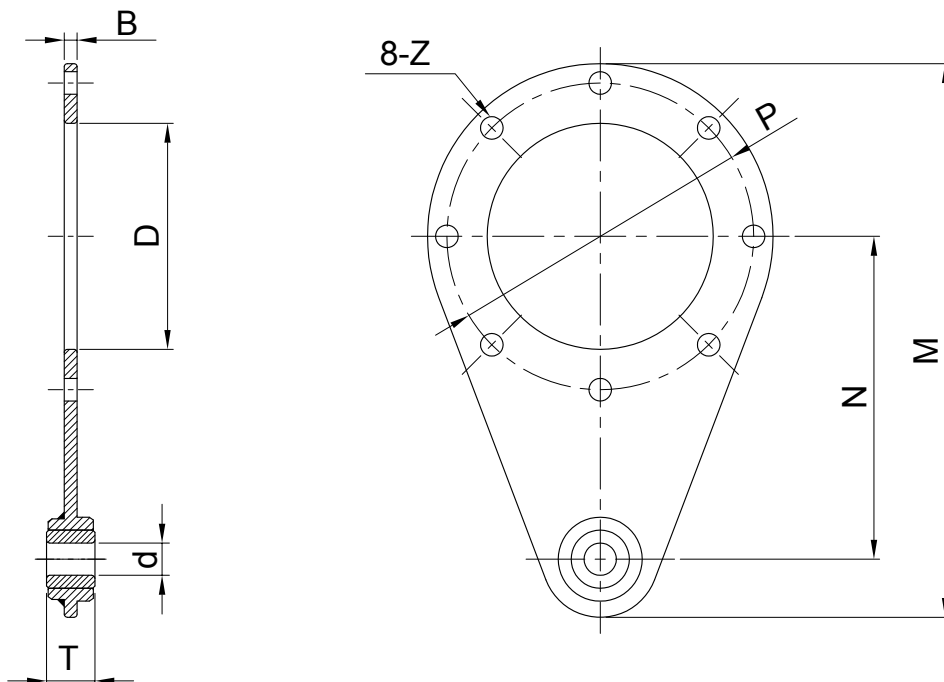
型號 Model	減速比 Ratio	馬力 HP	Z	馬達盤及入力孔 Motor Flange & Input Bore							出力孔 Output Bore										重量 Weight (kg)	
				P	Q	R	K	V	T	U	N	NA	O	M	L	W	S	Y	JA	JB		Jx 牙深 Deep
40	100~3600	1/8(90W) 63B	M8	104 115	83 95	□ 90 140	M6 M8	12.7	4	11	80	6	100	120	M8	6	20	22.8	77	60	4-M6-9	3.81
50	100~3600	1/8(90W) 63B	M10	104 115	83 95	□ 90 140	M6 M8	12.7	4	11	95	6	120	140	M10	8	25	28.3	95	70	4-M6-9	5.25
60	100~3600	(1/4) 1/2	M10	130	110	160	M8	12.7 16.3	4 5	11 14	130	7	160	180	M10	8	25	28.3	120	80	4-M8-12	9.15
70	100~3600	(1/4) 1/2 1	M10	130 165	110 130	160 200	M8 M10	12.7 21.8	4 6	11 19	150	7	185	210	M12	8	30	33.3	140	90	4-M10-15	14.68

雙段減速機以定轉速設計，最大扭力請參考「減速機參數」(第15頁)，( )為較安全選配馬力。

This 2-stage worm reducer is designed to rotate at fixed speed. We recommend to choose the HP inside ( ) for safer choice. Please refer to page I5 "Reducers Parameter."

## ■ 選配件 Optional Accessories (適用 NE 系列)

### 扭力臂 Torque Arm



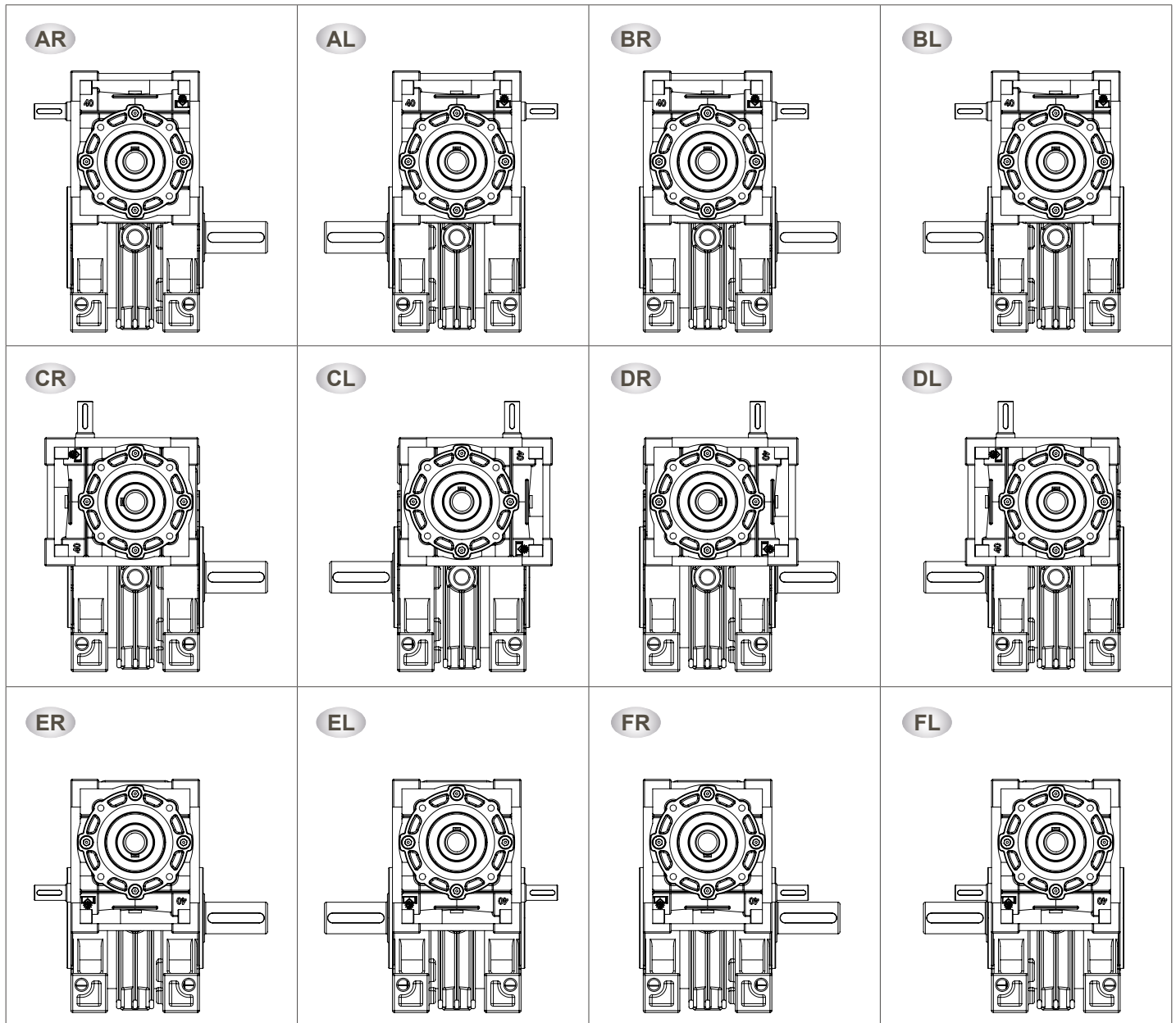
unit: mm

型號 Model	B	D	d	T	P	Z	N	M
30	3.5	55	8	12.5	65	7	85	140
40	4	60	10	14	77	7	100	162.5
50	4	70	10	14	95	7	100	171.5
60	4	80	10	14	120	9	150	237
70	6	90	12	16	140	11	180	285

# ALUMINUM ALLOY WORM REDUCER SERIES

## 鋁合金蝸輪減速機系列

### ■ 安裝方向 Installation Direction ( NE 雙段式 2-Stage Series )



# Aluminum Alloy Worm Reducer



## Indication of Model Numbers

### 機種型號表示

<b>CEM</b>	<b>63</b>	<b>7.5</b>	<b>1/2</b>	<b>R</b>
減速機型 Type	型號 Model	減速比 Ratio	馬力 Horse Power	軸向 Shaft Direction
CEM	63	7.5~60	1/2HP	R
CEOM	75		1HP	L
CEOFM	90		2HP 3HP	

## 減速機參數 Reducers Parameter

馬達 Motor : 4P/60Hz 輸入轉速 Input R.P.M. = 1700 RPM

(安全係數 1.0 以下為輕負荷。 The reducer is used for light loading when SF below 1.0.)

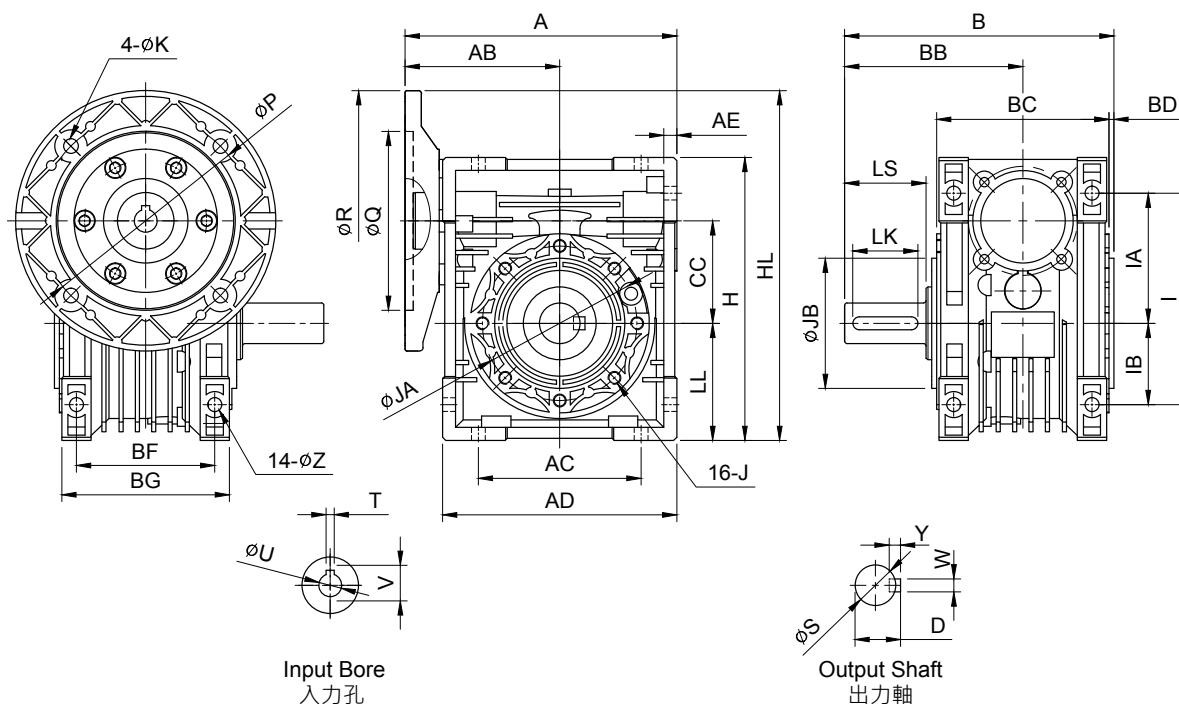
OR= 輸出轉速 Output R.P.M. (RPM) , IH= 輸入馬力 Input HP (kW) , OT= 輸出扭力 Output Torque (Kg-m) , SF= 安全係數 Safety Factor

型號 Mode	減速比 Ratio	7.5		10		15		20		25		30		40		50		60	
	OR	227		170		113		85		68		56		42		34		28	
	IH	OT	SF	OT	SF	OT	SF	OT	SF	OT	SF	OT	SF	OT	SF	OT	SF	OT	SF
63	0.37	1.58	5.9	1.94	5.2	2.81	4	3.56	3.7	4.2	3.2	4.87	3.7	6.87	2.9	7.58	2.5	8.8	1.9
	0.75	3	2.9	3.7	2.6	5.45	2	6.9	1.8	8.2	1.6	9.5	1.8	13.5	1.5	14.9	1.2	17.4	0.9
	1.5	5.73	1.5	7.3	1.3	10.8	1	13.5	0.9	16.3	0.8	18.7	0.9	-	-	-	-	-	-
75	0.75	3.36	6.8	3.98	4.6	5.56	3.6	7.09	3	8.39	2.6	9.78	3	11.2	1.6	15.3	2	17.8	1.8
	1.5	5.9	3.4	7.8	2.3	10.9	1.8	14	1.5	16.6	1.3	19.4	1.5	25	1.2	13.93	1	14.58	1
	2.2	10.1	1.7	13.3	1.1	19.1	0.9	-	-	-	-	-	-	-	-	-	-	-	-
90	1.5	5.9	3.6	7.8	3.4	10.9	3	14	2.1	16.6	1.6	19.4	1.7	25.1	1.2	27.15	1.3	24.4	1
	2.2	10.2	2.9	13.4	2.3	19.3	1.9	25.1	1.4	30.6	1.1	35.3	1.3	-	-	-	-	-	-

# ALUMINUM ALLOY WORM REDUCER SERIES

## 鋁合金蝸輪減速機系列

MODEL : CEM



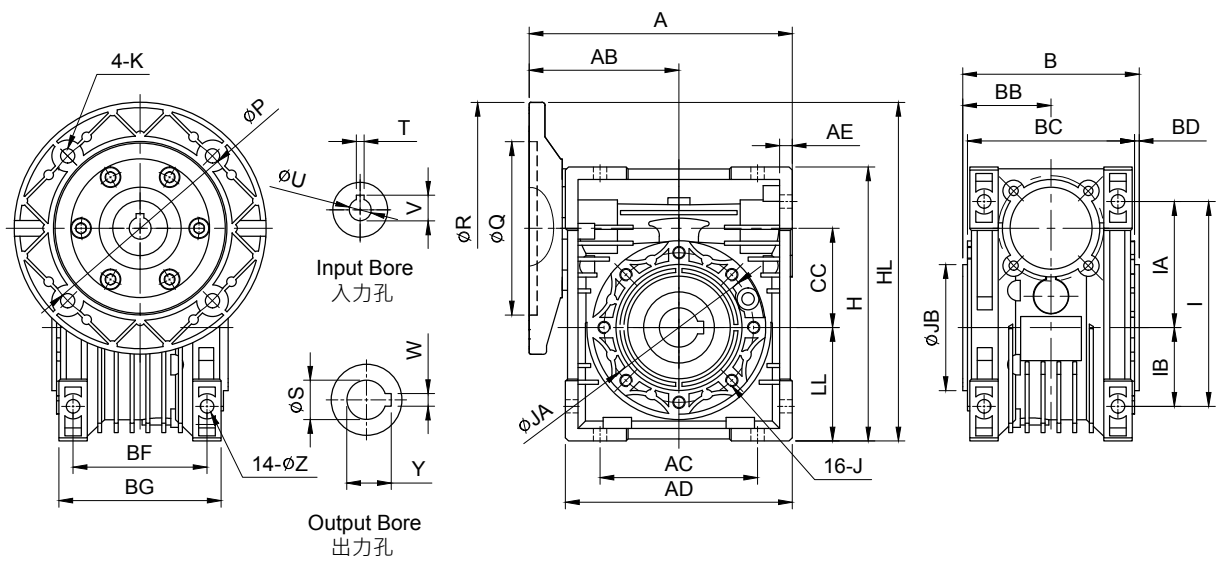
unit: mm

型號 Model	減速比 Ratio	馬力 HP	A	AB	AC	AD	AE	B	BB	BC	BD	BF	BG	CC	LL	H	HL	I	IA	IB	Z
63	7.5~60	1/2	167	95	100	144	8	166	110	106	3	85	103	63	72	174	215	130	80	50	8.5
		1	167	95	100	144	8	166	110	106	3	85	103	63	72	174	235				
		2	167	95	100	144	8	166	110	106	3	85	103	63	72	174	235				
75	7.5~60	1	199	113	120	172	10	184	124	114	3	90	112	75	86	205	261	153	93	60	11.5
		2	199	113	120	172	10	184	124	114	3	90	112	75	86	205	261				
		3	200	114	120	172	10	184	124	114	3	90	112	75	86	205	286				
90	7.5~60	2	233	130	140	206	11	225	155	134	3	100	130	90	103	238	293	172	102	70	13
		3	234	131	140	206	11	225	155	134	3	100	130	90	103	238	318				

型號 Model	減速比 Ratio	馬力 HP	馬達盤及入力孔 Motor Flange & Input Bore							出力軸 Output Shaft							重量 Weight (kg)
			P	Q	R	K	V	T	U	LS	S	D	WxYxLK	JA	JB	Jx牙深 Deep	
63	7.5~60	1/2	130	110	160	9	16.3	5	14	50	25	28	8x7x40	95	80	M8-12	6.7
		1	165	130	200	11	21.8	6	19								
		2	165	130	200	11	27.3	8	24								
75	7.5~60	1	165	130	200	11	21.8	6	19	60	28	31	8x7x50	115	95	M8-12	9.6
		2	165	130	200	11	27.3	8	24								
		3	215	180	250	13	31.3	8	28								
90	7.5~60	2	165	130	200	11	27.3	8	24	80	35	38	10x8x65	130	110	M10-15	15.5
		3	215	180	250	13	31.3	8	28								

選配馬力時，請參考「減速機參數」(第 I20 頁)。 Please refer to page I20 "Reducers Parameter".

MODEL : CEOM



unit: mm

型號 Model	減速比 Ratio	馬力 HP	A	AB	AC	AD	AE	B	BB	BC	BD	BF	BG	CC	LL	H	HL	I	IA	IB	Z	
63	7.5~60	1/2	167	95													215					
		1	167	95	100	144	8	112	56	106	3	85	103	63	72	174	235	130	80	50	8.5	
		2	167	95														235				
75	7.5~60	1	199	113													261					
		2	199	113	120	172	10	120	60	114	3	90	112	75	86	205	261	153	93	60	11.5	
		3	200	114														286				
90	7.5~60	2	233	130	140	206	11	140	70	134	3	100	130	90	103	238	293	172	102	70	13	
		3	234	131														318				

型號 Model	減速比 Ratio	馬力 HP	馬達盤及入力孔 Motor Flange & Input Bore							出力孔 Output Shaft							重量 Weight (kg)						
			P	Q	R	K	V	T	U	W	S	Y	JA	JB	Jx 牙深 Deep								
63	7.5~60	1/2	130	110	160	9	16.3	5	14														
		1	165	130	200	11	21.8	6	19	8	25	28.3	95	80	M8-12							6.2	
		2	165	130	200	11	27.3	8	24														
75	7.5~60	1	165	130	200	11	21.8	6	19														
		2	165	130	200	11	27.3	8	24	8	28	31.3	115	95	M8-12							8.7	
		3	215	180	250	13	31.3	8	28														
90	7.5~60	2	165	130	200	11	27.3	8	24	10	35	38.3	130	110	M10-15								
		3	215	180	250	13	31.3	8	28														

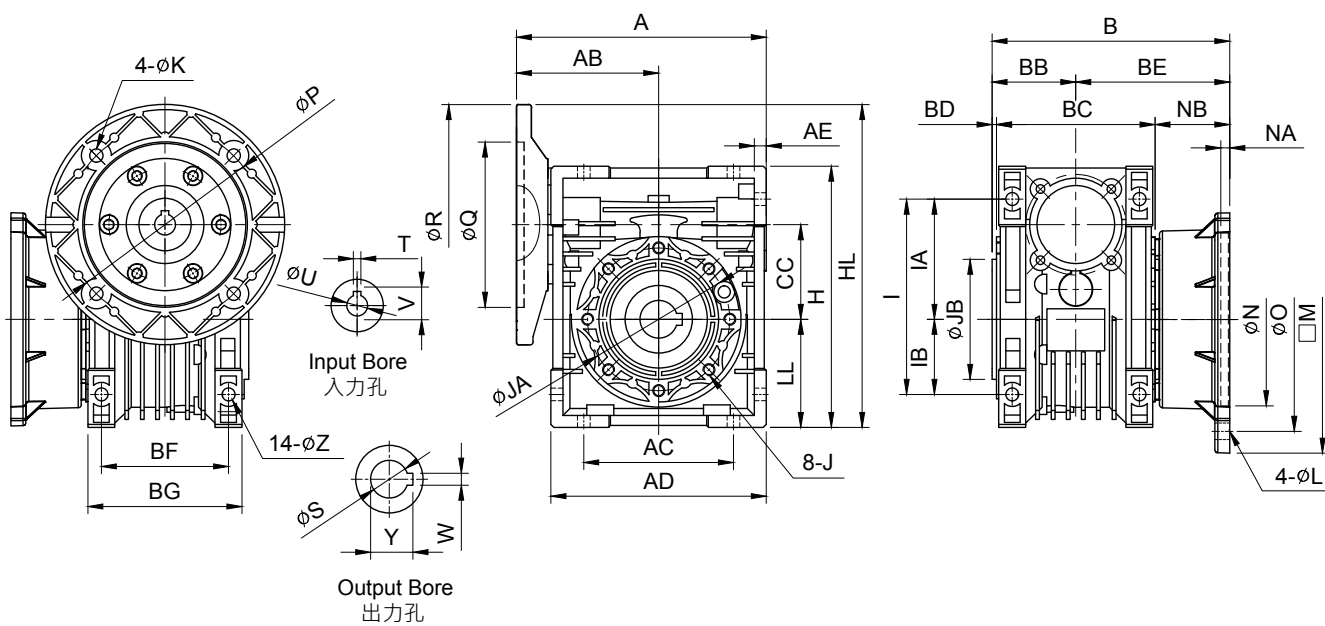
選配馬力時，請參考「減速機參數」(第 I20 頁)。 Please refer to page I20 "Reducers Parameter".



# ALUMINUM ALLOY WORM REDUCER SERIES

## 鋁合金蝸輪減速機系列

MODEL : CEOFM



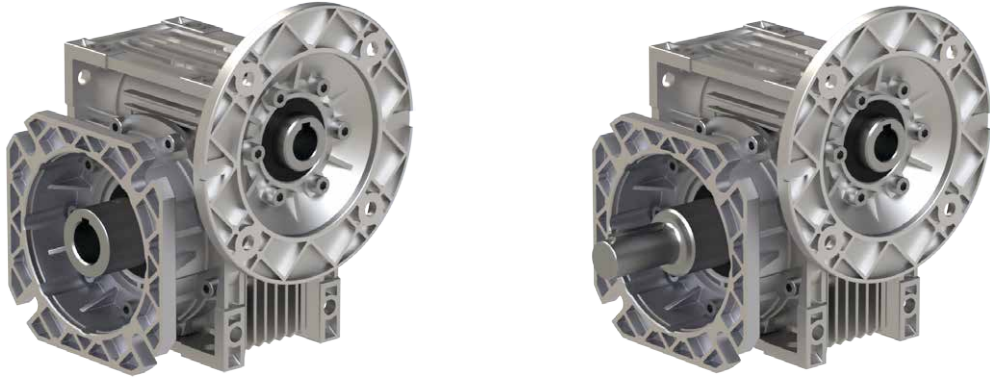
unit: mm

型號 Model	減速比 Ratio	馬力 HP	A	AB	AC	AD	AE	B	BE	NB	BB	BC	BD	BF	BG	CC	LL	H	HL	I	IA	IB	Z
63	7.5~60	1/2	167	95														215					
		1	167	95	100	144	8	159	103	50	56	106	3	85	103	63	72	174	235	130	80	50	8.5
		2	167	95															235				
75	7.5~60	1	199	113														261					
		2	199	113	120	172	10	171	111	54	60	114	3	90	112	75	86	205	261	153	93	60	11.5
		3	200	114															286				
90	7.5~60	2	233	130														293					
		3	234	131	140	206	11	181	111	44	70	134	3	100	130	90	103	238	293	172	102	70	13
																			318				

型號 Model	減速比 Ratio	馬力 HP	馬達盤及入力孔 Motor Flange & Input Bore							出力法蘭及出力孔 Output Flange & Output Shaft										重量 Weight (kg)				
			P	Q	R	K	V	T	U	N	NA	O	M	L	W	S	Y	JA	JB		Jx 牙深 Deep			
63	7.5~60	1/2	130	110	160	9	16.3	5	14															
		1	165	130	200	11	21.8	6	19	115	6	150	□ 142	11	8	25	28.3	95	80	M8-12		6.6		
		2	165	130	200	11	27.3	8	24															
75	7.5~60	1	165	130	200	11	21.8	6	19															
		2	165	130	200	11	27.3	8	24	130	6	165	□ 169	14	8	28	31.3	115	95	M8-12		9.4		
		3	215	180	250	13	31.3	8	28															
90	7.5~60	2	165	130	200	11	27.3	8	24															
		3	215	180	250	13	31.3	8	28	152	6	175	□ 200	14	10	35	38.3	130	110	M10-15		14.6		


選配馬力時，請參考「減速機參數」(第 I21 頁)。 Please refer to page I21 "Reducers Parameter".

# Aluminum Alloy Worm Reducer



## Indication of Model Numbers

機種型號表示

<b>CAMW</b>	<b>75</b>		<b>7.5</b>	<b>1</b>	<b>R</b>
減速機型 Type  CAMW CADW	型號 Model  75	出力法蘭 Output Flange  □：標準品 Standard  A：圓形出力法蘭 Round Output Flange	減速比 Ratio  7.5~60	馬力 Horse Power  1HP 2HP 3HP	軸向 Shaft Direction  R L

## 減速機參數 Reducers Parameter

馬達 Motor : 4P/60Hz 輸入轉速 Input R.P.M. = 1700 RPM

(安全係數 1.0 以下為輕負荷。 The reducer is used for light loading when SF below 1.0.)

OR= 輸出轉速 Output R.P.M. (RPM) , IH= 輸入馬力 Input HP (kW) , OT= 輸出扭力 Output Torque (Kg-m) , SF= 安全係數 Safety Factor

型號 Mode	減速比 Ratio	7.5		10		15		20		25		30		40		50		60	
	OR	227	170	113	85	68	56	42	34	28	IH		OT		SF		OT		SF
75	0.75	3.36	6.8	3.98	4.6	5.56	3.6	7.09	3	8.39	2.6	9.78	3	12.6	2.4	15.3	2	17.8	1.8
	1.5	5.9	3.4	7.8	2.3	10.9	1.8	14	1.5	16.6	1.3	19.4	1.5	25	1.2	30.4	1	35.2	0.9
	2.2	10.1	1.7	13.3	1.1	19.1	0.9	-	-	-	-	-	-	-	-	-	-	-	-

# ALUMINUM ALLOY WORM REDUCER SERIES

## 鋁合金蝸輪減速機系列

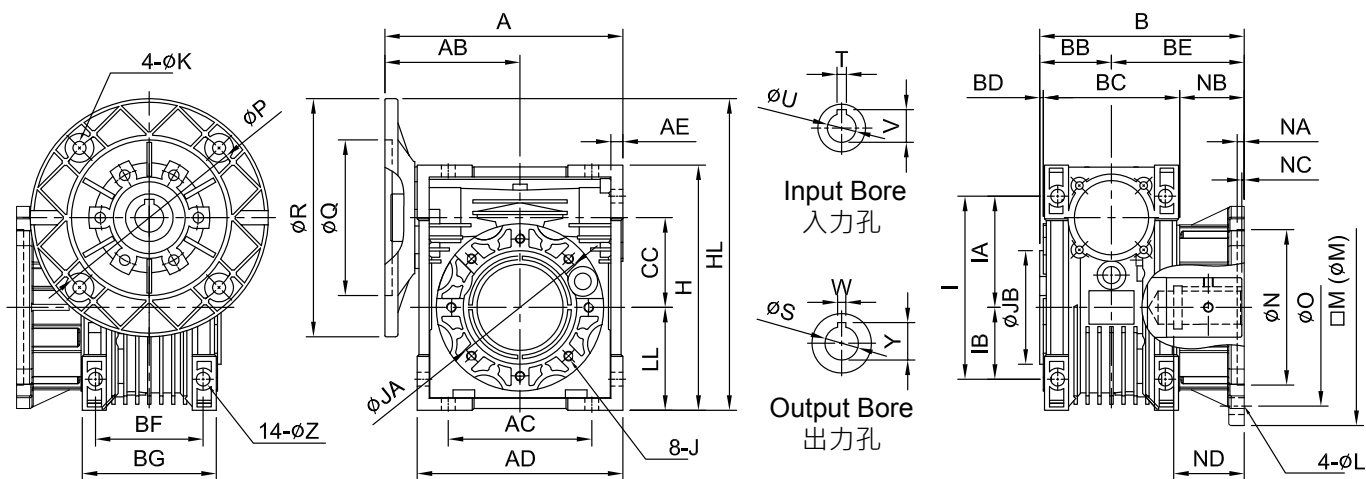
MODEL : CAMW



▲ 75#



▲ 75A#



unit: mm

型號 Model	減速比 Ratio	馬力 HP	A	AB	AC	AD	AE	B	BE	NB	NC	BB	BC	BD	BF	BG	CC	LL	H	HL	I	IA	IB	Z
75 75A	7.5~60	1	199	113	120	172	10	171 185	111 125	54 68	2	60	114	3	90	112	75	86	205	261	153	93	60	11.5
75 75A	7.5~60	2	199	113	120	172	10	171 185	111 125	54 68	2	60	114	3	90	112	75	86	205	261	153	93	60	11.5
75 75A	7.5~15	3	200	114	120	172	10	171 185	111 125	54 68	2	60	114	3	90	112	75	86	205	286	153	93	60	11.5

型號 Model	減速比 Ratio	馬力 HP	馬達盤及入力孔 Motor Flange & Input Bore							出力法蘭及出力孔 Output Flange & Output Shaft											重量 Weight (kg)		
			P	Q	R	K	V	T	U	N	NA	ND	O	M	L	W	S	Y	JA	JB		Jx 牙深 Deep	
75 75A	7.5~60	1	165	130	200	11	21.8	6	19	130	6	59	165 160	$\square$ 169 185	14 11	7 8	25 28 30	28.3 31.3 33.3	115	95	M8-12		9.8
75 75A	7.5~60	2	165	130	200	11	27.3	8	24	130	6	59	165 160	$\square$ 169 185	14 11	7 8	25 28 30	28.3 31.3 33.3	115	95	M8-12		9.8
75 75A	7.5~15	3	215	180	250	13	31.3	8	28	130	6	59	165 160	$\square$ 169 185	14 11	7 8	25 28 30	28.3 31.3 33.3	115	95	M8-12		10

選配馬力時，請參考「減速機參數」(第 I24 頁)。 Please refer to page I24 "Reducers Parameter".

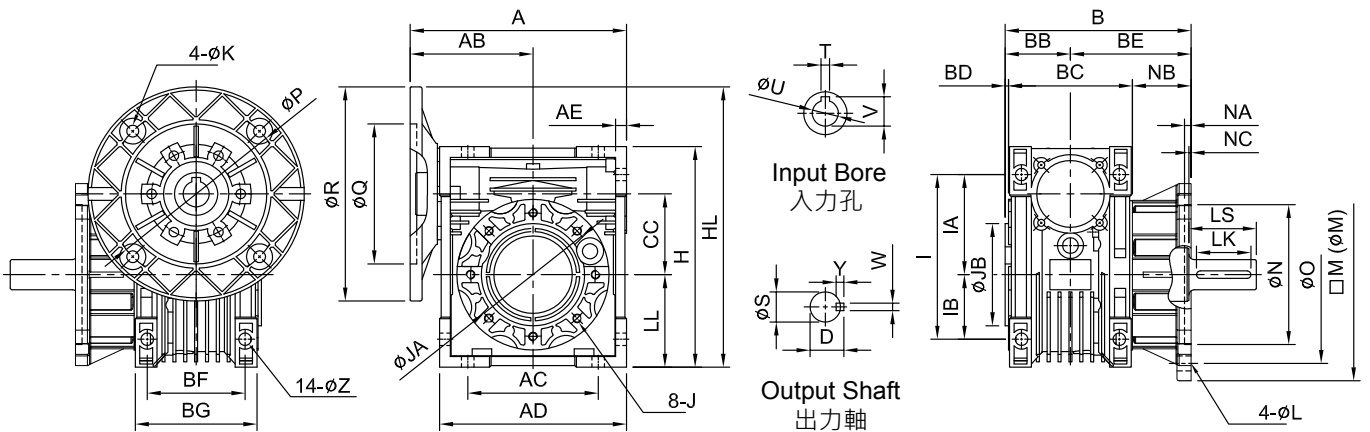
**MODEL : CADW**



▲ 75#



▲ 75A#



unit: mm

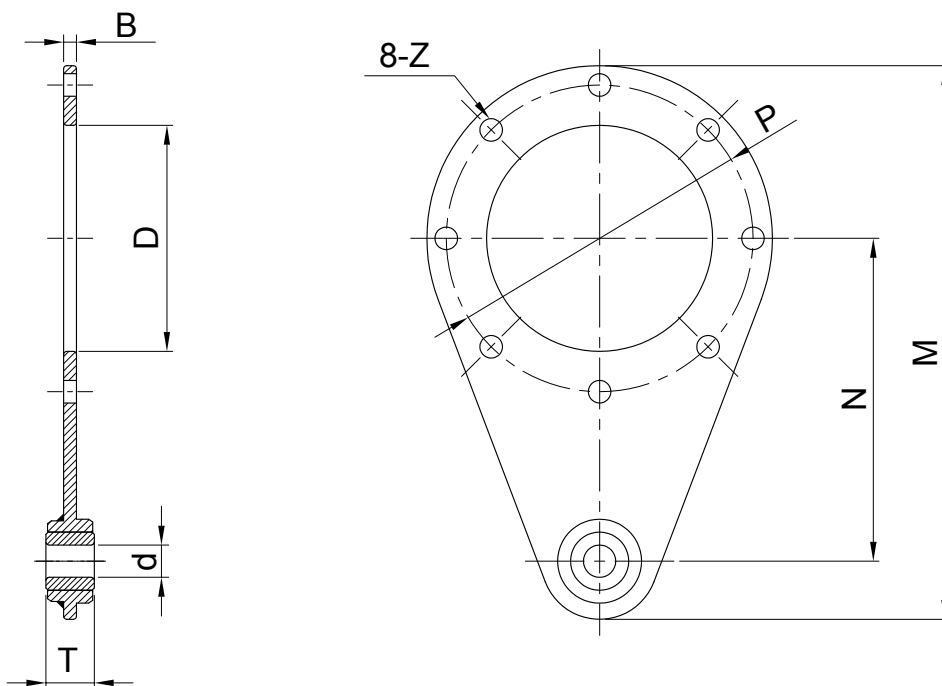
型號 Model	減速比 Ratio	馬力 HP	A	AB	AC	AD	AE	B	BE	NB	NC	BB	BC	BD	BF	BG	CC	LL	H	HL	I	IA	IB	Z
75 75A	7.5~60	1	199	113	120	172	10	171 185	111 125	54 68	2	60	114	3	90	112	75	86	205	261	153	93	60	11.5
75 75A	7.5~60	2	199	113	120	172	10	171 185	111 125	54 68	2	60	114	3	90	112	75	86	205	261	153	93	60	11.5
75 75A	7.5~15	3	200	114	120	172	10	171 185	111 125	54 68	2	60	114	3	90	112	75	86	205	286	153	93	60	11.5

型號 Model	減速比 Ratio	馬力 HP	馬達盤及入力孔 Motor Flange & Input Bore							出力法蘭及出力軸 Output Flange & Output Shaft											重量 Weight (kg)	
			P	Q	R	K	V	T	U	N	NA	O	M	L	LS	S	D	WxYxLK	JA	JB		Jx 牙深 Deep
75 75A	7.5~60	1	165	130	200	11	21.8	6	19	130	6	165 160	169 185	14 11	62	25	28	7x7x50	115	95	M8-12	9.8
75 75A	7.5~60	2	165	130	200	11	27.3	8	24	130	6	165 160	169 185	14 11	62	28	31	7x7x50	115	95	M8-12	9.8
75 75A	7.5~15	3	215	180	250	13	31.3	8	28	130	6	165 160	169 185	14 11	62	28	31	7x7x50	115	95	M8-12	10

選配馬力時，請參考「減速機參數」(第 I24 頁)。 Please refer to page I24 "Reducers Parameter".

### ■ 選配品 Optional Accessories ( 適用 CE & CA 系列 )

#### 扭力臂 Torque Arm



unit: mm

型號 Model	B	D	d	T	P	Z	N	M
63	6	80	10	14	95	9	150	223
75	6	95	20	25	115	9	200	299
90	6	110	20	25	130	11	200	310



## 潤滑油選定 Selection of Lubricant Oil

適當潤滑油的黏度，能使蝸輪與蝸桿磨擦容易，遇高負荷及衝擊負荷時，減速機才能充分發揮其機能。右表即"利明牌"減速機潤滑油的選定：

Proper viscosity of lubricant is contributive to ease the friction of worm gears, so the speed reducer can fully apply its function in the case of high load or impact load. The table right shows the selection of lubricants for LIMING gear reducers:

油量表 Oil Capacities (unit: cc)

Type Model	NE	Type Model	CE / CA
30#	30	63#	300
40#	70	75#	420
50#	140	90#	1000
60#	260		
70#	360		

### 注意事項 Notices

- ◆ 本公司出廠減速機使用合成齒輪油。(不能使  
用礦物油，或礦物油與合成齒輪油混合使用)
- ◆ 最初使用 300 小時後，洗淨內部、換上新油  
以後每 2000 小時換油。
- ◆ 在高速、高溫、低速、重荷重、強制潤滑等  
特殊情況下使用場合，請與本公司洽商。
- ◆ 潤滑油不足可能導致蝸輪快速磨損和效率降  
低。
- ◆ 潤滑油過多可能導致漏油。
- ◆ 請加入適當潤滑。
- ◆ LIMING gear reducers use synthetic gear oil. (Do not use  
mineral oil, or mix mineral oil with synthetic gear oil.)
- ◆ After Initial 300 hours of usage, the interior of the reducing  
gear should be cleaned up and refill new oil. And then, after  
every 2000 hours of usage replace new oil again.
- ◆ Please contact with our company if the gear reducer will  
be used in special conditions, such as high speed, high  
temperature, low speed, heavy load, and forced lubrication  
and so on.
- ◆ Insufficient lubricant oil may lead to the rapid wears of worm  
gear and low efficiency.
- ◆ Excessive lubricant could result in leakage.
- ◆ Please fill in adequate lubricant oil.

## 零件對照表 Table of Parts

型號 Model	零件 Parts	出力軸蓋 output shaft cover	入力軸蓋 input shaft cover	馬達盤 Motor Flange				
				NE	CE/CA	40W、60W、90W	1/4HP、1/2HP	1HP
30#	Bearing	6005 x 2	6202ZZ x 2	6202ZZ x 1	6003ZZ x 1	-	-	-
	Oil Seal	TC25x47x7	SC15x35x7	SC17x30x7	-	-	-	-
40#	Bearing	6006 x 2	6202ZZ x 2	-	6302ZZ x 1	6905ZZ x 1	-	-
	Oil Seal	TC30x47x7	SC15x42x7	-	SC25x35x7	-	-	-
50#	Bearing	6008 x 2	6303ZZ x 2	-	6303ZZ x 1	6005ZZ x 1	6906ZZ x 1	6303ZZ x 1
	Oil Seal	TC40x55x7	SC17x47x7	-	SC25x40x7	SC30x40x8	-	-
60#	Bearing	6208 x 2	6304ZZ x 2	-	6304ZZ x 1	6205ZZ x 1	6304ZZ x 1	320/28 x 1
	Oil Seal	TC40x62x10	SC20x52x8	-	SC25x46x7	SC28x46x7	SC35x46x7	-
70#	Bearing	6210 x 2	6305ZZ x 2	-	6206ZZ x 1	6305ZZ x 1	6007ZZ x 1	6305ZZ x 1
	Oil Seal	TC50x70x10	SC25x62x8	-	SC30x55x7	SC35x55x8	SC35x55x8	-
-	63#	Bearing	6009 x 2	-	-	-	6007ZZ x 1	6007ZZ x 1
		Oil Seal	TC45x65x10	-	-	SC35x52x7	SC35x52x7	6205ZZ x 1
-	75#	Bearing	6010 x 2	-	-	-	6008ZZ x 1	6008ZZ x 1
		Oil Seal	TC50x72x10	-	-	-	TC40x60x10	6206ZZ x 1
-	90#	Bearing	6012 x 2	-	-	-	-	6008ZZ x 1
		Oil Seal	TC60x85x10	-	-	-	-	6206ZZ x 1

1. Oil Seal = 油封規格 Oil Seal
2. Bearing = 軸承規格 Ball Bearing
3. 以上數值僅供參考，如有變動恕不另行通知。

The above information is for reference only. No notices will be made for any changes.