

FT series



Indication of Model Numbers

機種型號表示



減速機機型 Type	型號 Model	入力表示 Input	出力表示 Output	軸承形式 Bearing	速比 Ratio	馬達型號 Motor Type
FT	42 50 60 70	F: 入力法蘭 Input Flange R44: 減速機 Reducer 1-Stage: R44、R62... 2-Stage: R44S、R62S... 2-Stage (A-Type): R62A...	O: 中空軸 Hollow Shaft P: 出力盤式 Fixing Flange C: 迫緊環 Set Collar S: 單出力軸心 Single Output Shaft V: 雙出力軸心 Double Output Shaft	B: 滾珠軸承 Ball Bearing	2 3 4 5 10 15 20 25 30 40 50	

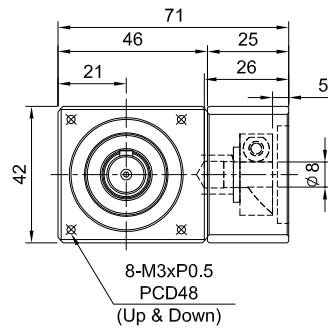
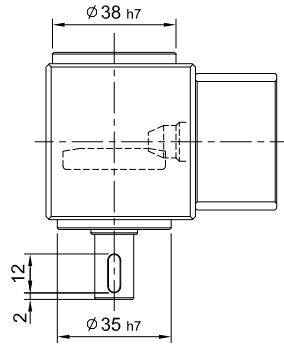
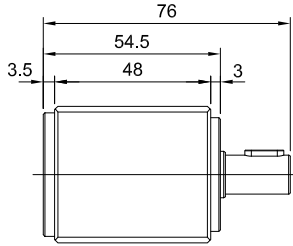
規格 Parameter	Code	Unit	單段 1-Stage				雙段 2-Stage				
			Ratio	42	50	60	70	Ratio	50	60	70
額定輸出扭矩 / Rated Output Torque (Nominal output torque)	T_{2N}	Nm	2 3 4 5 - - -	10 9 7 6 - - -	13 11 9 8 - - -	15 13 13 12 - - -	22 18 18 16 - - -	10 15 20 25 30 40 50	13 11 9 8 11 9 8	15 13 13 12 13 13 12	22 18 18 16 18 18 16
最大加速扭矩 / Max. Acceleration Torque	T_{2B}	Nm	2~5 10~50	1.5 倍額定輸出扭矩 1.5 Times of Rated Output Torque							
額定輸入轉速 / Rated Input Speed	n_{1N}	rpm	2~5	3,000				10~50	3,000		
最大輸入轉速 / Max. Input Speed	n_{1B}	rpm	2~5	7,000				10~50	7,000		
背隙 / Backlash		arcmin	2~5	≤ 10				10~50	≤ 12		
容許徑向力 / Max. Radial Force 滾珠軸承 Ball Bearing	F_{2rB}	N	2~5	300	488	600	800	10~50	488	600	800
容許軸向力 / Max. Axial Force 滾珠軸承 Ball Bearing	F_{2aB}	N	2~5	150	244	300	400	10~50	244	300	400
使用壽命 / Service Life	L_H	hr	2~5 10~50	S5 周期運轉 : >20,000 (S1 連續運轉 : >10,000 hrs) S5 Cycle Operation : >20,000 (S1 Continuous operation : >10,000 hrs)							
效率 / Efficiency	η	%	2~5	94% ~ 98%				10~50	90% ~ 94%		
使用溫度 / Operating Temperature		°C	2~5 10~50	-10°C ~ +90°C							
潤滑 / Lubrication			2~5 10~50	全合成潤滑油脂 Synthetic Grease							
噪音值 / Noise Level		dB	2~5	64	66	68	70	10~50	68	70	72

轉動慣量 Mass Moments of Inertia (kgcm²)

規格 Parameter	Code	Unit	單段 1-Stage				雙段 2-Stage				
			Ratio	42	50	60	70	Ratio	50	60	70
轉動慣量 / Mass Moments of Inertia	kgcm ²	Nm	2	0.08	0.15	0.32	0.80	10	0.04	0.04	0.10
			3	0.08	0.15	0.30	0.75	15	0.04	0.04	0.10
			4	0.08	0.15	0.30	0.70	20	0.04	0.04	0.10
			5	0.09	0.16	0.29	0.68	25	0.04	0.04	0.10
			-	-	-	-	-	30	0.04	0.04	0.10
			-	-	-	-	-	40	0.04	0.04	0.10
			-	-	-	-	-	50	0.04	0.04	0.10

MODEL : FT42

RATIO : 2.3.4.5 (單段 1-Stage)



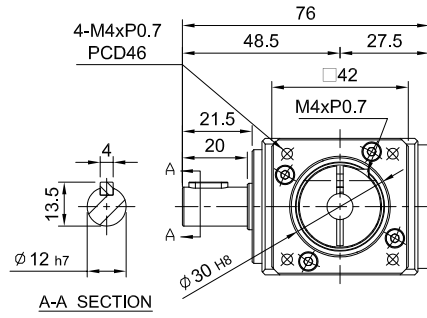
FT-FS

入力法蘭 - 單出力軸心

Input Flange

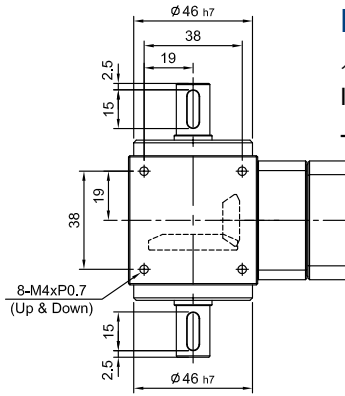
- Single Output Shaft

Model Code	42
Weight	0.47
±3% (kg)	



MODEL : FT50

RATIO : 2.3.4.5 (單段 1-Stage)



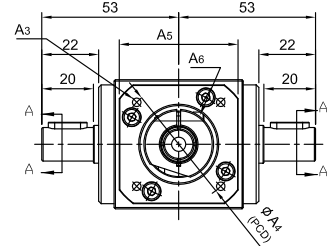
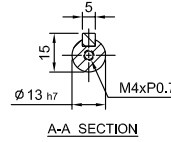
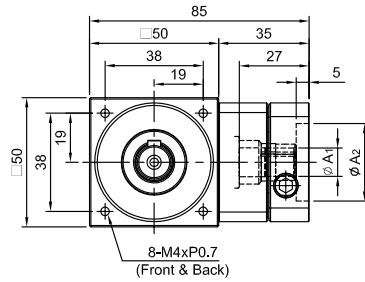
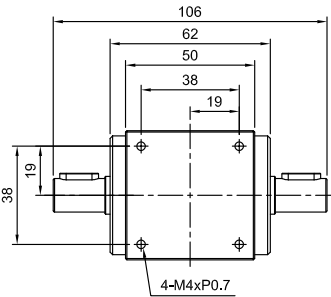
FT-FV

入力法蘭 - 雙出力軸心

Input Flange

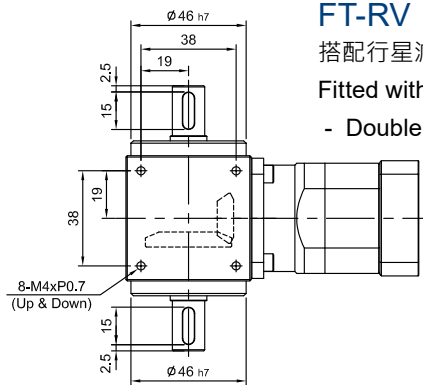
- Double Output Shaft

unit:mm	
Model Code	50
A1	11
A2	30 · 40 · 50
A3	M4 · M5
A4	46 · 63
A5	46 · 55
A6	M4 x P0.7
Weight ±3% (kg)	0.8



MODEL : FT50

RATIO : 10.15.20.25.30.40.50 (雙段 2-Stage)



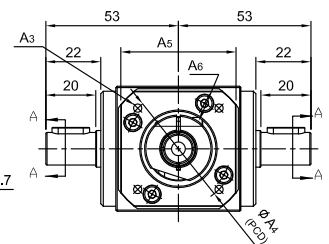
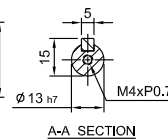
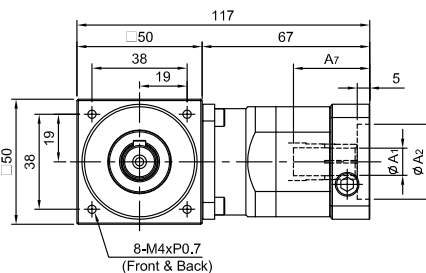
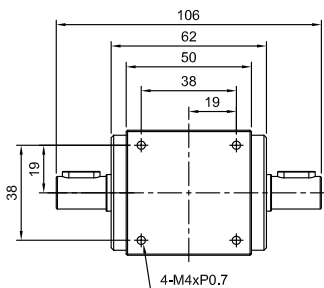
FT-RV

搭配行星減速機 - 雙出力軸心

Fitted with Planetary Reducer

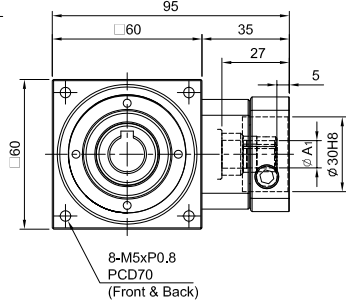
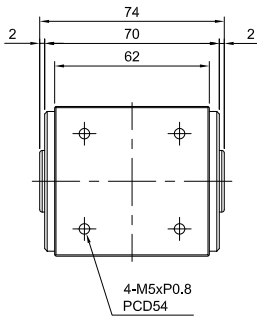
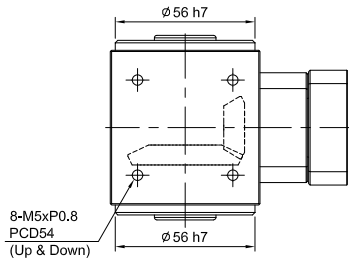
- Double Output Shaft

unit:mm	
Model Code	50
A1	8 · 11
A2	30 · 40 · 50
A3	M4 · M5
A4	46 · 63
A5	46 · 55
A6	M4 x P0.7
A7	26 · 30.5
Weight ±3% (kg)	1.05



MODEL : FT60

RATIO : 2.3.4.5 (單段 1-Stage)



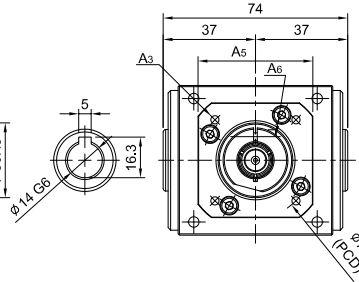
FT-FO

入力法蘭 - 出力中空軸

Input Flange

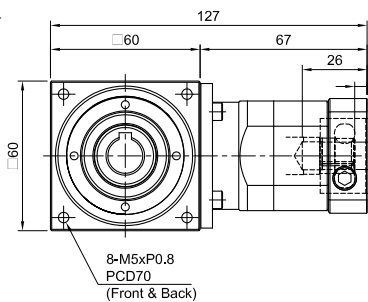
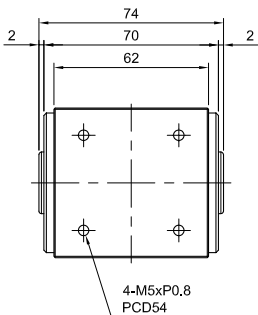
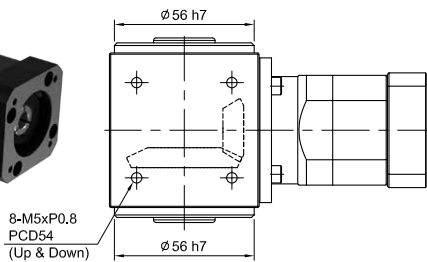
- Hollow Output Shaft

unit:mm	
Model	60
Code	60
A1	11
A2	30 · 40 · 50
A3	M3 · M4 · M5
A4	46 · 60 · 63
A5	46 · 55
A6	M4 x P0.7
Weight ±3% (kg)	1.1



MODEL : FT60

RATIO : 10.15.20.25.30.40.50 (雙段 2-Stage)



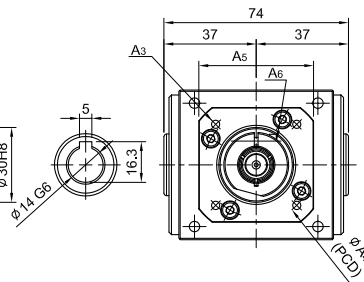
FT-RO

搭配行星減速機 - 出力中空軸

Fitted with Planetary Reducer

- Hollow Output Shaft

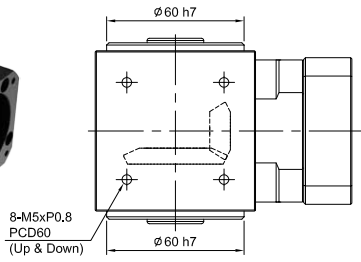
unit:mm	
Model	60
Code	60
A1	8 · 11
A2	30 · 40 · 50
A3	M3 · M4 · M5
A4	46 · 60 · 63
A5	46 · 55
A6	M4 x P0.7
Weight ±3% (kg)	1.4



MODEL : FT70

RATIO : 2.3.4.5 (單段 1-Stage)

FT



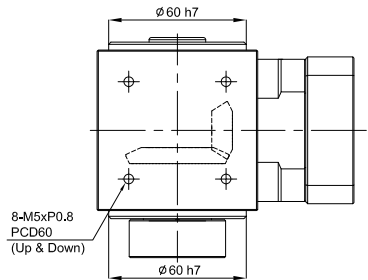
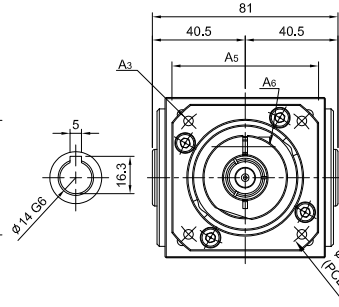
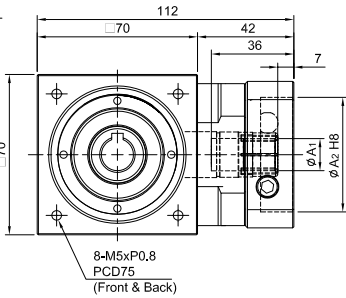
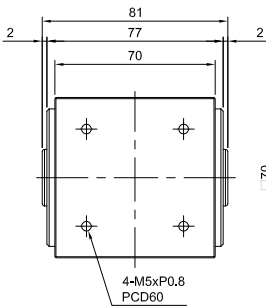
FT-FO

入力法蘭 - 出力中空軸

Input Flange

- Hollow Output Shaft

unit:mm	
Model Code	70
A1	14
A2	50 · 60 · 70
A3	M4 · M5 · M6
A4	70 · 75 · 90
A5	64 · 70 · 80
A6	M5 x P0.8
Weight $\pm 3\%$ (kg)	1.47

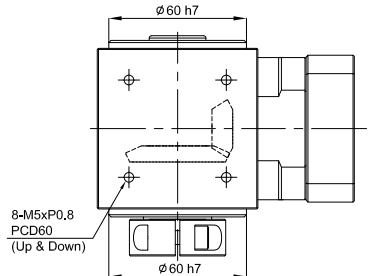
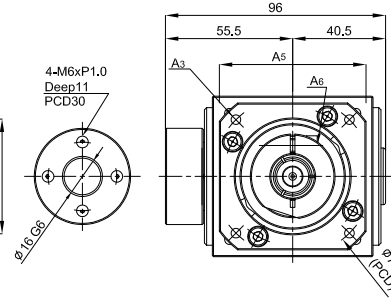
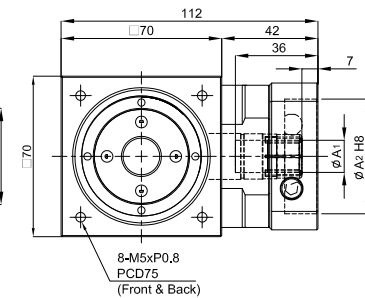
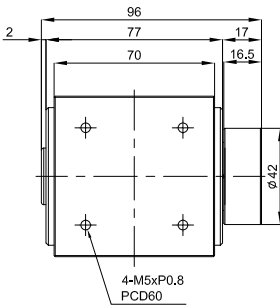


FT-FP

入力法蘭 - 出力盤式

Input Flange - Fixing Flange

unit:mm	
Model Code	70
A1	14
A2	50 · 60 · 70
A3	M4 · M5 · M6
A4	70 · 75 · 90
A5	64 · 70 · 80
A6	M5 x P0.8
Weight $\pm 3\%$ (kg)	1.75

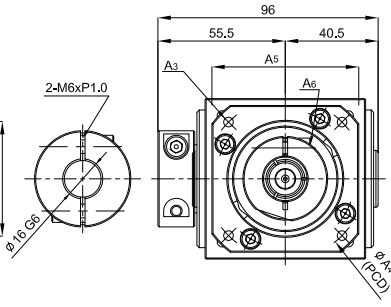
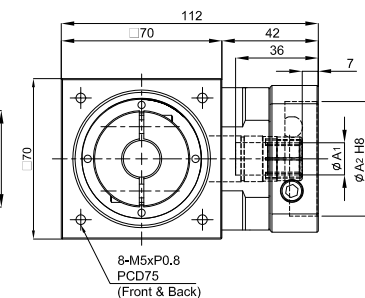
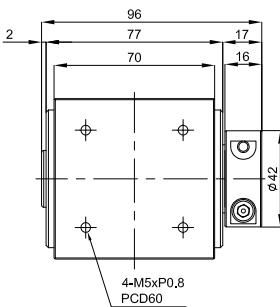


FT-FC

入力法蘭 - 出力迫緊環

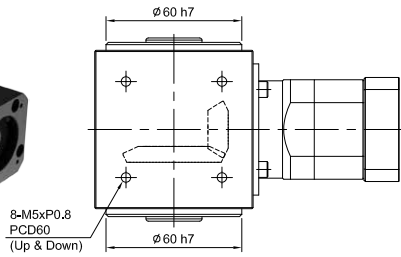
Input Flange - Set Collar

unit:mm	
Model Code	70
Weight $\pm 3\%$ (kg)	1.6



MODEL : FT70

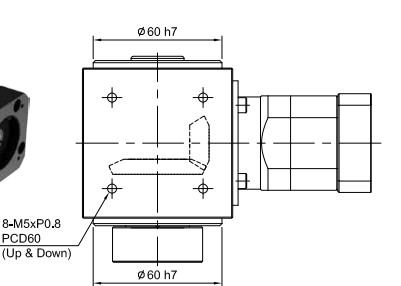
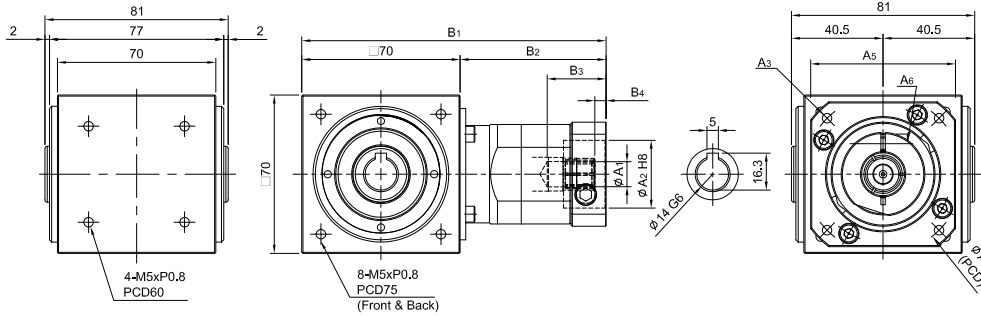
RATIO : 10.15.20.25.30.40.50 (雙段 2-Stage)



FT-RO

搭配行星減速機 - 出力中空軸
Fitted with Planetary Reducer
- Hollow Output Shaft

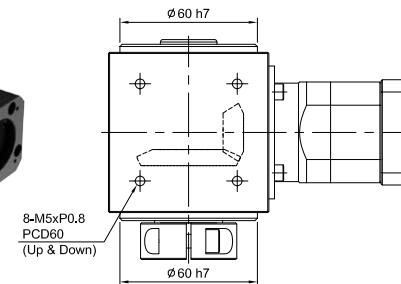
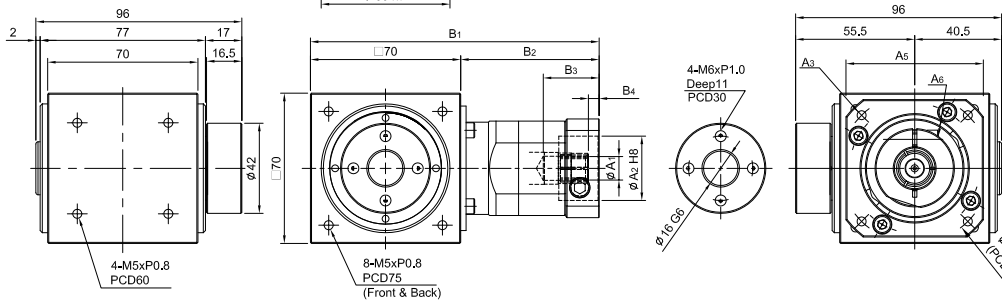
Model Code		70	
A1	8 · 11	14	
A2	30 · 40 · 50	50 · 60 · 70	
A3	M3 · M4 · M5	M4 · M5 · M6	
A4	46 · 60 · 63	70 · 75 · 90	
A5	46 · 55	64 · 70 · 80	
A6	M3 x P0.5	M5 x P0.8	
B1	135	146	
B2	65	76	
B3	26	33.5	
B4	5	6	
Weight $\pm 3\%$ (kg)	2.2		



FT-RP

搭配行星減速機 - 出力盤式
Fitted with Planetary Reducer
- Fixing Flange

Model Code		70	
A1	8 · 11	14	
A2	30 · 40 · 50	50 · 60 · 70	
A3	M3 · M4 · M5	M4 · M5 · M6	
A4	46 · 60 · 63	70 · 75 · 90	
A5	46 · 55	64 · 70 · 80	
A6	M3 x P0.5	M5 x P0.8	
B1	135	146	
B2	65	76	
B3	26	33.5	
B4	5	6	
Weight $\pm 3\%$ (kg)	2.5		



FT-RC

搭配行星減速機 - 出力迫緊環
Fitted with Planetary Reducer
- Set Collar

Model Code		70	
Weight $\pm 3\%$ (kg)	2.35		

