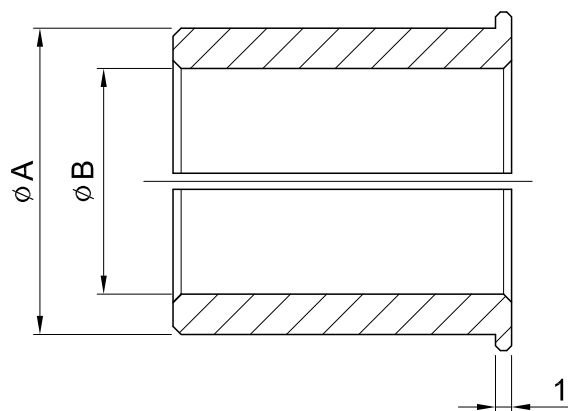


Bushing

軸套



軸套內徑為所使用伺服馬達的輸出軸軸徑。
 下表中沒有的情況下需要插入軸套，在您所使用的輸出軸軸徑的近似值中選擇大值。
 For motor shaft diameters not listed, gearboxes will be supplied with a bush to suit.
 The bore sizes may be supplied as a larger bore with a bush.

連接軸 孔徑 Shaft Bore øA 軸套 孔徑 Bushing Bore øB	8	11	14	19	22	24	28	32	35
6	●	●							
6.35	●								
8		●							
9		●							
10			●						
11			●						
12			●						
12.7			●						
14				●					
15.85				●					
16				●		●	●		
19					●	●	●		
22						●	●	●	
24							●		●
28								●	●
32									●

Selection Table of Motor for Reference

馬達選用參考表

單段 1-Stage

Model	ST	-	-	65	-	75	-	90	-	110	140	170	210	240	280			
	FT	-	60	-	70	-	-	-	-	-	-	-	-	-	-			
	HY	-	55	-	75	-	90	-	-	115	130	140	160	190、230	-	270		
	WE	-	30	-	40	50	-	-	60、70	-	-	-	-	-	-	-		
	GT	60	-	-	85、110	135	-	-	170、200	-	-	-	-	-	-	-		
Power	Input Bore	8	8	9	14	14	14	16	19	19	24	24	24	32	35	42	48	55
		8	9	11	14	14	19	19	22	24	24	28	32	35	38	48	55	60
100 W	●	●	●															
200 W			●															
400 W			●	●	●	●	●											
750 W					●	●	●	●	●	●								
1 kW						●	●	●	●	●	●							
1.5 kW							●	●	●	●	●							
2.2 kW											●							
3.75 kW											●	●	●					
5.5 kW												●	●					
7.5 kW													●					
11 kW														●				
15 kW														●	●			
22 kW														●	●	●		
30kW														●	●	●		

雙段 2-Stage

Model	ST	-	-	65、75	75	-	110	140	-	-	170	-	210	240	280			
	FT	-	60	70	-	-	-	-	-	-	-	-	-	-	-			
	HY	-	-	55	75	-	90	115	-	-	130	140	160	190	230、270			
	PW	-	30	40	-	50	-	-	60、70	-	-	-	-	-	-			
	GT	60	-	-	-	85、110	135	-	-	-	170	200	-	-	-			
Power	Input Bore	8	8	8	11	14	14	16	19	19	22	28	28	35	42	38		
		8	9	9	14	14	16	19	19	24	24	28	32	35	38	48	48	55
100 W	●	●	●															
200 W			●	●														
400 W			●	●	●	●	●											
750 W				●		●	●	●	●									
1 kW							●	●	●	●								
1.5 kW								●	●	●								
2.2 kW											●	●	●					
3.75 kW											●	●	●	●				
5.5 kW												●	●	●				●
7.5 kW													●	●				●
11 kW															●			●
15 kW															●	●		●
22 kW															●	●		●
30 kW															●	●		●