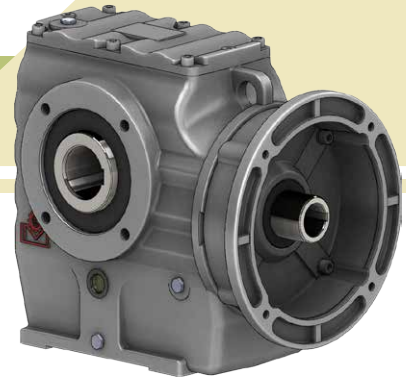
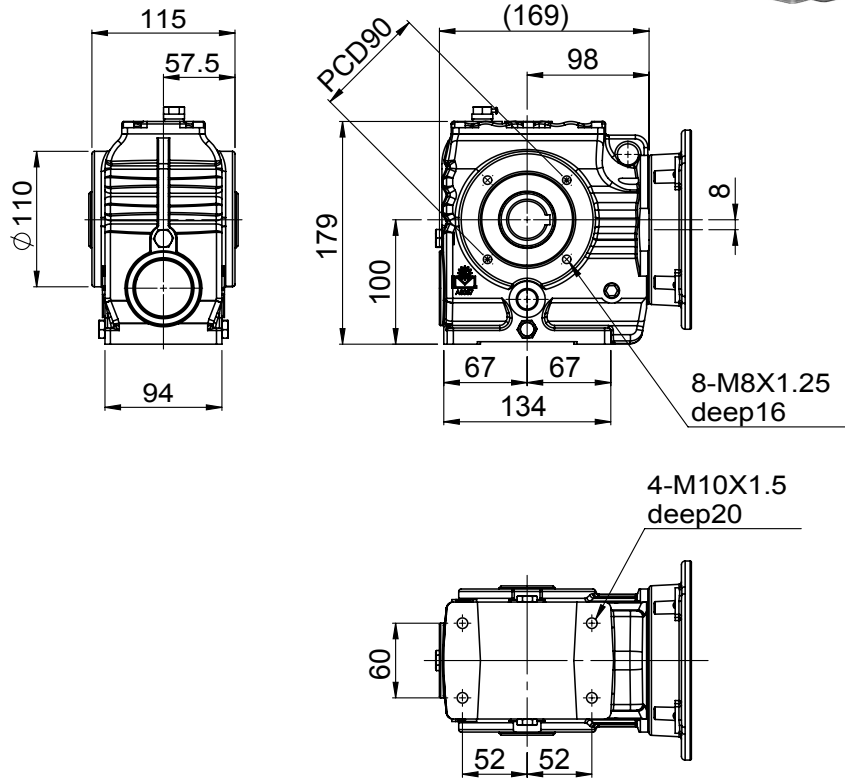


GEAR-WORM REDUCER SERIES

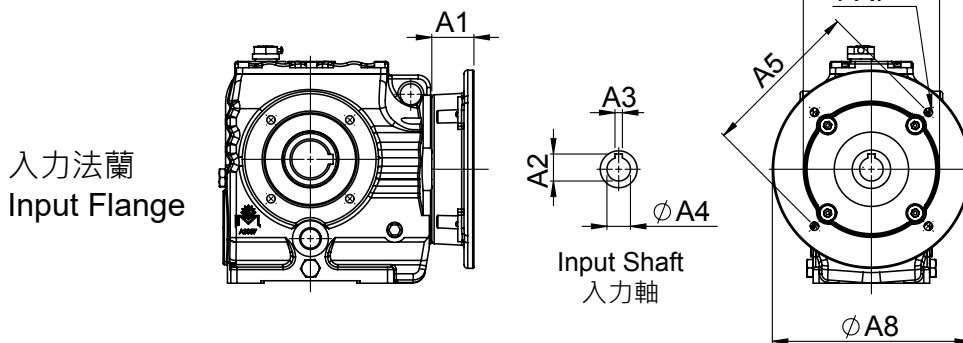
齒蝸輪減速機系列



MODEL : AS047



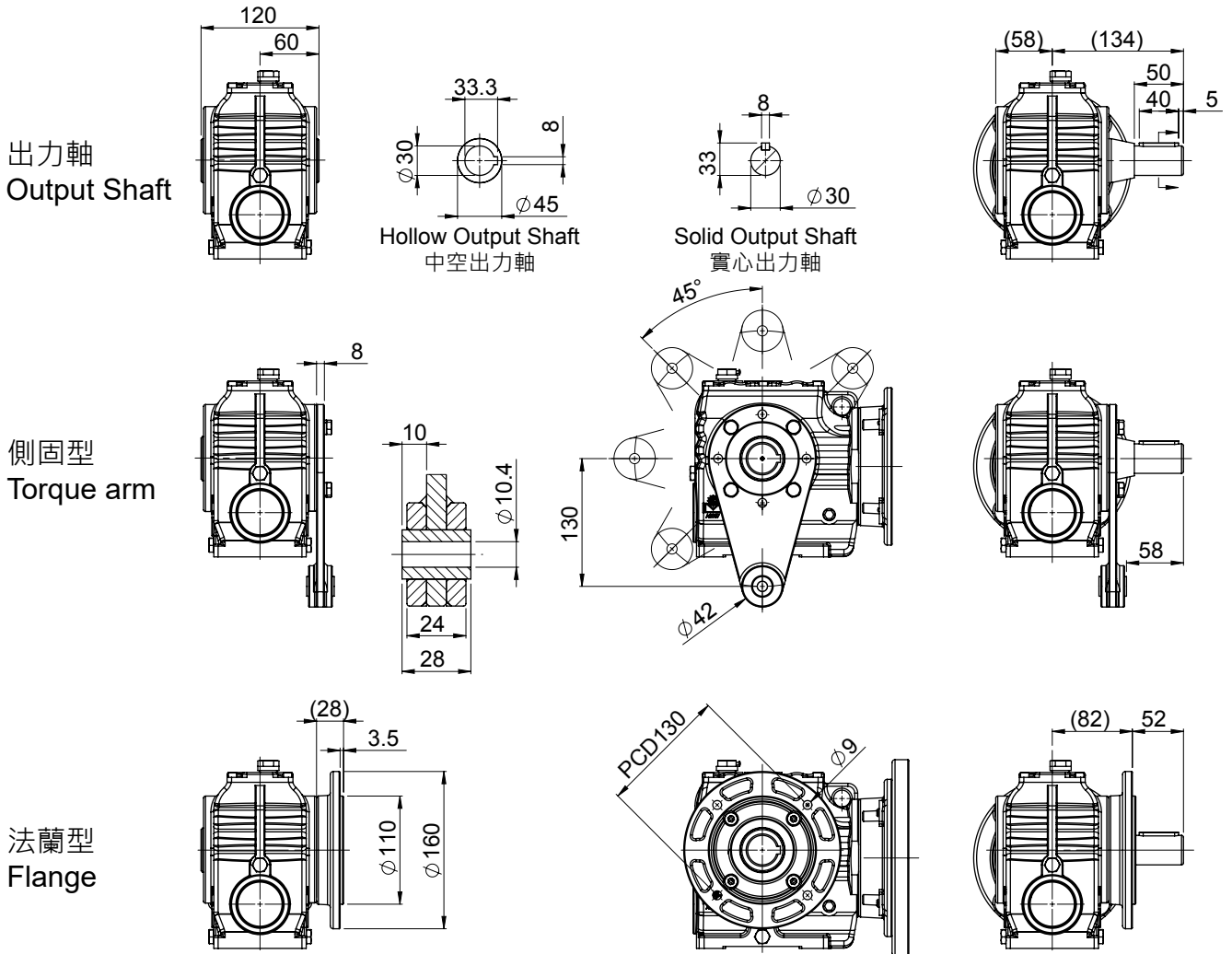
入力尺寸 Input



unit: mm

| Power | A1 | A2 | A3 | A4 | A5 | A6 | A7 | A8 |
|---------|----|------|----|----|-----|-----|---------|-----|
| 0.2 kW | 34 | 12.7 | 4 | 11 | 130 | 110 | M8x1.25 | 160 |
| 0.4 kW | 34 | 16.3 | 5 | 14 | 130 | 110 | M8x1.25 | 160 |
| 0.75 kW | 51 | 21.8 | 6 | 19 | 165 | 130 | M10x1.5 | 200 |

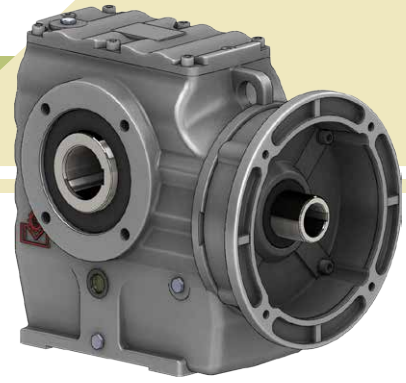
出力尺寸 Output



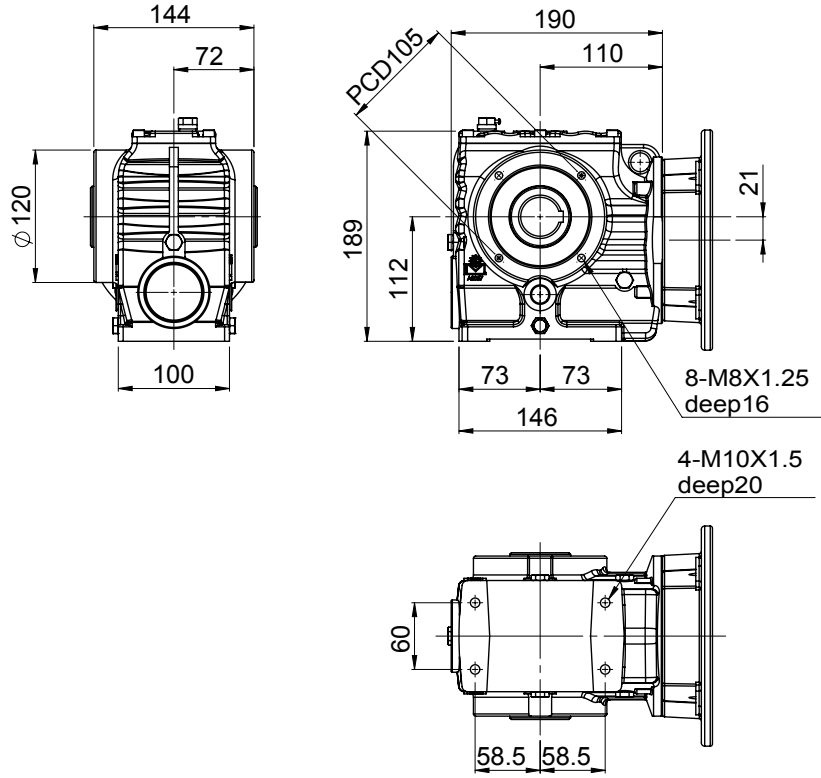
| Power 實際減速比 Actual Ratio | 0.2kW | | 0.4kW | | 0.75kW | |
|--------------------------------|--------|------|--------|------|--------|------|
| | OT(Nm) | SF | OT(Nm) | SF | OT(Nm) | SF |
| 20 | 16 | 6.87 | 34 | 3.23 | 70 | 1.57 |
| 30 | 25 | 5.05 | 52 | 2.43 | 105 | 1.20 |
| 40 | 33 | 4.14 | 69 | 1.98 | 140 | 0.97 |
| 45 | 35 | 3.35 | 73 | 1.60 | 149 | 0.78 |
| 60 | 47 | 2.71 | 98 | 1.30 | 198 | 0.64 |
| 80 | 62 | 2.13 | 127 | 1.04 | 258 | 0.51 |
| 90 | 60 | 2.00 | 123 | 0.97 | 250 | 0.48 |
| 100 | 62 | 1.50 | 129 | 0.72 | | |
| 120 | 80 | 1.62 | 164 | 0.79 | | |
| 140 (143.5) | 94 | 1.10 | 193 | 0.53 | | |
| 160 | 103 | 1.20 | 213 | 0.58 | | |
| 180 | 107 | 0.97 | | | | |
| 200 | 125 | 0.88 | | | | |
| 240 | 143 | 0.78 | | | | |

GEAR-WORM REDUCER SERIES

齒蝸輪減速機系列

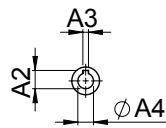
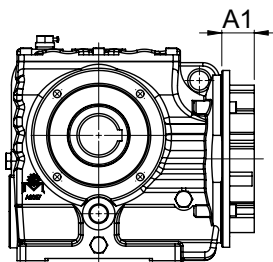


MODEL : AS057

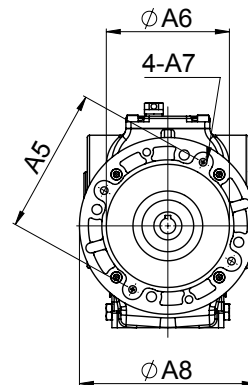


入力尺寸 Input

入力法蘭
Input Flange



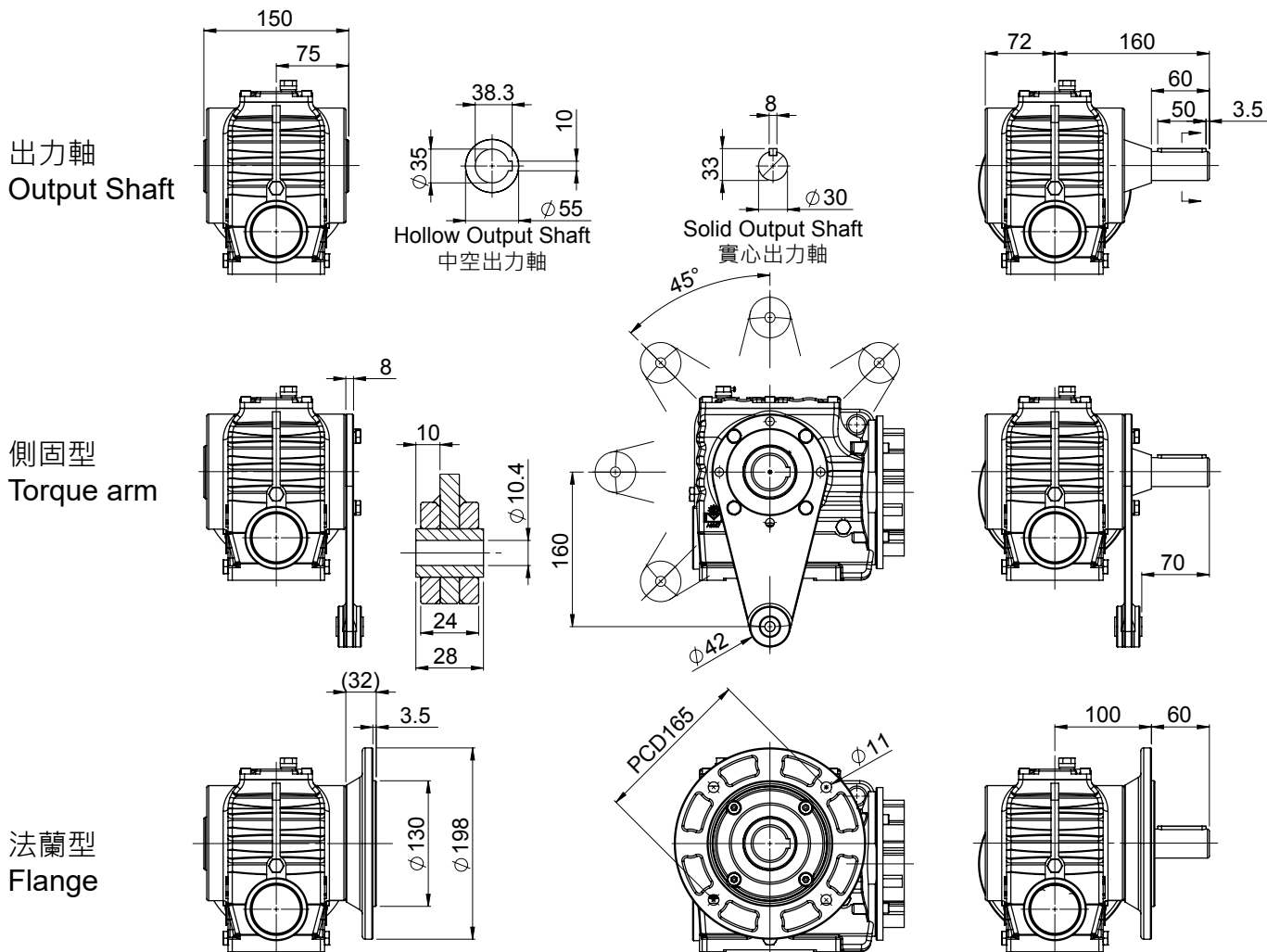
Input Shaft
入力軸



unit: mm

| Power | A1 | A2 | A3 | A4 | A5 | A6 | A7 | A8 |
|---------|----|------|----|----|-----|-----|---------|-----|
| 0.4 kW | 29 | 16.3 | 5 | 14 | 130 | 110 | M8x1.25 | 160 |
| 0.75 kW | 45 | 21.8 | 6 | 19 | 165 | 130 | M10x1.5 | 200 |
| 1.5 kW | 45 | 27.3 | 8 | 24 | 165 | 130 | M10x1.5 | 200 |

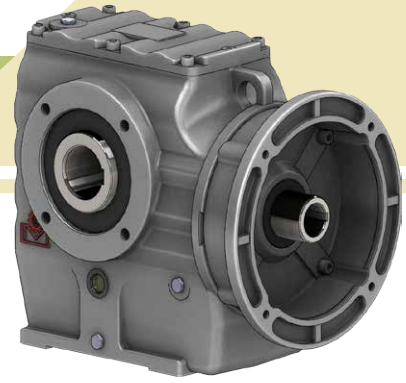
出力尺寸 Output



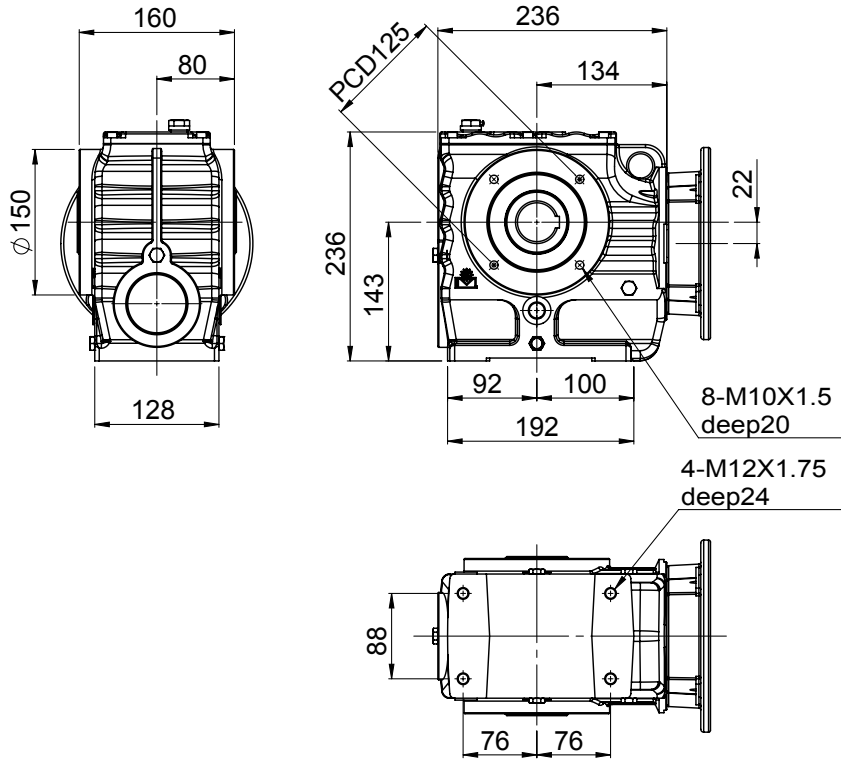
| Power 實際減速比 Actual Ratio | 0.4kW | | 0.75kW | | 1.5kW | |
|--------------------------------|--------|------|--------|------|--------|------|
| | OT(Nm) | SF | OT(Nm) | SF | OT(Nm) | SF |
| 20 | 35 | 5.61 | 72 | 2.72 | 144 | 1.36 |
| 30 | 53 | 4.28 | 108 | 2.10 | 216 | 1.05 |
| 40 | 71 | 3.42 | 144 | 1.68 | 288 | 0.84 |
| 45 | 76 | 2.90 | 154 | 1.43 | 309 | 0.71 |
| 60 | 101 | 2.38 | 206 | 1.17 | 412 | 0.58 |
| 80 | 132 | 1.80 | 268 | 0.88 | | |
| 90 | 132 | 1.71 | 268 | 0.84 | | |
| 100 | 135 | 1.33 | 274 | 0.65 | | |
| 120 | 176 | 1.39 | 358 | 0.68 | | |
| 140 (143.5) | 202 | 0.99 | 411 | 0.48 | | |
| 160 | 226 | 1.04 | 458 | 0.51 | | |
| 180 | 232 | 0.80 | | | | |
| 200 | 270 | 0.79 | | | | |
| 240 | 310 | 0.64 | | | | |

GEAR-WORM REDUCER SERIES

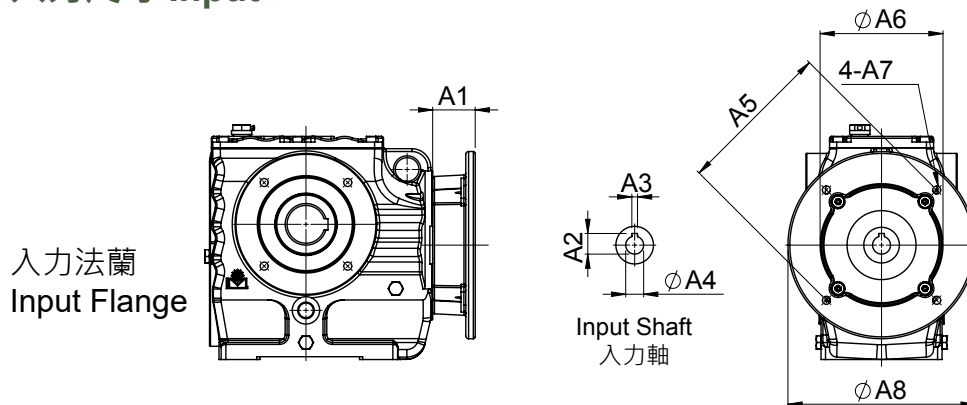
齒蝸輪減速機系列



MODEL : AS067



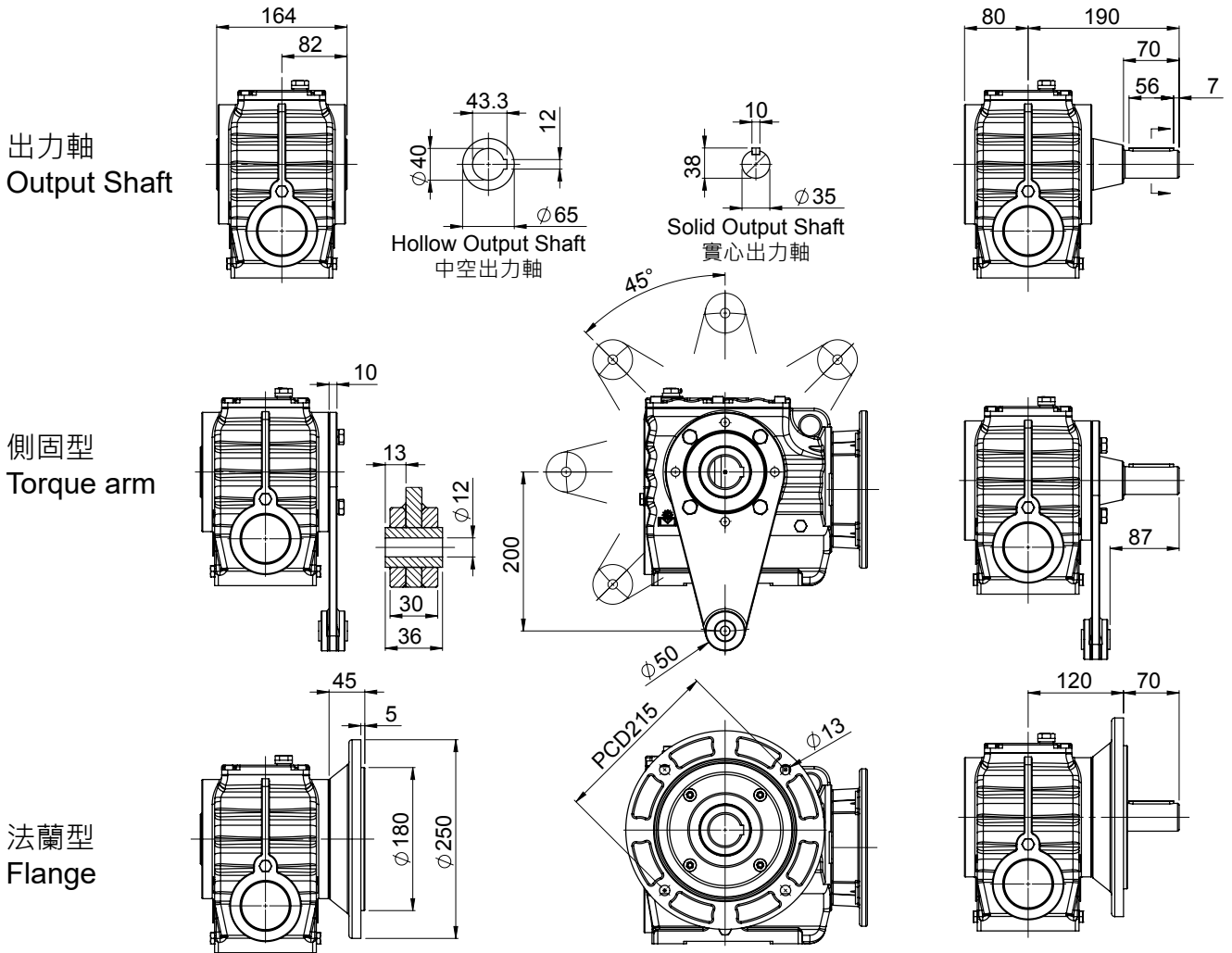
入力尺寸 Input



unit: mm

| Power | A1 | A2 | A3 | A4 | A5 | A6 | A7 | A8 |
|------------------|----|------|----|----|-----|-----|----------|-----|
| 0.75 kW | 45 | 21.8 | 6 | 19 | 165 | 130 | M10x1.5 | 200 |
| 1.5 kW | 45 | 27.3 | 8 | 24 | 165 | 130 | M10x1.5 | 200 |
| 2.2 kW 3.7 kW | 59 | 31.3 | 8 | 28 | 215 | 180 | M12x1.75 | 250 |

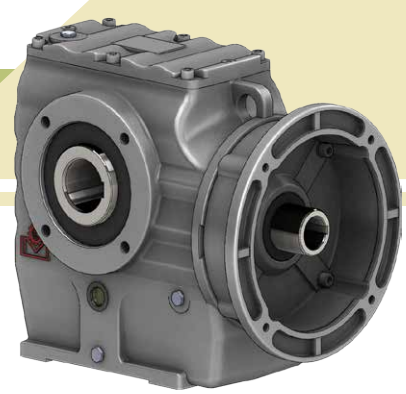
出力尺寸 Output



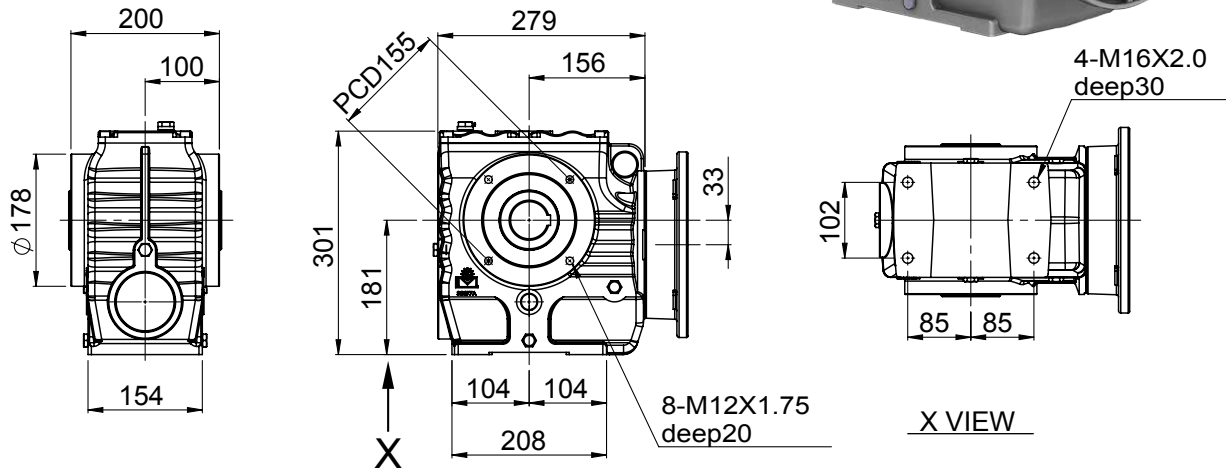
| Power | 0.75kW | | 1.5kW | | 2.2kW | | 3.7kW | |
|-----------------------|--------|------|--------|------|--------|------|--------|------|
| 實際減速比 Actual Ratio | OT(Nm) | SF | OT(Nm) | SF | OT(Nm) | SF | OT(Nm) | SF |
| 20 | 72 | 5.16 | 145 | 2.56 | 213 | 1.74 | 359 | 1.03 |
| 30 | 109 | 3.96 | 218 | 1.98 | 320 | 1.35 | 539 | 0.8 |
| 40 | 145 | 3.25 | 291 | 1.62 | 427 | 1.1 | 718 | 0.65 |
| 45 | 154 | 2.62 | 309 | 1.3 | 453 | 0.89 | 763 | 0.53 |
| 60 | 206 | 2.15 | 412 | 1.07 | 605 | 0.73 | | |
| 80 | 258 | 1.46 | 517 | 0.72 | 758 | 0.49 | | |
| 90 | 268 | 1.49 | 537 | 0.74 | 788 | 0.5 | | |
| 100 | 224 | 1.42 | 449 | 0.71 | | | | |
| 120 | 358 | 1.22 | 717 | 0.6 | | | | |
| 140 (141) | 336 | 1.07 | 673 | 0.53 | | | | |
| 160 | 425 | 0.88 | | | | | | |
| 180 | 434 | 0.66 | | | | | | |
| 200 | 449 | 0.56 | | | | | | |
| 240 | 579 | 0.53 | | | | | | |

GEAR-WORM REDUCER SERIES

齒蝸輪減速機系列

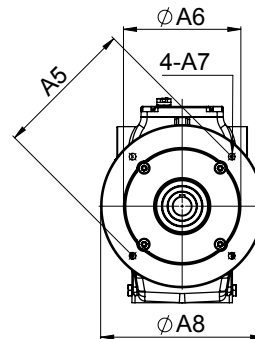
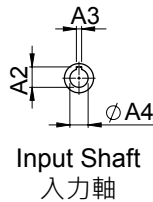
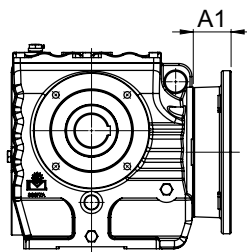


MODEL : AS077

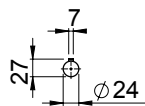
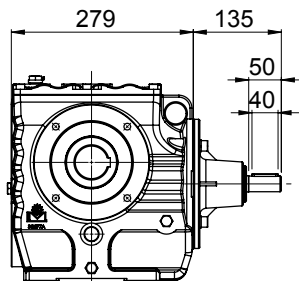


入力尺寸 Input

入力法蘭
Input Flange



入力軸
Input Shaft

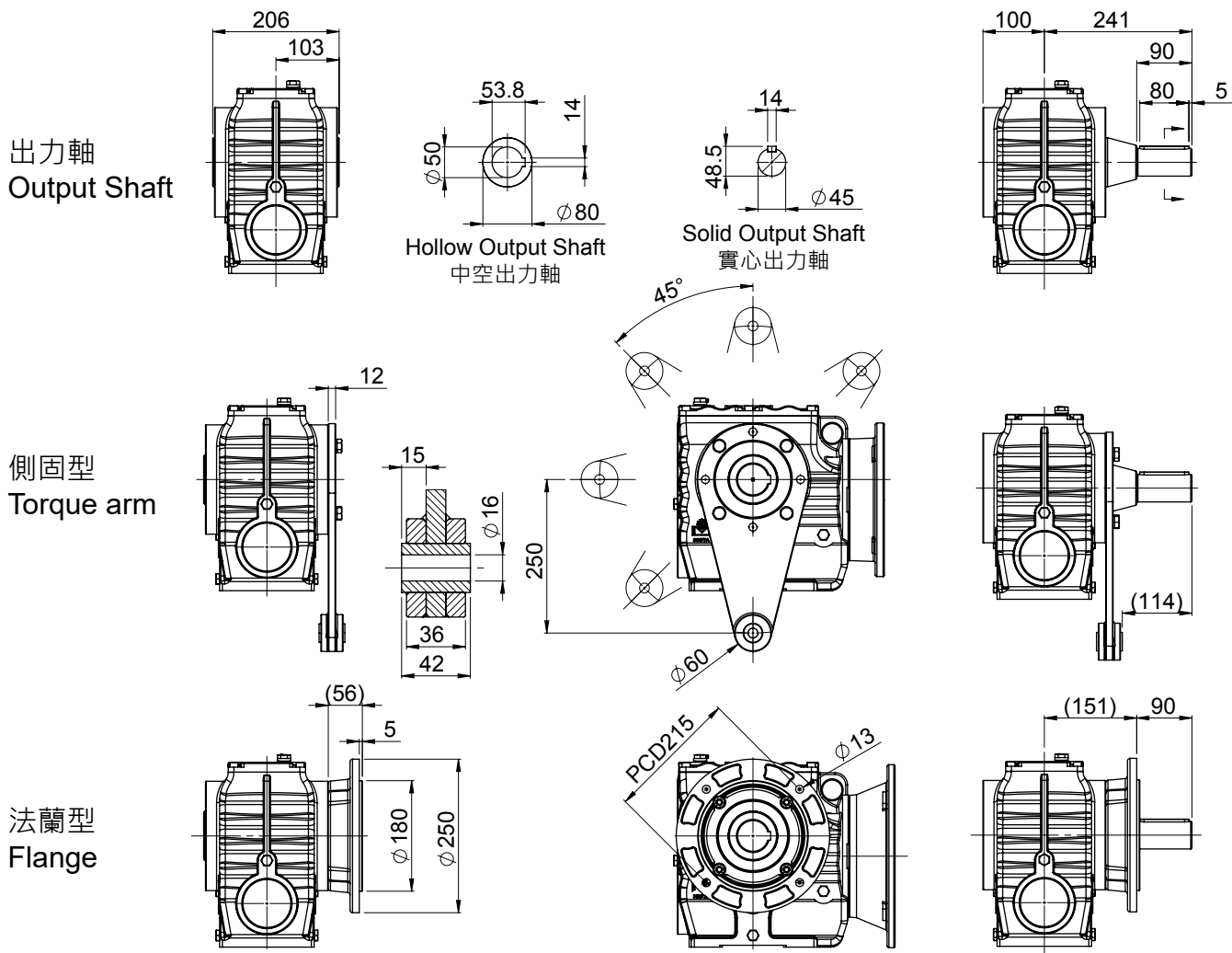


入力軸式僅生產 1.5kW、2.2kW、3.7kW。 The input shaft only produces 1.5kW, 2.2kW, 3.7kW.

unit: mm

| Power | A1 | A2 | A3 | A4 | A5 | A6 | A7 | A8 |
|------------------|----|------|----|----|-----|-----|----------|-----|
| 1.5 kW | 45 | 27.3 | 8 | 24 | 165 | 130 | M10x1.5 | 200 |
| 2.2 kW 3.7 kW | 58 | 31.3 | 8 | 28 | 215 | 180 | M12x1.75 | 250 |
| 5.5 kW | 76 | 41.3 | 10 | 38 | 265 | 230 | M12x1.75 | 300 |

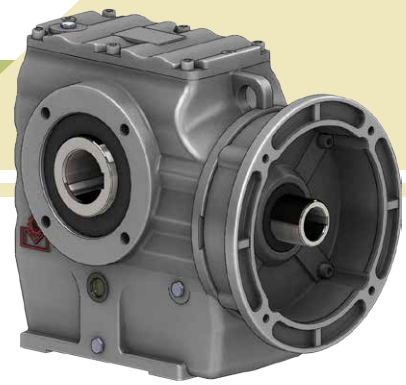
出力尺寸 Output



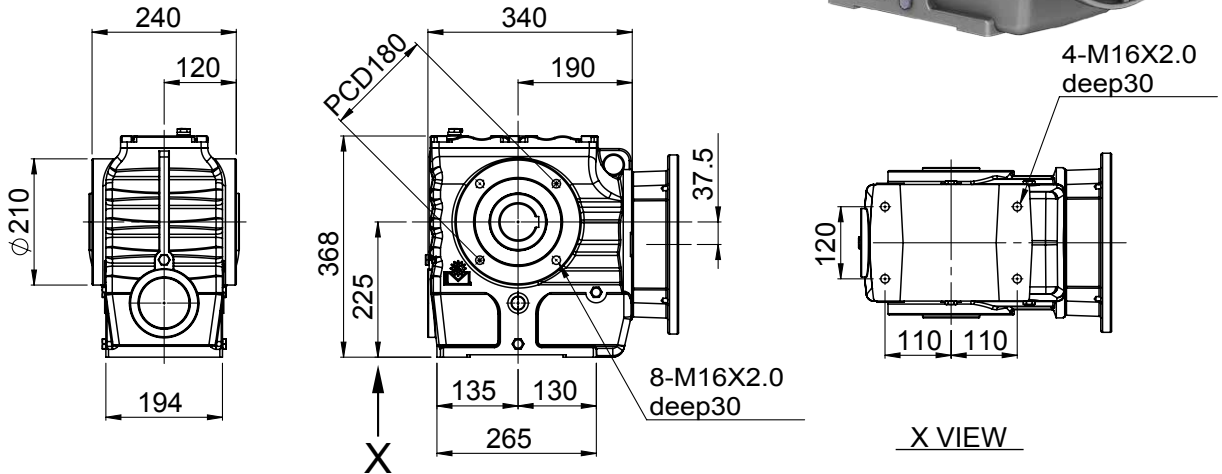
| Power | 1.5kW | | 2.2kW | | 3.7kW | | 5.5kW | |
|-----------------------|--------|------|--------|------|--------|------|--------|------|
| 實際減速比 Actual Ratio | OT(Nm) | SF | OT(Nm) | SF | OT(Nm) | SF | OT(Nm) | SF |
| 20 | 145 | 4.76 | 213 | 3.24 | 359 | 1.92 | 534 | 1.29 |
| 30 | 211 | 3.04 | 309 | 2.08 | 521 | 1.23 | 774 | 0.83 |
| 40 | 291 | 3.01 | 427 | 2.05 | 718 | 1.22 | 996 | 0.61 |
| 45 | 316 | 2.31 | 464 | 1.57 | 781 | 0.93 | 1161 | 0.62 |
| 60 | 422 | 1.91 | 619 | 1.3 | 1042 | 0.77 | 1350 | 0.51 |
| 80 | 543 | 1.42 | 797 | 0.97 | 1340 | 0.57 | | |
| 90 | 552 | 1.42 | 810 | 0.97 | 1363 | 0.57 | | |
| 100 | 548 | 1.14 | 804 | 0.78 | | | | |
| 120 | 736 | 1.17 | 1080 | 0.8 | | | | |
| 140 (141) | 822 | 0.85 | 1206 | 0.58 | | | | |
| 160 | 943 | 0.81 | 1383 | 0.55 | | | | |
| 180 | 1002 | 0.64 | | | | | | |
| 200 | 1097 | 0.69 | | | | | | |
| 240 | 1336 | 0.51 | | | | | | |

GEAR-WORM REDUCER SERIES

齒蝸輪減速機系列

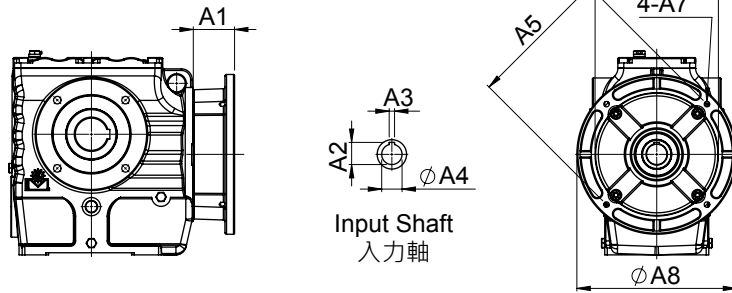


MODEL : AS087

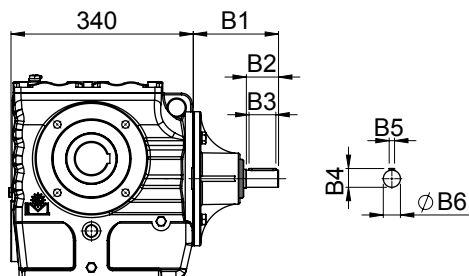


入力尺寸 Input

入力法蘭
Input Flange



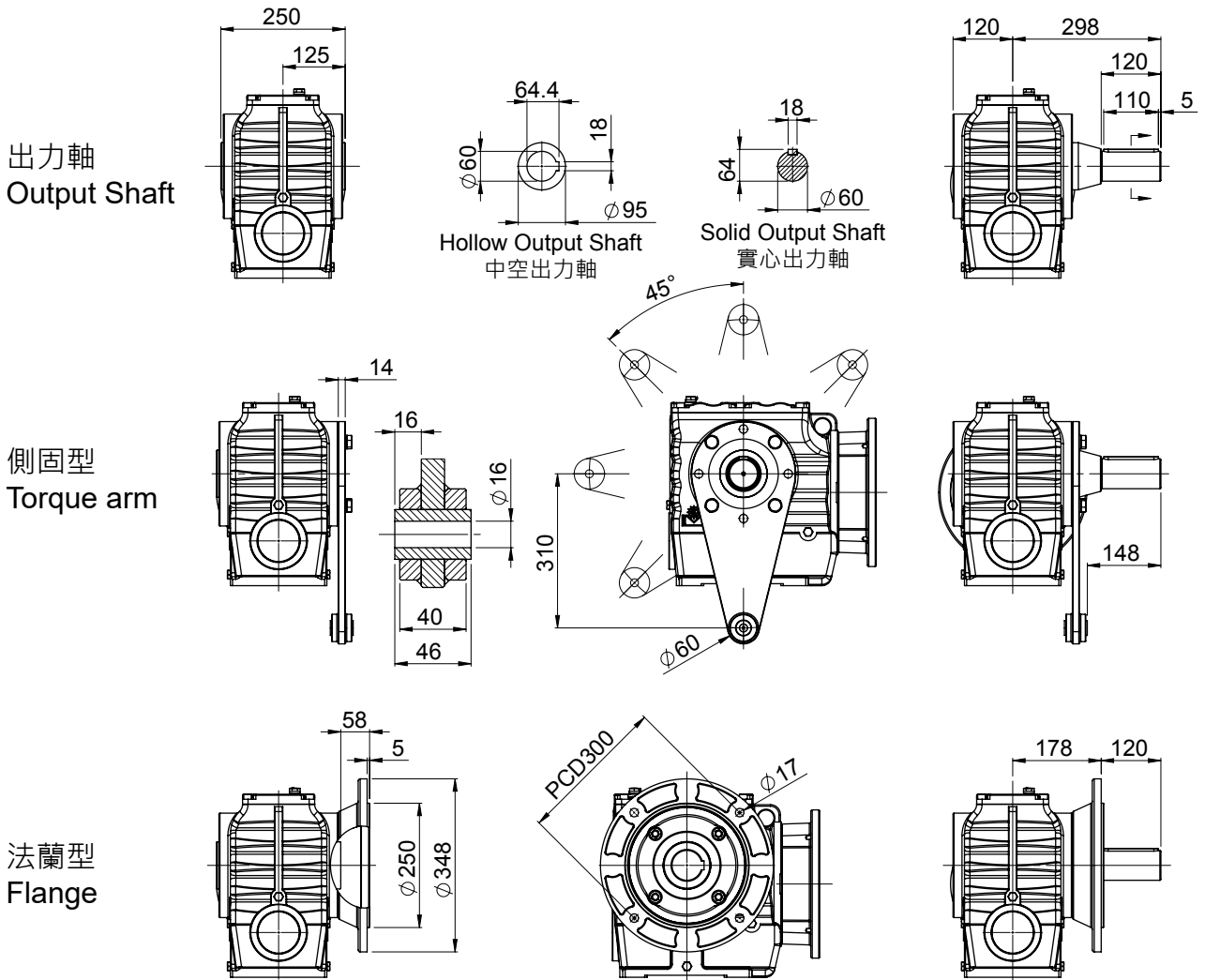
入力軸
Input Shaft



unit: mm

| Power | A1 | A2 | A3 | A4 | A5 | A6 | A7 | A8 | B1 | B2 | B3 | B4 | B5 | B6 |
|------------------|-----|------|----|----|-----|-----|----------|-----|-----|----|----|----|----|-----|
| 2.2 kW 3.7 kW | 57 | 31.3 | 8 | 28 | 215 | 180 | M12x1.75 | 250 | 159 | 60 | 50 | 35 | 10 | Ø32 |
| 5.5 kW 7.5 kW | 77 | 41.3 | 10 | 38 | 265 | 230 | M12x1.75 | 300 | 164 | 65 | 55 | 41 | 10 | Ø38 |
| 11 kW | 112 | 45.3 | 12 | 42 | 300 | 250 | M16x2.0 | 350 | 164 | 65 | 55 | 41 | 10 | Ø38 |

出力尺寸 Output



| Power | 2.2kW | | 3.7kW | | 5.5kW | | 7.5kW | | 11kW | |
|-----------------------|--------|------|--------|------|--------|------|--------|------|--------|------|
| 實際減速比 Actual Ratio | OT(Nm) | SF | OT(Nm) | SF | OT(Nm) | SF | OT(Nm) | SF | OT(Nm) | SF |
| 20 | 208 | 5.34 | 351 | 3.17 | 522 | 2.13 | 712 | 1.56 | 1044 | 1.06 |
| 30 | 313 | 4.09 | 527 | 2.43 | 783 | 1.63 | 1068 | 1.2 | 1567 | 0.81 |
| 40 | 417 | 3.38 | 702 | 2 | 1044 | 1.35 | 1424 | 0.99 | 2089 | 0.67 |
| 45 | 480 | 2.73 | 808 | 1.62 | 1202 | 1.09 | 1639 | 0.79 | 2404 | 0.54 |
| 60 | 641 | 2.26 | 1078 | 1.34 | 1603 | 0.9 | 2186 | 0.66 | | |
| 80 | 835 | 1.75 | 1405 | 1.04 | 2089 | 0.7 | 2849 | 0.51 | | |
| 90 | 864 | 1.6 | 1454 | 0.95 | 2161 | 0.64 | | | | |
| 100 | 840 | 1.21 | 1413 | 0.72 | 2101 | 0.48 | | | | |
| 120 | 1152 | 1.32 | 1938 | 0.78 | 2881 | 0.52 | | | | |
| 140 (141) | 1260 | 0.91 | 2120 | 0.54 | | | | | | |
| 160 | 1479 | 1.01 | 2488 | 0.6 | | | | | | |
| 180 | 1534 | 0.74 | | | | | | | | |
| 200 | 1681 | 0.74 | | | | | | | | |
| 240 | 2046 | 0.6 | | | | | | | | |